

QUOTE

"Thought is the blossom;
language the bud; action
the fruit behind it."
—Ralph Waldo Emerson.

The Chelsea Standard

25¢
per copy

ONE HUNDRED-ELEVENTH YEAR—No. 46

CHELSEA, MICHIGAN, TUESDAY, APRIL 21, 1981

16 Pages This Week



CATS DONATION: Chelsea Lioness Club member Judy Radant, presents CATS president Reuben Lesser, Jr., with a check for \$150 to help finance the operation costs of the handicapped elderly transit system. The bus, driven by Marvin Schiller, right, continues to run five days per week, though financial troubles have raised questions

about the future of the services provided. Operating entirely from grants and personal donations, the CATS bus system has offered the elderly and/or handicapped residents of the Chelsea community with transportation services since the mid-1970's.

Nancy Heller Is State Finalist In Miss Teen-Ager Pageant



NANCY HELLER

Blood Pressure Clinic Offered By Hospital Auxiliary

A blood pressure clinic, sponsored by the Chelsea Community Hospital Auxiliary will be offered to area residents Friday, May 1 at Chelsea State Bank. At the same time registered nurses and qualified personnel will present a demonstration of the importance of CPR in saving lives. This clinic is provided as a public service, marking the first day of Hypertension Month.

Eighteen-year-old Nancy Heller, daughter of Robert and Else Heller, 1610 Guenther Rd., has been selected as a state finalist in the 1981 Michigan National Teen-Ager pageant to be held at the Plymouth Hilton Inn, Plymouth, on May 1-3.

The Michigan National Teen-Ager pageant is the official state finals to the Miss National Teen-Ager pageant which is to be held in August. The winner of the Michigan pageant will receive a \$500 cash scholarship, a full Bar-bizon modeling scholarship and an all-expense paid trip to the national finals to compete with the 51 other winners representing every state, the District of Columbia and Puerto Rico for the title of Miss National Teenager for 1982.

Eckerd College in St. Petersburg, Fla. will award a \$4,000 tuition scholarship to the state citizenship award winner (\$1,000 a year for four years) and a \$20,000 tuition scholarship to the national citizenship award winner.

Contestants will be judged on scholastic achievement, leadership, poise, personality and appearance. There is no swimsuit or talent competition. Each contestant will participate in the National Teen-Ager Volunteer Service Program as well as recite a 100-word speech on the pageant

theme, "What's Right About America."

Nancy Heller is sponsored by Heller Electric and Supplies, Chelsea Pharmacy, Inc. and Chelsea State Bank. Her hobbies include singing, sewing, jogging and raising animals.

The reigning Michigan National Teen-Ager is Colleen Wine of Warren while the reigning Miss National Teen-Ager is Danelle Black of Hastings, Neb.

Math Courses Offered By WCC At Chelsea High

Washtenaw Community College in co-operation with the Chelsea Community Education Department will offer a vast assortment of laboratory mathematics courses ranging from 039 Basic Mathematics to 179 Precalculus.

Each of these three credit classes will meet on Wednesday evenings between the hours of 6 and 9:15 p.m. for a total of 14 weeks during the Spring/Summer term.

Registration for the WCC math courses available will be held Tuesday, April 28 at 7:30 p.m. in the Chelsea High school cafeteria.

Community Choir Plans Free Concert

The Chelsea Community Choir, organized through the Adult Education program of the Chelsea Public Schools, will be giving a spring concert Monday, April 27 in the Beach Middle school cafeteria at 8 p.m.

The group, directed by June Warren, has been rehearsing once per week for about eight weeks. A wide variety of music is sung, focusing on light show tunes, spirituals and generally, "music for fun."

A male quartet will take center stage as will Denny Mull, tenor, and a women's group. Membership in the chorus includes persons with many vocations and avocations including electrician, nurse, housewife, feed consultant, editorial assistant and cashier. All enjoy getting together to make music.

The community is cordially invited to attend this concert free of charge for a brief program of relaxing entertainment. The choir is accompanied by Mary Anne Skinner.

Registration Slated for Summer Ball

Summer youth baseball and girls softball registration will be held at the Chelsea High school cafeteria, Saturday, April 25.

Between the hours of 10 a.m. and 12-noon, boys will have the opportunity to register for T-Ball for 6 and 7-year-olds or Farm League for 8 and 9-year-olds. Cost for participation in the program is \$8.

Little League (10 and 11-year-olds) and Pony League (12 and 13-year-olds) registration will also be held at this time. The charge for either of these two programs is \$10.

Boys Babe Ruth League registration, offered to boys ages 14 and 15, as well as Boys Connie Mack registration for 16 through 18-year-olds will also be held with the program cost being \$12 and \$15, respectively.

From noon until 2 p.m., 8, 9 and 10-year-old girls will have the opportunity to register for participation in the Midget League Slo-Pitch. The cost for this activity is \$8.

A \$10 fee accompanies registration for the Junior Miss-Fast Pitch program, geared for 11, 12 and 13-year-old girls while Senior Miss registration for 14 through 16-year-old participants will take place at a charge of \$12.

Persons registering for the summer youth baseball or girls softball programs must reach the expressed age prior to Aug. 1, 1981 in order to participate in that particular league.

All summer baseball participants must be accompanied by a parent on registration day and must present a birth certificate or other documentation of (Continued on page eight)

Two Requests Will Be On School's June Ballot For Operating Millage

Chelsea Board of Education, at its regular meeting on Monday, April 13, voted to place two proposals on the ballot for the annual election to be held Monday, June 8.

In the first proposal, the Chelsea Board of Education will ask voter approval for renewal of operating millage of 20.5 mills for one year. All the voted operating millage expires June 30, 1981. The 20.5 mills, plus the 11.22 county-allocated plus 0.5 maintenance millage, comprises the total operating millage for the 1981-82 school year.

The second proposal is that the Chelsea Board of Education will seek voter approval for 0.8 net increase in voted millage. The second proposal will be needed if the State property tax reduction proposal (Proposal A) is passed by the electorate on a special designated election to be held May 19. The passage of Proposal A will cause the Chelsea School District to lose \$424,000 in operating funds. Although the net voted millage increase is 0.8, 2.6 mills must appear on the ballot. Proposal A guarantees that the State of Michigan will pay 50 percent of any increased operating millage that school district voters approve. The State, therefore, will pay, in dollars, an equivalent of 1.3 mills, which is half of the 2.6 request that appears in the ballot language.

The Chelsea Board of Education pledges to reduce the debt retirement levy from 4.0 to 3.5 mills, a reduction of 0.5 mills. This makes the net voted increased levy 0.8 mills. In the event that State Proposal A is defeated, the Chelsea Board of Education will not levy the 2.6 mill increase. The Board will, however, reduce the debt retirement millage 0.5 mills. The Chelsea Board of Education voted to adopt the ballot

language rather than wait for the outcome of the May 19 election. If the Board had decided to wait, a special election would have to be held; the earliest the election could be held would be approximately Aug. 1. This would disrupt the planning for the 1981-82 school year. The planning involves proper staffing and purchasing of equipment and supplies prior to the opening of school.

Beach School Disciplinary Code Adopted

Chelsea's Beach Middle school put into effect a new, updated disciplinary code last week following dissatisfaction and concern expressed by parents, staff and students over the original code for non-school like conduct.

In order to establish a timely disciplinary code, the Beach teaching staff surveyed area schools for information regarding other disciplinary codes. Their findings and suggestions were brought before the student government and parents. Input was received from each concerned group and the final draft received unanimous support from the interested parties.

This code was presented to Superintendent Van Meer and the Board of Education and was approved at their meeting held Monday evening, April 13.

A total of 27 disciplinary violations were outlined with prescribed penalties applicable to each. The first 11 offenses—fighting, inappropriate display of affection, profanity and vulgar language, insubordination, obscenity, possession of lighters, matches etc., defacing property belonging to another or to the school, inappropriate behavior at assemblies, pep rallies or other public assemblies, unauthorized leaving of the building, throwing of objects that are disruptive and potentially dangerous, abuse of hall pass privileges—receive probationary steps to include discussion of the problem with the student, warning and/or probation.

The next 11 actions of non-school like conduct are deemed more serious and require a more serious penalty. These violations include theft, drugs, alcoholic beverages, etc., extortion, assault, forgery, intimidation, smoking and/or possession of

tobacco, truancy, vandalism, causing a false fire alarm, or other criminal acts. Committing any of the above violations would result in a temporary suspension from Beach school for one to five days.

An indefinite suspension from school is likely to result if a student commits any of the following five violations—arson, possession or using weapons or explosives, striking or threatening school personnel, bomb threat, loitering by suspended student. These offenses are seen as most severe and can result in suspension for 6-10 days or possibly, expulsion and pending Board hearing.

According to Beach Middle school principal Al Conklin, this code has put an end to the sketchy disciplinary code employed originally. It specifies violations and provides the student with a clear picture of the consequences should he or she commit any violation.

Aquatic Club Offers Swim Stroke Clinic

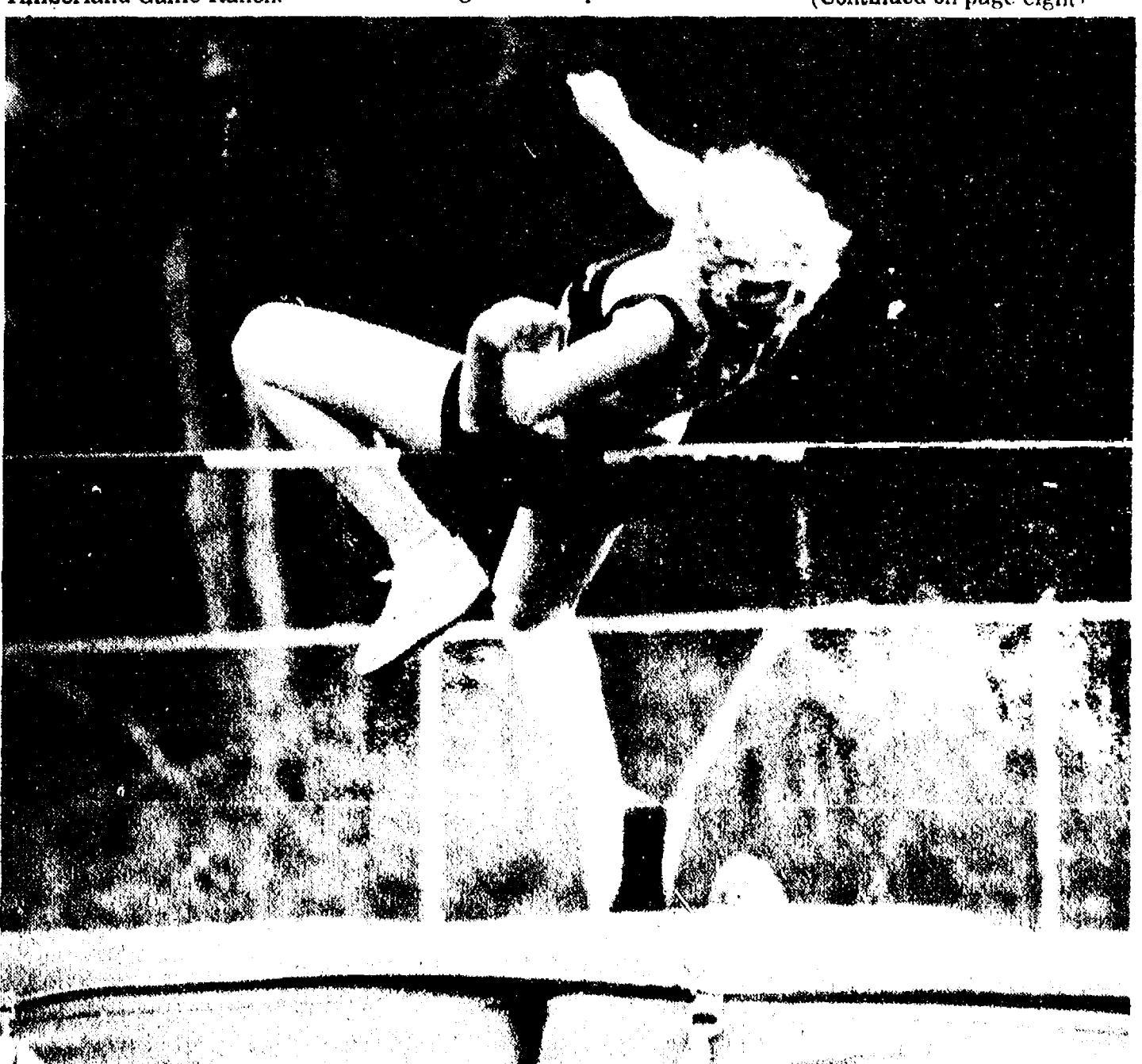
In co-operation with the Chelsea Recreation Department, the Chelsea Aquatic Club will present a Stroke Clinic—Swim Club beginning Monday, April 27.

This is a low level competitive organization that provides advanced instruction for those persons meeting minimum requirements of being 10-years-old or younger and capable of swimming one width (40 feet) of the pool, any stroke or, if the participant is 11-years-old or older, he or she must be able to swim 50 yards nonstop, any stroke. Participants (Continued on page eight)



EASTER EGG HUNTERS: Kevin Bollinger, 2, the son of Marcie and Richard Bollinger, is assisted by Margaret Merkel while Christina Merkel, 5, poses with her mother, Judy, during a break in the scrambling and seeking of multi-

colored Easter eggs Saturday, April 18, on the Chelsea High school athletic field. Hundreds of children darted across the grounds, picking up as many of the 120 dozen colored eggs as they could locate during the annual Jaycee-sponsored event.



CAROL WARREN twists and turns in hopes of keeping the bar intact as she participates in the high jump event during the Chelsea girls track

team opener Thursday afternoon, April 16. In a close, exciting meet, the Chelsea thinclads posted a 64-59 victory over league rival Saline.

Established 1871 **The Chelsea Standard** Telephone (313) 475-1371
Walter P. and Helen May Leonard, Publishers
USPS No. 101-720



Published every Tuesday at 300 N. Main Street, Chelsea Mich. 48118, and second class postage paid at Chelsea, Mich. under the Act of March 3, 1879. Postmaster: Send address changes to The Chelsea Standard 300 N. Main St., Chelsea, Mich. 48118.

Subscription Rates (Payable in Advance)

In Michigan:	Outside Michigan:
One year in advance\$8.00	One year in advance\$10.50
Six months\$4.50	Six months\$ 5.50
Single copies mailed\$.50	Single copies mailed\$.75

MEMBER
NATIONAL NEWSPAPER
Association - Founded 1888

National Advertising Representative:
MICHIGAN NEWSPAPERS, INC.
827 N. Washington Ave.
Lansing, Mich. 48906

JUST REMINISCING

Items taken from the files of The Chelsea Standard

4 Years Ago . . .

Thursday, April 28, 1977—

Michigan's PPB problem wound its way into the local community when state agricultural officials announced the quarantine of the 229-animal dairy herd owned by Ike Kozminski, on the Jack Rose Farm, 4678 Peckins Rd. Kozminski, through his wife, refused to comment on the situation.

On Monday, April 25, the Chelsea Board of Education met in a special session. The meeting was called to present the board's reaction to the report recently submitted by the Citizen Advisory Committee, and to finalize the millage request for the special election being held on May 23. The board will ask for a 4.4 mill increase for school operating costs.

Doug Truax, manager of publishing at the Institute for Social Research at Ann Arbor, was recognized at Boss of the Year by the Chelsea charter chapter of the American Business Women's Association during the group's first annual Boss Night at the Flaming Pit, Ann Arbor. About 42 ABWA members and their bosses attended the event.

14 Years Ago . . .

Thursday, May 4, 1967—

The first family in Chelsea to lose a son in Vietnam is Mr. and Mrs. John V. Mosier. Their 24-year-old son, Clive V. (Buster) Mosier, was killed in combat one week ago.

Mrs. Robert K. Taylor, chairman of the April Cancer Crusade for funds in the Chelsea area, reported this week that receipts of the annual Cancer Tag Day held here Saturday amounted to \$190. She said this was approximately \$30 less than the amount realized from the 1966 tag day.

On Thursday, April 27, the Chelsea Chamber of Commerce sponsored an Industrial Day program. All the teachers in the Chelsea School District were invited to participate in a round of plant tours.

The Parkside Relays, held Saturday, April 29 at Jackson, had a total of 13 schools competing, in the "Class B" competition. Chelsea was third.

WEATHER

Forecast . . .
Extended Outlook Tuesday through Thursday—Cool and dry period, high 40 to 50 Tuesday, Wednesday and Thursday. Low 20 to low 30s Tuesday and Wednesday and 30s Thursday.

For the Record . . .

	Max.	Min.	Precip.
Tuesday, April 14	63	31	0.31
Wednesday, April 15	57	36	0.00
Thursday, April 16	62	51	0.11
Friday, April 17	74	61	0.32
Saturday, April 18	62	49	0.18
Sunday, April 19	58	33	Trace
Monday, April 20	45	31	0.00

24 Years Ago . . .

Thursday, May 2, 1957—

Maxwell G. Sweet, who has been with the Chelsea Spring Division here since Feb. 14, 1951, has accepted a position as office manager for the architectural firm of Giffels and Valet, in Detroit, and began his new duties Tuesday morning, May 1. He and his family will continue to reside in Chelsea; Sweet will commute by train to Detroit each day.

William G. Kolb, present treasurer of the Chelsea School District Board of Education, stated this week that he will not seek re-election. He has been a member of the board since consolidation of the district nine years ago. His present term expires this year.

Three red foxes were taken in traps on the Joseph Czaplak farm, west of Chelsea this week. One was an aged male and the others were young males. A number of others are still known to be in the area since Czaplak has seen them through field glasses from the house.

The Office of Administration at Eola Village, McMinnville, Ore., has announced that Richard Schneider, son of Mr. and Mrs. Lewis Schneider of Chelsea, has accepted an invitation for a tour in Utah. Schneider is the manager of Eola Village and secretary-treasurer of the Board of Commissioners of the Housing Authority of Yamhill County. Eola Village is a housing project for agricultural migrants and registers some 5,000 people each year.

34 Years Ago . . .

Thursday, May 1, 1947—

Mrs. Homer Stofer, Lyndon township, and Miss Frances E. Wilson, county home demonstration agent, have been selected to appear on the "Farming Marches On," broadcast by station WJR, Detroit, Saturday morning, May 3, between the hours of 7:30 and 8 a.m.

The Chelsea School District will receive \$3,276 as its share of the \$123,960 Michigan sales tax refunds to Washtenaw county schools under the constitutional amendment adopted last November. The payment covers the period from Dec. 5, 1946 to April 1, 1947.

Trygve Lie, secretary general of the United Nations, declared today that the friendship of the United States and Canada "serves to strengthen the hope that all nations everywhere, may come to enjoy the benefits of a similar understanding with one another." In the statement, it was announced that the week April 27-May 3 is Kiwanis sponsored U.S.-Canada Goodwill Week.

Telephone your club news to 475-1371

MICHIGAN MIRROR

By Warren M. Hoyt, Secretary, Michigan Press Association

Construction Industry To Be Aided By Retirement Funds

State Treasurer Loren Monroe has put forth a plan to use about \$80 million in retirement system funds to provide financing for new home construction in Michigan.

Under the proposal, the money is to be funneled through banks and savings and loan associations to purchase blocks of mortgages from home builders.

Monroe said he is embarking on the new plan because high interest rates have stalled new home construction. "Our initiation of this program will provide builders with the necessary financing for new construction. It will provide lenders with money to loan potential home buyers," he said.

He noted homeowners will find it easier to get mortgage money and the state employees retirement system will, meanwhile, get a "handsome" return on an insured certificate.

The retirement system will get a new return of 13.7 percent if the loans are held to the maximum 30-year period.

The lenders (banks and savings and loan associations) will pay the state 12.875 percent interest and the issues will be guaranteed by the Mortgage Guarantee Insurance Corp.

Lenders would, in turn, be allowed to add one fourth of a percentage point as a handling fee when providing the funds for home builders.

The money is to be used to finance single-family, owner-occupied property, with a maximum loan for any one mortgage at \$125,000.

Some 75 banks and savings and loans have agreed to handle the mortgages.

Monroe said he expects all \$80 million to be committed within a few months. Four separate issues of \$20 million each will be authorized.

Treasury department officials

have discussed the program with the state's Investment Advisory Committee, which oversees investments of retirement funds, and Monroe said he did not expect that group to disapprove the mortgage program.

Stan Arnold of the state Building and Construction Trades Council welcomed the state's action saying it would prod home construction and get the industry moving again.

Governor William G. Milliken also praised the program saying it makes good sense to use Michigan money to solve Michigan problems.

Governor Milliken is expected to soon use the new prison overcrowding act to ease dangerous prison populations in state institutions.

Corrections Department Director Perry Johnson said it has become obvious that actions would have to be taken under the act to reduce the populations.

Prison population has been over the 12,874 capacity for more than 30 days—the factor which makes the overcrowding act take effect.

Once an overcrowding emergency is requested by the Corrections Commission, the governor will have 15 days to either declare the emergency or hold the commission was incorrect.

When an emergency is declared the minimum sentences of all prisoners—except those serving life terms—will be reduced by 90 days.

Between 900 to 1,000 prisoners could be released as a result of reducing sentences, a process that could take as long as 60 days to finalize.

Please Notify Us
In Advance of
Any Change in Address

dancing
&
singing
Telegrams
-313-
663-5788
DANCE 'O GRAM

Uncle Lew from Lima Says:

DEAR MISTER EDITOR:

Zeke Grubb told the fellers at the country store Saturday night that he is giving some thought to coming out of retirement and being a pusher. He said folks in this country are hooked on electricity, and now there's room for the small operator in this field. Zeke had saw where someone called the Public Utility Regulatory Policies Act has opened generating electricity to everybody that wants to get in it, and he figures there's some real money to be made if a feller can get hooked up right.

For instant, Zeke said, the Federal Energy Regulatory Commission has promised a market for all the energy folks want to generate. All you got to do, Zeke declared, is build a few windmills or rig up a generator fired by gas from your milking barn or chicken house, and you got a steady income. The Federal agency says this kind of operation is at least 30 percent more efficient than a big nuclear or coal power plant, so the power company could pay you a good price and still come out ahead. Zeke said the agency figures having a ready market will encourage enough backyard generators to turn out as much electricity as 12

large power plants by the end of the eighties.

General speaking, Zeke couldn't spark much interest in his cottage industry. Clem Webster, for one, was of a mind that this kind of deal usual winds up costing more than it pays. For instant, he had saw where a \$8.5 million battery is being built that would store enough power for 10,000 homes for one night. It's called the world's biggest battery, Clem said, and the idea is to help the power company keep up in peak periods. What it looks like, Clem allowed, is the old trick of making the blanket longer by cutting a strip off one end and sewing it on the other. The U. S. Department of Energy is backing the project, Clem reminded, and this is one of the outfits that ain't got a future in the Reagan Administration. Before Zeke cranks up any generators he'd best find out who'll be around to help him if the power company figures it can do the job better without him, was Clem's words.

Practical speaking, said Ed Doolittle, the Government's idea of saying usual ain't anybody else's. For instant, he recalled the tests has showed that it takes more energy to make alcohol for fuel than you get from the alcohol. Not long ago, the U. S. Department of Agriculture was bragging about the millions of acres of land that tractors had freed for raising food cause farmers and ranchers didn't have to raise hay for horses. Now these same experts are saying the most efficient way to get fuel from grain is not to make alcohol for the tractor, but to feed the grain straight to the horse and let the tractor stay in the shed. Pritty soon, the best advice we can get might be to make alcohol from the grain, feed it straight to the farmer to ease his worry about how to make a living spending \$10 more a head to raise hogs than he can sell em for.

As fer drinking, Mister Editor, I see where this study shows one drink makes a safer driver. If one is good, who's to say four wouldn't be wonderful?

Yours truly,
Uncle Lew.

Where To Write

FEDERAL—

Rep. Jim Dunn
1630 Longworth Bldg.
Washington, D. C. 20515
Ph. 1-202-225-4872
Lansing Office:
245 Federal Bldg., Lansing
48933
Ph. 1-517-377-1893

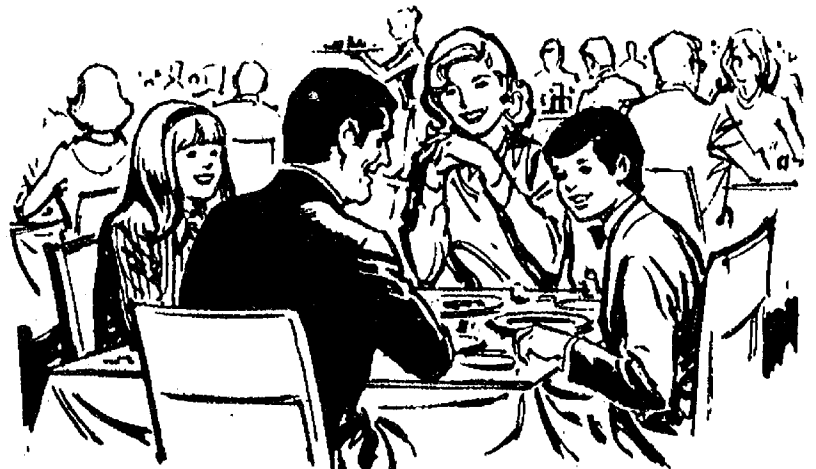
STATE—

Senator Edward C. Pierce
745 Senate Office Bldg.
Lansing 48909
Ph. 1-517-373-2406
Ann Arbor Office:
Ph. 313-665-4872

Rep. Mary Keith Ballantine
202½ Capitol Bldg.
Lansing 48909
Ph. 1-517-373-1775
Jackson Office:
1-517-0145

THE CAPTAINS TABLE

A Pleasant Place To Dine



WEEK-END EVENING SPECIALS

PRIME RIB sm. \$7.95
lg. \$9.95

FRIDAY
LAKE SUPERIOR WHITEFISH \$5.95
with salad bar

Choose from our
scrumptious home-made
Dessert Cart

THE CAPTAINS TABLE

8093 MAIN ST., DEXTER
PH. 426-3811

BONDED LOCKSMITH
DEADBOLTS INSTALLED
EMERGENCY SERVICE
KEYS CHANGED
NEW LOCKS
REPAIR
O'Kern's Locks & Keys
CHELSEA 475-8522

The Calvins

are

coming!

CALVIN KLEIN JEANS

DANCER'S

Chelsea's Friendly Dept. Store

You Read It First
In The Standard!

ORTHO SPECIALS

LAWN FOOD

5,000 sq. ft. bag \$ 7.98
10,000 sq. ft. bag \$14.98

WEED and FEED

5,000 sq. ft. bag \$12.98
10,000 sq. ft. bag \$22.98

CRABGRASS CONTROL

DROP SPREADER \$32.95
BROADCAST SPREADER \$35.95

CHELSEA HARDWARE

Your PRO Store

Pre-owned Cadillacs. Real value, affordable price.

1978 OLDS DELTA ROYALE SEDAN. Medium green, green cloth interior, power seats & windows, AM/FM radio. A very nice car.

1981 OLDS CUTLASS LS SEDAN. Silver exterior, tinted glass, air conditioning, accent stripe, electric rear defroster, deluxe wheel covers AM radio. Stk. No. P505.

1979 CADILLAC COUPE DEVILLE. Dark blue exterior, dark blue cabriolet roof, blue cloth interior, tilt/telescopic steering wheel, cruise control, rear defroster, power seats/windows/door locks, chrome accent molding, AM/FM stereo tape, low miles. Priced to sell.

1979 GMC JIMMY. Black, red interior, snow plow, tilt wheel, cruise control, air conditioning, textured top, AM/FM stereo cassette tape. \$7995.

1981 OLDS CUTLASS SUPREME BROUGHAM. Silver exterior, burgundy vinyl top, air conditioning, tinted glass, cruise control, tilt steering wheel, convenience group, floor mats, rear defroster, road wheels, AM/FM radio. Stk. No. P506.

1980 OLDS CUTLASS SUPREME COUPE. Yellow exterior, tinted glass, air conditioning, floor mats, sport mirrors, convenience group, electric rear defogger, accent stripe, road wheels, AM radio. Stk. No. P507.

1978 CADILLAC COUPE DEVILLE. A definite spring time car. 3-way yellow with leather interior, cabriolet roof, tilt steering wheel, cruise control, AM/FM stereo, rear defroster. \$6895.

1979 CADILLAC SEVILLE. 3-way aqua, leather trim, AM/FM stereo/CB, wire wheel discs, plus many more options.

1980 PONTIAC GRAND PRIX LJ. Extra sharp. Gold beige cloth seats and equipped with tilt steering wheel, cruise control, landau vinyl roof, rear defroster, power seats, power windows, power door locks, road wheels, AM/FM stereo. this one will not last long.

1980 OLDS CUTLASS LS. 4 door sedan, silver exterior, tinted glass, floor mats, rear defroster, 260 V-8 engine, tilt steering wheel, power door locks, air conditioning, cruise control, AM/FM stereo, convenience group. Stk. No. P502

1980 OLDS CUTLASS LS. 4 door sedan, red exterior, tinted glass, air conditioning, rear defroster, cruise control, road wheels, AM/FM stereo, convenience group, power door locks, dual sport mirrors, 260 V-8 engine, tilt steering wheel. Stk. No. P503.

1979 OLDSMOBILE TORONADO. Black exterior, black interior, red pin stripe, wire wheel discs, tilt steering wheel, cruise control, power steering/windows/door locks, electric rear defroster, AM/FM stereo cassette. One of a kind.

1980 OLDS CUTLASS SUPREME COUPE. Blue exterior, floor mats, electric rear defroster, dual sport mirrors, convenience group, tinted glass, air conditioning, road wheels, AM radio. Stk. No. P504

1978 FLEETWOOD BROUGHAM D'ELEGANCE. 3-way burgundy, comfort and quality throughout. Only \$7695.

1980 CADILLAC COUPE DEVILLE, D'ELEGANCE. Dark blue, blue cabriolet vinyl roof, tilt/telescopic steering wheel, cruise control, power seats, power windows, power door locks, AM/FM stereo, plus more. Only 9,800 miles. \$11,495.



Heritage Cadillac

3975 Jackson Rd.
Ann Arbor 769-8400
Open Mon. & Thurs. 'til 9



THE BLACK SHEEP REPERTORY THEATRE

Presents

THE ODD COUPLE

by Neil Simon

with special arrangement with Samuel French

PERFORMANCES

April 9-12, 16-19, 23-26

Thursday, Friday, Saturday, Sunday

Tickets: \$6 Adult
\$4 Senior Citizen/College Student w/ID
\$2 Children under 18

Supported By MCA

(313) 428-0880
138 E. Main Street
Manchester, Michigan

Thursday 8:15 pm
Friday 8:15 pm
Saturday 8:15 pm
Sunday 4:00 pm



Mr. and Mrs. Daniel William Schaeffer

Jan Machesky, Daniel Schaeffer Are Wed in Colorado Ceremony

Jan Adele Machesky and Daniel William Schaeffer exchanged wedding vows on Thursday, March 19 at the Jefferson Avenue United Methodist church in Denver, Colo. The Rev. Riley S. Grant officiated at the afternoon candlelight ceremony.

The bride is the daughter of Mr. and Mrs. Edward A. Machesky of Denver. Parents of the bridegroom are Mr. and Mrs. Robert A. Schaeffer of Chelsea.

Serving as maid of honor during the ceremony was Suzanne Walz of Denver while Glenn E. Artz of Mecosta served as the bridegroom's best man.

Immediately following the wedding ceremony, a reception was held at the home of the bride's parents on Nelson Ave.

Out-of-town relatives and guests attended from Chelsea, Mason, Mecosta and Pleasant Ridge. The newlyweds are residing in Leadville, Colo.

Ruth Circle Notes

The April meeting of the Ruth Circle, Methodist Women's Christian group, met for an Easter meeting on Wednesday, April 15 in the Crippen Building of the Garden Apartments.

Mrs. Alma Gonsler had a most interesting program, speaking on mission work at the Henderson Settlement in Kentucky which she and the Rev. Gonsler visited last year.

Hostesses were Mrs. Cora Dolan and Miss Mary Holmes.



OTTOMAN-PALMER: Mr. and Mrs. Joseph Ottoman of Chelsea have announced the engagement of their daughter, Karen to John E. Palmer, son of Mr. and Mrs. Edward Palmer of Dexter. The bride-elect is a 1976 graduate of Chelsea High school and is employed at National Bank and Trust Co. of Ann Arbor. Her fiancé is a 1977 graduate of Dexter High school and is an independent insurance agent working with Palmer Insurance Agency in Dexter. A Nov. 6 wedding is planned.

VFW Auxiliary Elects Officers

The regular monthly session of the Ladies Auxiliary of the VFW Post 4076 was held Monday, April 13 with 12 members attending. Elections of officers for 1981-82 were held and one additional delegate and alternate to the 6th District conventions were chosen.

New officers include Fran Zatorski, president; Virginia Schirmacher, senior vice-president; Mary Erskine, junior vice-president; Alexandria Ellenwood, treasurer; Gertrude O'Dell, chaplain; Eulahlee Packard, conductress; Goldie Hoover, guard; Lucy Platt, three year trustee; Patty Short, delegate and Nina Matthews, alternate delegate. The newly elected president appointed Dorothy Lentz as secretary.

The reports of last year's accomplishments were given by the various chairmen including profits of the recent rummage sale, the three month audit report and proceeds of the past month's bingo income.

Grave markers and emblematic flags were ordered which will be placed on the graves of deceased members prior to Memorial Day.

The VFW national home chairman, Mary Erskine, announced that the home carnival will be held July 12. \$10 was allowed for tickets for the use of the children at the national home at the time of the carnival.

The president announced that May 15 would be Poppy Day in Chelsea and asked for volunteers to sell the poppies. Another rummage sale, in conjunction with the Post, will be held April 24 and 25. Bertha White will be in charge for the Auxiliary and will have on hand some antique dishes which had belonged to her grandmother.

It was decided that the Auxiliary would assist the Post in sponsoring a breakfast for the national home children on their way to Cedar Point following the recess of school for the summer. \$20 was allowed, in the name of outgoing commander Gary Erskine, for the organ fund at the VA Hospital.

A total of \$25 was allowed in the name of Lucy Platt to purchase a picture for Ward 7 East at the Ann Arbor VA Hospital.

The assembly was reminded of the 6th District meeting to be held Sunday, April 26 in the Lansing Civic Center. This meeting will be hosted by the Lansing Auxiliary 701.

The Post and Auxiliary will hold a joint installation of officers, date to be announced. The newly elected president has chosen Miriam Albright as her installing officer.

The next Auxiliary meeting will be held Monday, May 11 at 7:30 p.m. in the VFW hall.

CAROL'S CUTS

40 CHESTNUT

Monday, Wednesday and Friday
475-7094

Appts. Only
9:30 a.m. - 3:00 p.m.



GIRL SCOUTS

TROOP 247

We made Easter bunny napkin holders. Christie Kozma brought treats.

Jennifer Bliss, scribe



Mr. and Mrs. Erwin Haist

Haists To Observe 50th Anniversary

In celebration of their 50th wedding anniversary, an open house will be held for Erwin and Ethel (Bruestle) Haist at the Chelsea Community Fairgrounds on Sunday, April 26 between the hours of 2 and 5 p.m. Friends and relatives are cordially invited to attend the event, hosted by the couple's sons, daughters and grandchildren.

Mr. and Mrs. Haist were married April 25, 1931 by the Rev. M. W. Brueckner at his home. Their attendants were Alma and Harold Bruestle, sister and brother of Mrs. Haist. Both are deceased.

Mrs. Haist was the former Ethel Bruestle, the daughter of

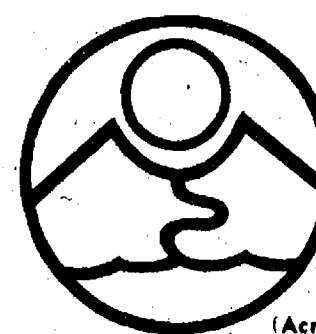
John and Emma Bruestle of Manchester. Mr. Haist's parents are the late George and Martha Haist of Chelsea.

Mr. and Mrs. Haist are members of Zion Lutheran church, Rogers Corners. They have been engaged in farming all

their lives.

The couple has four children: Arlene Bycraft of Chelsea, Doris Crocker of Kalamazoo, Kenneth Haist of Chelsea and Richard Haist of Jamestown, Mo. They have 12 grandchildren and one great-granddaughter.

We now have Pet Food, Pet Shampoo and Natural Anti-Flea Oil.



RIVENDELL
NATURAL
FOODS
3212 ALPINE
DEXTER, MICH 48130
426-2549
(Across from the Farmers' Market)

THE LOFT FRAME & ART GALLERY

107 1/2 S. Main St., Chelsea Ph. 475-2726

LIMITED EDITION PRINTS
& CUSTOM FRAMING



MASONIC TEMPLE
113 W. Middle St.
Chelsea, Michigan

Sunday, April 26, 1981

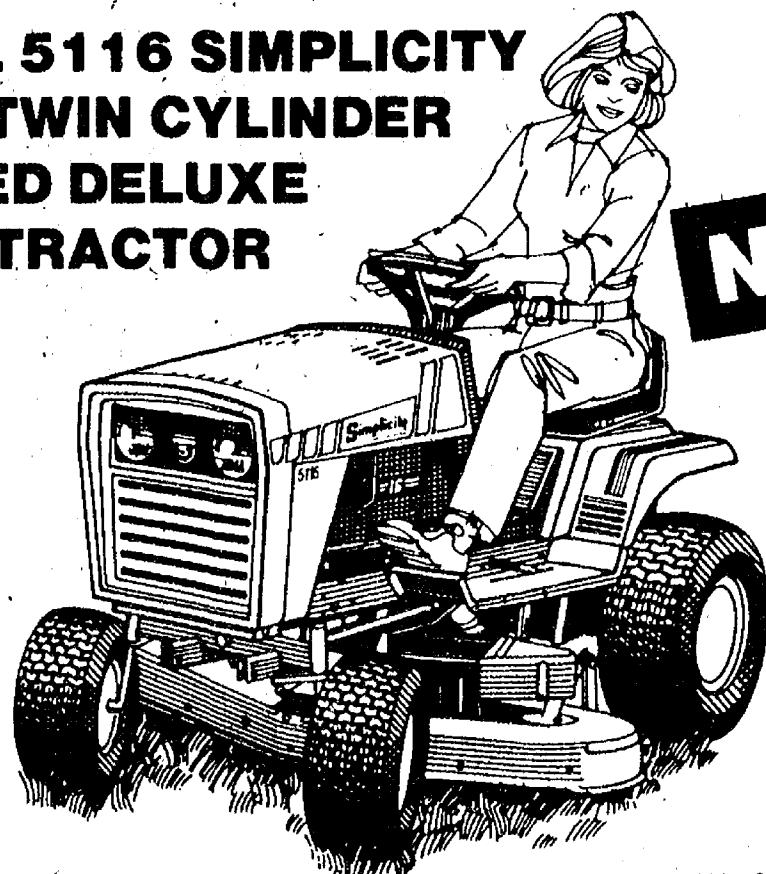
8:00 A.M. - 12:00 NOON

Adults \$2.25 Under 6 years \$1.25

"No One Goes Home Hungry!"

INTRODUCTORY SALE! \$1795 With 36" Mower

MODEL 5116 SIMPLICITY
16 HP TWIN CYLINDER
5-SPEED DELUXE
LAWN TRACTOR



NEW!

*Off Mr. Sug. Price

The perfect mowing machine for the larger lawn. Smooth, fuel efficient engine, quiet Lo-Tone muffler, extended wheelbase, wider stance and wide tread tires that are gentle on lawn and driver. Anti-scalp deep deck 36" or 42" mower rides on full width rollers, pivots with front axle for smooth, even cut. Options include cart, blade for light dozing, vacuum attachment, snowthrower. Hurry in.

SUPER
SAVIN'
DAYS

When you want dependability, look for...

Simplicity
AN ALLIS-CHALMERS COMPANY

CHELSEA HARDWARE

110 S. Main St., Chelsea

Ph. 475-1121

**Chelsea
Cleaners**

Ph. 475-1133

- ★ QUALITY DRY CLEANING
- ★ DRAPERY CLEANING
- ★ SHIRT LAUNDRY SERVICE
- ★ LEATHER & SUEDE SERVICE
- ★ SHOE REPAIR SERVICE

3 LOCATIONS:

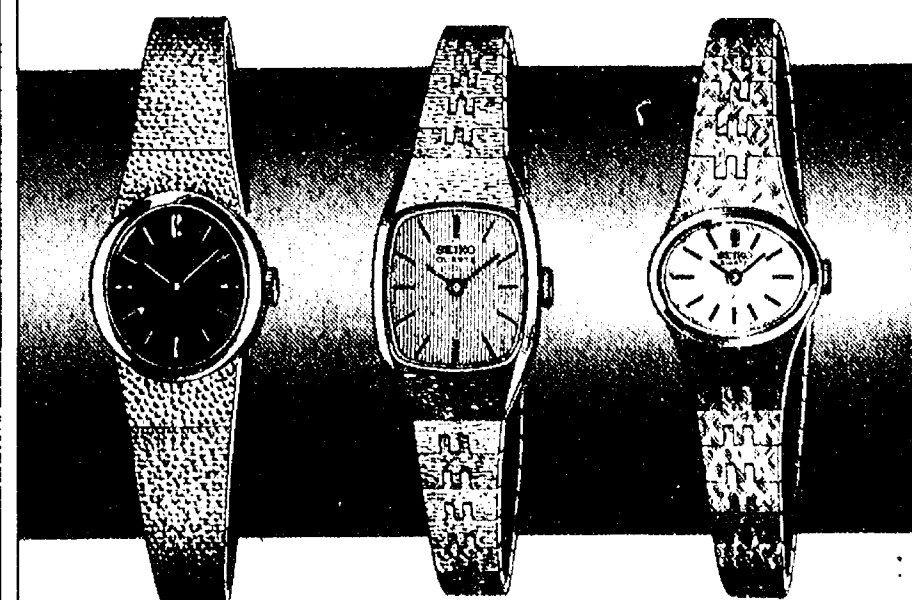
113 Park St., Chelsea (Main Plant)

126 E. Main St., Manchester

400 W. Michigan Ave., Grass Lake

Dry Cleaned Clothes Last Longer

When you demand perfection
in yourself,
Lady Seiko is your watch.



Seiko Quartz accuracy is world-famous, and rightly so. Seiko looks at timekeeping with a jeweler's eye, creating a collection of slim, elegant watches prized as pretty bracelets. Select from gold-tone and stainless steel styles in a variety of dial treatments. Your every expectation will be met in Seiko Quartz. 99

Winans Jewelry

You get the best of Seiko only where you see this sign.

SEIKO

MADE IN JAPAN

Al Machnik Patents Insulated Concrete Basement Wall System



Five years ago, Al Machnik, owner of Machnik residential construction on N. Main St. conceived an idea to manufacture insulated concrete precast systems for basement walls, deck construction and external residential walls. It was just an idea.

Today, MacWall offers the public its energy efficient precast insulated panel system. This wall system offers the homeowner all the advantages of poured concrete walls, block systems and all-weather wood foundations and eliminates the disadvantages associated. Franchises have become available and currently, D and J Gravel in Howell sells the MacWall system under the name of Michigan Precast Concrete.

As designer, Machnik, who makes his home in Plymouth, became associated with Darvis and Associates, Ann Arbor, currently the MacWall structural concrete design engineering firm.

The advantages to a polystyrene-insulated masonry wall are varied. The cost is competitive to both block and concrete wall construction and with insulation being of prime concern to the public recently, the precast system offers a resistance value or pass through rating of heat and cold of 23.0 while the average 10 inch solid concrete wall has an R rating of 1.0.

The MacWall system requires 60 percent less concrete than the typical concrete wall and requires no additional insulation. It contains 3" of rigid foam with an R rating of 11.55 and 5" of air space and can be attached to the slab floor. Pre-set firing strips allow for immediate application of drywall, panelling, or other interior finish.

The precast insulated panelling system installs quickly, requiring only two man hours and one hour of crane time to erect a 100-foot wall. This time element is significantly less than the time required for placing two sets of poured wall forms or laying block wall and following the panel placing, the job is done. In addition, it contains its own expansion and contraction joints to eliminate problems with cracking and leakage.

MacWall is a patented, code approved wall system which is not limited to residential construction. The product is stronger than block walls and equal in strength to concrete. MacWall, however, is 60 percent lighter than solid walls of equal thickness.

According to Machnik, the MacWall system will evolve into other uses as the system is put into practice. Currently, the system has been installed in one recently built home and it is anticipated that, in the future, the value of any residence or commercial building will increase if this type of energy-saving wall is installed.



EQUATIONS CLUB AWARD WINNERS: Participating in the Michigan League of Academic Games competition was this group of Beach Middle schoolers. Bringing home a 2nd-place trophy for their mathematical efforts were, front row, Jay Marentay, Carol Palmer, Loren Rosenberg, Jodi Keezer, and Sara Noah. Taking 4th-place

Beach School Equations Club Scores in Tourney

The Equations Club at Beach Middle school has belonged to the Michigan League of Academic Games all year. Three teams of five students each competed in the state Super Tournament at Eastern Michigan University on Saturday, April 11. All three teams scored extremely well for their first year in competition.

A sixth grade team of Loren Rosenberg, Carol Palmer, Jay Marentay, Sara Noah and Jodi Keezer brought home a second place trophy in their division and the other two teams won fourth places. The teams have had a very successful first year and are looking forward to additional competition next year.

Kinder Klub Members Sample Health Foods

On Tuesday, April 14, the Kinder Klub met at the Methodist church. Following the business meeting, members and guests, Earlene Albery and Diane Hubert, were enticed by the delicious health foods served by hostess Clara Ewald.

Instructor Vickie Fox led the group in a demonstration of aerobic dancing. The members voted to go to the dinner-theater in Toledo, Tuesday, May 19. Reservations are to be given to Shirley Paskowski by Tuesday, April 28.

Senior Citizen Nutrition Program MENU and ACTIVITIES

Week of April 21-24

Tuesday—Salisbury steak, whipped potatoes, creamed corn, wheat bread with margarine, red plums.

Wednesday—Pork stew with vegetables and biscuits, coleslaw, extra biscuits with margarine, ice cream. Creative expression, 9:45 a.m.

Thursday—Cornflake crumb chicken, baked potato with sour cream, broccoli, wheat bread with margarine, birthday cake. Senior fitness, 11 a.m.

Friday—Chili con carne with crackers, tossed salad, corn bread with margarine, rhubarb crisp. "Bible as History and Literature," 11 a.m.

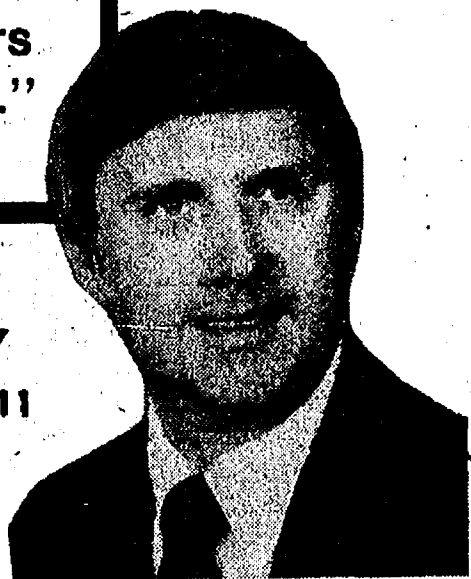
MacWall ENTREPRENEURS: Art, left and Joe Machnik explain the MacWall system of prefabricated concrete panels to be used in both residential and commercial buildings. The energy-efficient system, first conceived five years ago by Al Machnik, is currently being franchised and has been installed in one residential home to date.

"Because I offer life, health, home and car insurance, I get to know my policyholders and their needs."

And that makes it easier for me to give good advice on the right kind and amount of coverages.

CALL ME.

JERRY ASHBY
105 S. Main Ph. 475-1511



STATE FARM Insurance Companies
Home Office: Bloomington, Illinois

Like a good neighbor, State Farm is there.

WEST BANK

PRESENTS

LIVE MUSIC

WITH

J. R.

Tuesday through Saturday

DANCING 7 NIGHTS at the

HOLIDAY INN WEST

2900 JACKSON AVE.

ANN ARBOR

PHONE 665-4444

SPECIAL FACTORY BONUS REBATE
GET UP TO \$100 BACK
direct from Allis-Chalmers in addition to your dealer specials. Offer good thru May 22, 1981.



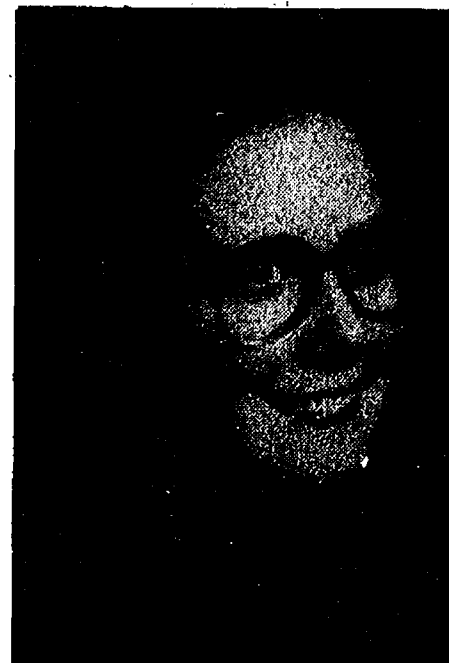
ALLIS-CHALMERS
LAWN AND GARDEN EQUIPMENT

We're offering big Greenback Savings to you on our entire line of lawn and garden equipment built "better by design." These tractors and mowers offer outstanding operator features like anti-scalp mower decks, controlled traction, and dependable engines for years of quality performance. Plus, our Parts and Service departments stand ready to serve you completely.

YARD-N-GARDEN Equipment, Inc.

2524 LANSING AVE., JACKSON

PHONE 784-3146



CHRIS KVARNBERG

Chris Kvarnberg Granted 2 WMU Scholarships

Chris Kvarnberg, a senior at Chelsea High school, has been awarded two scholarships by Western Michigan University in Kalamazoo for the fall 1981 semester. The first is a \$500 academic scholarship while the second is a \$400 School of Music scholarship. Both are renewable for four years.

Chris has been accepted by the WMU School of Music to study organ and applied music. She is the daughter of Don and Carol Kvarnberg of 5470 Conway Rd.

Please Notify Us In Advance of Any Change in Address

Lioness Club Plans Rummage Sale

The Chelsea Lioness Club will hold its second annual rummage and bake sale on Friday and Saturday, May 1 and 2 between the hours of 9 a.m. and 5 p.m. at the Longworth Plating Building on Chelsea's N. Main St. There will be bargains galore on toys, books, clothing, baby items and much more. Also available will

be home-made cookies, cakes, pies and delicious soft pretzels. The annual rummage sale is one of the ways that the Lioness Club raises funds it contributes to various community service projects. The majority of the money that is taken in by the club is returned to the community in order to assist the handicapped and others who are in need.

Views On Dental Health

By ROBERT A. BURNS, JR., DDS, P.C.

PLAQUE POINTERS

Plaque is probably the biggest cause of tooth decay and eventual loss. What is it—how do we acquire it—and how do we control it?

Plaque is the sticky, practically colorless film that builds continuously on the teeth. The main inhabitants of plaque are bacteria—one milligram of plaque can contain a half-billion bacteria. Bacteria ferment sugars in the mouth (why not to eat sweets), changing them to acids which then eat away at tooth enamel.

As the plaque creeps below the gum line, it mineralizes and becomes razor-sharp deposits of tartar which is the catalyst of periodontal (or gum) disease—by far, the major cause of tooth loss in adults.

Plaque must be removed

daily by "proper" brushing and the use of dental floss. Have your dentist or hygienist show you how to do it properly.

The best way, if not the only way, to remove tartar and long-established plaque is to have a professional cleaning. But, remember, it will start to reform the very next day. The only one who can remove plaque regularly is you.

If you have dental health questions you would like to see answered, please mail them to the address below.

A public service with the aim of promoting a better dental health environment. From the office of: ROBERT A. BURNS, JR., D. D. S., P. C., Chelsea Professional Building, 1200 S. Main St., Chelsea, Phone: 475-9124.

HASTINGS TREE FARM

9500 North Territorial Rd., Dexter
(Associated with Dexter Animal Clinic)

These locally-grown trees, 2 to 5½ ft. tall, are now available for landscaping.

- ★ AUSTRIAN PINE
- ★ SCOTCH PINE
- ★ RED (Norway) PINE
- ★ WHITE PINE
- ★ WHITE SPRUCE

Planting Season - Mid-April to Mid-May

Priced \$7 to \$18 with quantity discount available.

Variety of White Birch now available.

All stock state inspected, guaranteed and planted in biodegradable containers.

★ We also give free estimates on landscaping.

Phone (313) 426-3985

Chelsea Girls Relays Slated Friday on Dexter's New Track

Two things will be different for the sixth annual Chelsea Girls Track Relays. The meet has been moved to Friday, April 24, one week later than usual because of the Easter holiday. And, in anticipation of a larger field, the meet is scheduled to be held on the new eight-lane track in Dexter. This move was made so that the number of teams invited could be increased without adding to the length of the meet.

The caliber of competition is again strong this year. Last year, Chelsea won the meet in the final two events; only four points separated the top four teams. This year's meet could prove to be just as close. Milan appears to have a slight edge on over-all balance but Jackson Lumen Christi, Hillsdale and last year's runner-up, Tecumseh, will challenge. Newcomer Holly has entered some good times in the sprint relays and could also be a contender.

The distance relays figure to be especially tough this year. Dexter, with Lisa Goltman and Kelly McKillen, will be as strong as Milan. Hillsdale brings back most of the runners from last year's winning distance and two-mile relays. All three teams were among the best in the state in cross country.

Lumen Christi has everyone back from last year's record setting sprint medley but the Titans will be pushed by Holly and Milan

who has Tracey Early, one of the top sprinters in the SEC.

Host Chelsea's strength is in the field events. Mary Boylan and Lorrie Vandegrift are defending shot put champs and are leading contenders in the discus. Vandegrift teams with Tracy Bohlender to give the Bulldogs a strong high jump team. If Chelsea is to win, not only will they have to battle the other

teams, but also overcome a jinx which has seen none of the previous champs repeat their performance.

The competing teams are Carlton Airport, Chelsea, Dexter, Erie-Mason, Hartland, Hillsdale, Holly, Lumen Christi, New Boston Huron, Novi, Saline, Tecumseh and Milan. The field events begin at 4 p.m. while track events follow at 5 p.m.

Area Students Cited at Honors Convocation

Eastern Michigan University recognized the academic achievement of 3,043 students at its 33rd Honors Convocation Wednesday, April 8, in Pease Auditorium. The honors list included all EMU students with a cumulative grade point average of 3.0 or better on a scale with a maximum of 4.0. A total of 440 freshmen, 574 sophomores, 763 juniors and 1,266 seniors received honors.

Dr. Alvin E. Rudisill, dean of Eastern's College of Technology, delivered the John M. Munson address at the convocation. Presiding over the ceremony was EMU President John M. Porter.

Area students receiving certificates for academic achievement were Heidi J. Hehr of Loch Alpine; Chelseaites Susan K. Bauer of 252 Park St.; Jane Belser of 216 Park St.; Ellen Bernard of 2545 Lima Center Rd.; Mary K. Booms of 13829 Riker Rd.; Caroline R. Enderle of 12755 Scio Church Rd.; Robin J. Fenton of 12535 Scio Church Rd.; D. Bruce Galloway, 239 Blind Lake Rd.; Deanna L. Johnson, 542 McKinley; Mary C. Keane, 7755 Clark Lake Rd.; Roberta M. Kemp, 851 Pierce Rd.; Kurt D. Kilby, 2450 Crooked Lake Rd.; Karen N. Mirochna, 237 E. Middle St.; Linda L. Montgomery, 20232 Scio Church Rd.; Don E. Morrison; Julie Prohaska, 14580 Stofor Ct.; Nanette L. Push, 13415 E. Old US-12; Annette C. Rejall, 1645 S. Fletcher; Donna J. Schiller, 17221 Caroline Trace; Susan J. Schulze, 20086 Brown Dr.; Patricia A. Sinn; and Anne M. Williams, 12190 Jerusalem Rd.

Students from Dexter, receiving certificates of academic achievement included Carol M. Anderson, 4690 Dexter-Pinckney Rd.; Angela J. Burns, 3535 Forshee Lane; Ronald E. Crawley, 3625 Cushing Ct.; Barbara L. Daniel, 8074 Huron; Donald K. Edwards, 8235 N. Territorial Rd.; Lynette D. Elsele, 7645 Third; Andrea L. Frank, 9800 Island Lake Rd.; Audrey E. French; Barbara A. Huskins, 8160 Walsh Rd.; James A. Kirk, 8011 Main St.; Pamela A. Lovell, 3512 Central; Frerick C. Mikeska, 3020 Inverness; Jane E. Moore, 3520 E. Pineview; Dawn M. Reeves, 8220 Scully Rd.; Mary J. Roth, 6420 Scully Rd.; Michael J. Schlaff, 8283 Mast Rd.; Mark J. Snyder, 2038 Jananne Dr.; and Cathy M. Williamson.

Two students from Gregory was also honors recipients. They included William T. Blewett of 190 Blind Lake Rd. and Amber L. Ward of 117 Blind Lake Rd.

From Manchester, students receiving honors were Elaine E. Cox, 11725 Heiber Rd.; Carol M. Miller, 235 S. Washington; Keith C. Moore, 10695 Pleasant Lake Rd.; Sandra S. Moore, 12894 Sharon Hollow; Daphne F. Nickels, 704 City Rd.; Beverly A. Szczygielski, 7120 Haskley Rd. and Corinne K. Widmayer, 5191 Esch Rd.

Students from Pinckney were also awarded recognition for their academic achievements. This group was made up of Randa A. Al-Awar, 9880 Stinchfield Woods Rd.; Frank J. Cooper, 2909 Indian Trail; David A. Dale, 9815 Toma; Sandy K. Darrow, 247 Mill St.; Steven G. Deimen, 11695 Oakhill; Janice M. Greatorex, 8811 Coyle Dr.; Sharon L. Horgan, 1360 Darwin Rd.; Arthur L. Jodoin, 9191 Mayfred; Roberta G. Kovacich, 3889 Green Hills Dr.; Deborah S. Lawson, 3741 Elmhurst; Steven A. Lewis, 1690 E. M-36; Linda C. Loory, 12227 Max; Richard C. Lyons, 9328 Dexter-Pinckney Rd.; Kevin J. Marsha, 3659 Junior Dr.; Jack B. Novick, 10334 McGregor; Marianne Posler, 1221 Mower; Beverly M. Pruitt, 4100 Schafer; Roberta A. Reck, 8979 Rush Side Dr.; Deborah K. Rein, 9942 McGregor; Joie A. Slotnick, 11744 Tamarina; Richard Szado, 10355 Elizabeth; Michele R. Tart, 15301 Livermore; and Tina M. Tomasik, 11213 McGregor.



"A SALUTE TO SPRING": Preparations got underway for the Chelsea Community Hospital May Day benefit dance to be held Friday, May 1 at the Knights of Columbus Hall on Dexter-Chelsea Rd. Discussing preliminary arrangements were hospital auxiliary members, Neta Mills, finance

chairman, committee member Gale Johnson and gourmet chef Sherry Sundling. Entertainment, dancing and hors doeuvres will highlight the event and all proceeds will go the Hospital's Summer Speech Therapy and Disability Program.

Hospital Auxiliary Plans 'Salute to Spring' Dance

The Chelsea Community Hospital "Salute to Spring" is planned for May 1. The May Day celebration will include dancing to the music of the Richmond Browne Quintet, entertainment by Fat Bob the Singing Plumber and gourmet hors d'oeuvres prepared by Sherry Sundling.

The semi-formal dance is sponsored by the Chelsea Community Hospital Auxiliary. It will be held at the Knights of Columbus Hall, 8265 Dexter-Chelsea Rd., Friday, May 1 from 9 p.m. to 1 a.m. Tickets are \$18 per couple and are on sale at Chelsea Drug Store, Chelsea State Bank, Chelsea Community Hospital, The Dexter Bakery and Brown's Drug Store in Stockbridge. A cash bar will be available.

The dance combines an opportunity for entertainment and a chance to help those persons

from the area who are in need of assistance. The proceeds from the benefit will be used in the Summer Speech Therapy and

Disability Program and will help provide a scholarship for a person pursuing an education in a medically related field.



KITCHEN REMODELING

- ★ We at Dutch Country are kitchen remodeling specialists.
- ★ Expert installation available.
- ★ Free design layout service.
- ★ Featuring: HAND CRAFTED AMISH CABINETS.
- ★ Distinctive "GOLDEN OAK CABINETS" By Continental.
- ★ Jenn-Air Appliances ★ Delta Faucets ★ Elkay & Kohler Sinks.

VISIT OUR SHOWROOM

DUTCH COUNTRY KITCHENS

146 E. Main 428-7292 Manchester

TIDY CAR

WORLD'S LEADING AUTO APPEARANCE SPECIALISTS

Keep your image shining with Tidy Car.

PROTECTION AND BEAUTY FOR YOUR:

PLANE - BOAT - R.V. - MOBILE HOME CAR - VAN - COMMERCIAL VEHICLES

- ★ PRESERV-A-SHINE UPHOLSTERY GARD (2)
- ★ INTERIOR CLEANING
- ★ VINYL ROOF REVITALIZATION
- ★ QUAKER STATE METAL GARD RUSTPROOFING
- ★ EXECUTIVE CAR CLEAN UP, BUFF & SHINE

Free Pick-Up & Delivery

TOMPKINS ELEGANT AUTOS

3663 South M-52 5601 W. Michigan
Chelsea, Mich. 48118 Ypsilanti, Mich. 48197

1-(313) 475-2952 1-(313) 434-3041

McCalla Feed Service

Ph. 475-8153

12875 Old US-12 Chelsea

IDEAL LIVESTOCK EQUIPMENT

HEATERS FOR WATER TANKS

HAY and STRAW

CRACKED CORN - BIRD FEED

WOOD SHAVINGS

WAYNE DOG & CAT FOOD

DOG BISCUITS

SALT OF ALL KINDS

Complete Line of WAYNE FEEDS

SPRING FURNITURE

CLEARANCE

Our showroom is overcrowded with a wide variety of furniture and we need room. New shipments are arriving every few days and we have to make room for them so prices are being reduced for quick removal.

SAVINGS OF 10% to 50%

Come see for yourself and save a bundle!

- ★ Living Room Suites
- ★ Breakfast Sets
- ★ Bedroom Suites
- ★ Dining Room Suites

Also, Big Savings on

- ★ ZENITH TELEVISIONS
- ★ MAGIC CHEF APPLIANCES
- ★ FRIGIDAIRE APPLIANCES

MEABON'S

TV, FURNITURE & APPLIANCES

1170 M-52, Chelsea

Ph. 475-1666

Jiffy market

Big Enough To

Serve You . . . Small Enough To Know You!

Corner of Sibley and Werkner Rds. - Chelsea, Michigan 48118

PHONE 475-1701

Sale Prices Effective April 21 thru April 25

U.S.D.A. CHOICE BEEF STEAK



Full Cut

ROUND STEAK

\$2.19 lb.

CLUB STEAK	lb.	\$3.89
T-BONE STEAK	lb.	\$3.99
SIRLOIN STEAK	lb.	\$3.09
Porterhouse Steak	lb.	\$3.99
RIB STEAK	lb.	\$3.09

FRESH GRADE A LARGE

EGGS

doz. 69¢

FRITO-LAY
PRETZEL
TWISTS

11-Oz. Bag 79¢

ECKRICH
SMOK-Y-
LINKS

10-Oz. Package \$1.19

FRESH
CABBAGE

29¢ lb.

QUAKER MAID
Vanilla
Ice Cream

1/2 gal. \$2.09

7-UP

2-liter bottles \$1.29

Plus Deposit

FARM MAID SPECIALS

HOMOGENIZED

MILK

gal. \$1.98

Low-Fat Milk

gal. \$1.69

HALF & HALF

1/2 pt. 65¢

YOGURT

Asstd. Flavors 8-Oz. Ctn. 37¢

KLEEN-MAID

WHITE BREAD

20-Oz. Loaf (1-Lb., 4-Oz.)

49¢

FRESH MEATS - GROCERIES - PRODUCE - BEER - WINE - LIQUOR
Open 7 a.m. Morning to 10 p.m. Nights - 7 Days A Week

1981	April					1981
S	M	T	W	T	F	S
			1	2	3	4
5	6	7	8	9	10	11
12	13	14	15	16	17	18
19	20	21	22	23	24	25
★	26	27	28	29	30	

COMMUNITY CALENDAR

Monday—

Chelsea Kiwanis Club meets every Monday, 8:30 p.m. at Chelsea Community Hospital.

St. Mary's Altar Society, first Monday of each month, 7:30 p.m., at Rectory basement.

Chelsea Lioness, second Monday of each month at the Meeting Room in the Ann Arbor Trust Co. 69 M-52, Chelsea, at 7:30 p.m. Call 428-7179 or 475-9455 for information.

Lima Township Board regular meeting first Monday of each month, 8 p.m., Lima Township Hall.

Chelsea-Dexter School Districts Swine Club, Monday, April 27 at 8 p.m. in Room 740, Chelsea High school. Any person interested in exhibiting swine at the Chelsea Community Fair should attend. Further information may be obtained by calling Keith Gafner at 475-7558. Weigh-in will be Saturday, May 2 from 2 to 3 p.m. at the Chelsea Fairgrounds.

Tuesday—

Lima Township Planning Commission, third Tuesday of each month, 8 p.m., Lima Township Hall.

Lyndon Township Board regular meeting, third Tuesday of each month, 7:30 p.m., in Lyndon Town Hall.

Chelsea Village Council, first and third Tuesdays of each month.

Inverness Country Club pot-luck and euchre party, 6:30 p.m., first Tuesday of each month.

Lions Club, first and third Tuesday of every month, 6:45 p.m., at Chelsea Community Hospital.

Chelsea Community Hospital Nutrition Program pre-natal nutrition classes, fourth Tuesday of each month, 6 to 7 p.m. at the hospital. To register, phone 475-1311 (ext. 354). Class is free of charge.

Sylvan Township Board regular meetings, first Tuesday of each month, 7 p.m., Sylvan Township Hall, 112 W. Middle St.

Rebekah Lodge No. 130 first and third Tuesday of each month, 7:30 p.m.

Chelsea Child Study Club second and fourth Tuesday of each month, 8 p.m.

Chelsea Jaycees, first Tuesday of each month. For more information call, 475-7285.

Panel discussion on school curriculum Tuesday, April 28, 8 p.m. Beach Middle school, Media Center. Sponsored by Modern Mothers Child Study Club. Public welcome.

Woman's Club of Chelsea, annual business meeting Tuesday, April 28 at McKune Memorial Library. Hostess for the evening Janice Glazier.

Wednesday—

Recreation Council first Wednesday of each month, 7:30 p.m. in the village council room above the police offices. Open to the public.

Chelsea Communications Club, fourth Wednesday of each month, 8 p.m., Chelsea Lanes basement meeting room.

Dolls, antique and collectibles show, sponsored by Waterloo Area Historical Society. Spring Educational Meeting at Stockbridge Legion Hall. Wednesday, April 22, 7 p.m.

Roger Corners Study group Wednesday, April 22, 8 p.m. at home of Leona Osentoski, 2310 S. Fletcher Rd.

Thursday—

North Lake United Methodist Church Community Men's Group, second Thursday of every month at 7:30 p.m. in the activities building.

Chelsea Band and Orchestra Boosters, second Thursday of each month, 7:30 p.m., high school band room.

Meetings of the Lyndon Township Planning commission are held at 8 p.m. the second Thursday of every month at Lyndon Town Hall.

Knights of Columbus Women's Auxiliary, second Thursday of each month, 8 p.m. at K. of C. Hall, 20750 Old US-12.

Huron Valley Quilting Society, Thursday, April 23, 7 p.m. at St. Andrew's Episcopal church, 306 N. Division, Ann Arbor. A film entitled, "Quilts in Women's Lives" will be shown, and Linda Bryant will share her experiences as a quilter in Kansas.

Homemaker club, 7:30 p.m. Thursday, April 23 at the Martin home on Sharon Hollow Rd.

Friday—

Chelsea Lioness Club 2nd annual Rummage and Bake Sale Friday, May 1 and Saturday, May 2, 9 a.m. to 5 p.m., at Longworth Plating Building, Main St., Chelsea. Bargains galore plus fresh home-made pretzels and other baked goods. advx47-2

Senior Citizens meet third Friday of every month, pot-luck dinner, games and cards. 6 p.m. at Senior Citizen Activities Center on W. Middle St.

Saturday—

Vermont Cemetery annual meeting, Saturday, May 2, 1:30 p.m. at the cemetery. In case of rain, meeting will be held at the home of Vernon Satterthwaite.

Chelsea VFW Rummage Sale, Friday and Saturday, April 24 and 25, 9-5, VFW Hall, Chelsea. advx46

Stockbridge American Legion Dance, Saturday, May 2, 9 p.m. to 1 a.m. Music by the Researchers. advx47-2

Sunday—

Misc. Notices—

Home Meals Service, Chelsea. Meals served daily to elderly or disabled. Cost per meal, \$2.25 for those able to pay. Interested parties, call Barbara Branch, 475-7644 or Ann Feeney, 475-1493.

North Lake Co-Op Nursery school is now taking enrollments for the 1981-82 year for 3- and 4-year old sessions. Anyone interested should call Jan Knott, 475-2455.

Lamaze childbirth preparation classes are offered continually at Chelsea Community Hospital. To register, call 475-9558 or 475-7484.

Chelsea Co-op Nursery is now accepting applications for fall, 1981. Please call Denise Martell, 475-1968, or Georgette Hansen, 475-2245.

Genealogical Society of Washtenaw County, Sunday, April 26, 2:30 p.m. "How To Join An Hereditary Society," by Mrs. Aloa Anderson. Class, 1 p.m. Collection and use of cemetery records. Washtenaw Community College, Liberal Arts and Science Building, N. Entrance, Lecture Hall 2. Visitors welcome.

Lecture Slated On Printmaking

On Tuesday, April 21, 7:30 to 9:30 p.m., the Ann Arbor Art Association will present a lecture on the art of printmaking given by local artist and printmaker Nancy R. Davison.

The lecture will focus on the technical processes of etching, lithography, engraving and the various other forms of printmaking. Recognizing the differences between the many processes will also be included.

The lecture is open to the public, free of charge and will be on the second floor of the Art Association at 117 W. Liberty, Ann Arbor.



DR. FRITZ W. WAGNER, left, Director of the School of Urban and Regional Studies at the University of New Orleans and delegate of the University of Washington, paused to chat with Chancellor Leon J. Richelle prior to the chancellor's inauguration at UNO Friday, March 6. Dr. Wagner is the son of Mr. and Mrs. F. J. Wagner, 319 Congdon St.

LATE ADS

Classified Clips

More Classifieds in Second Section.

Ads received after 4 p.m. Saturday will appear in this section.

Automotive 1

73 PLYMOUTH DUSTER — Hatch-back, power steering, power brakes, air conditioning, good body, very little rust, 47,000 miles, \$1,000. Ph. 426-8007. x47-2

Farm & Garden 2

YEARLING LAYING and leghorn hens. Ph. 475-8289. 46-2
PASTURE FOR RENT, 35 acres, good fences, running stream, cattle only. Ph. 426-3416. x46

BLACK DIRT and PEAT

Proven excellent for lawn, gardens and flower beds.
Delivered or you haul, 1 load
Guaranteed Satisfaction.
Ph. 428-7784. x46lf

MICHIGAN GROWN EVERGREEN NURSERY STOCK

Potted Pines, Spruce, Fir \$5-\$20
Dig your own WHITE PINE, COLORADO SPRUCE \$4-\$20
5' to 6' CLUMP BIRCH \$14
Assorted Ornamental Shrubs \$6 or 2 for \$11 your choice

Christmas Tree Lane

4311 Fishville Rd. (off Francisco Rd.) Grass Lake, MI.
Ph. (517) 522-8321
Open 9 a.m. - 6 p.m.
Closed Tuesday & Wednesday x46

Recreation Eqp. 3

WURLITZER 1550-A, JUKE BOX. Plays 78's and 45's. Includes original service manual. Good original condition. \$700. Ph. 475-3526. x46

For Sale 4

5 or 15 wooded acres. On Mt. Hope Rd., between Stockbridge and Munih. Phone 1-(517) 851-8960. x46

SEARS-ST/10 GARDEN TRACTOR with 42" mowing attachment. Used 2 seasons. Paid \$1,600 new; moving, will sacrifice for \$600. Ph. 475-3526. x46

ON-TV SPECIAL \$9.95 plus \$50.00 refundable deposit to install. Reaches all areas—no cable needed. 40 movies a month plus sports. Call any day 9 a.m. to 9 p.m. Howell (517) 546-3145. x46

30" G. E. ELECTRIC STOVE, 2-G.E. washers, Kenmore dryer, portable Whirlpool dryer. Built-in gas stoves, 22" wide and 25" high, 4-new bathroom vanities, 2, 37" wide and 2, 31" wide, 2-buffets, 2-piece dresser, dining room table and chairs, office chairs, tables, tools, lots of other things, all priced to sell, 7997 Grand. Ph. 426-3355 persistently. x46

Garage Sale 4b

MOVING SALE — Furniture, dishes, clothes, TV's, some antiques — Thursday, Friday and Saturday, April 23, 24 and 25 from 10 a.m. to 5 p.m. 4815 Dexter-Pinckney Road. x46
GARAGE AND MOVING SALE. Furniture, building supplies and other miscellaneous items. Sat. and Sun. April 25 and April 26 from 9 to 5. 8748 Beaman Rd., Chelsea. (1/2 mile north, off Waterloo Road.) x46

Nearly four million veterans who have kept their GI life insurance policies in force will share in a record \$619.7 million dividend during 1981. Each veteran's share will be paid automatically on the anniversary date of his or her policy.

Help Wanted 8

DIETARY AIDE

Chelsea Community Hospital currently has one full-time position available for a dietary aide; working from 6:30 a.m. to 3 o'clock p.m. Must be able to work some week-ends and holidays.

Previous experience is desired but will train appropriate person.
For more information contact Personnel Representative

CHELSEA COMMUNITY HOSPITAL
775 SOUTH MAIN
CHELSEA
PHONE (313) 475-1311

Equal Opportunity Employer. x46

PERSON TO CREOSOTE fence, messy job that pays \$2.50 per hour. Ph. 426-3416. x46

Wanted 10

BOAT DOCKAGE on Portage or Bose Line Lake. Ph. 426-4886. 15-2

For Rent 11

OAK BEAMED COUNTRY HOME to share in wooded lake area, organic garden, horse pasture, barns. Ph. 449-2421. x47-2

OLDER 2-BEDROOM DUPLEX in Chelsea with garage \$330 per month. Available June 1st. Ph. 475-8260. x47-2

APRIL 16: ARBOR DAY

Trees clean the air, provide shade, shelter and beauty. We will be planting trees at area schools — please observe Arbor Day with us — plant a tree!

McCLEAR'S EVERGREEN NURSERY
11362 TRIST RD., GRASS LAKE
(517) 522-5177



Bring all articles for the sale to Longworth Plating Bldg. on Thurs., May 21, 10 a.m. to 2 p.m.

'Trinkets to Treasures' Sale

Friday, May 22 and Saturday, May 23

We will sell all your 'Trinkets to Treasures' that are in excellent condition on a 50% consignment basis.

We will also accept donations.

Bring all articles to Longworth Plating Building on N. Main St., Chelsea.

THURSDAY, MAY 21

Between 10 a.m. and 2 p.m.

For MORE INFORMATION

CALL ANNE COMEAU

Ph. 475-9753

Sponsored by St. Mary's Church, Chelsea

FEED FOR PROFIT

See us for feed needs!

Feed Formulas Tested, Proved To Get Results

Extra proteins, vitamins and minerals in proper balance, scientifically blended, make our feeds real profit producers for you.

Farmers' Supply Co.
Phone 475-1777

BOB SILVA SAYS:

LOOK AT THIS SPRING SAFETY CHECK

15% DISCOUNT ON ANY TUNE - UP

FREE BODY REPAIR ESTIMATES

OIL CHANGE FILTER CHANGE LUBRICATION \$16.88

We Will Check:

- ✓ BRAKE SYSTEM
- ✓ LIGHT SYSTEM
- ✓ COOLING SYSTEM
- ✓ EXHAUST SYSTEM
- ✓ STEERING SYSTEM

Regular Cost..\$26.04

Now Only \$12.88

PLUS: Save 10% during April on any repairs made as a result of this check-up.

BOB SILVA

1603 S. MAIN CHEVROLET 475-1373

Main Street at Interstate 94

SATURDAY, APRIL 25

10am 'Til 5pm

Lawn Tractors

Two models to choose from — the 8-hp 108 with 30-inch mower and the 11-hp 111 with 38-inch mower. Both have 5-speed transmission. Rear bagger, front blade, and snow thrower available.

THE TASK-MASTERS

John Deere Compact Utility Diesel Tractors

These compact tractors master all kinds of jobs. Five models — 14.5, 18, 22, 27, and 33 PTO hp. Have Category 1 3-point hitch (load and depth-sensing on the 1050). Eight speed transmission 540-rpm PTO (continuous running on the 1050). 650, 750, 950, and 1050 Tractors are available with mechanical front-wheel drive. See us today for a demonstration.

DEMO DAYS

Special demonstrations this weekend on John Deere Lawn and Garden Equipment

DELUXE 21-INCH MOWERS

Three models — push-type, self-propelled and electric-start self-propelled. Push-type has 3 1/2-hp engine. Self-propelled have 4-hp engines and rear-wheel gear drive. Optional 2 1/2-bushel rear bagger.

14- and 17-hp Tractors

Two hydrostatic drive models — the 14-hp 314 and the twin-cylinder 17-hp 317. Hydraulic lift. Built-in headlights. Color-coded controls. Variety of implements available.

10- to 16-hp Tractors

Choose from 10, 12, 14, and 16 hp. Built-in headlights. Variable-speed drive. Color-coded controls. Wide range of implements available. Test drive a 200 Series soon.

Save on selected John Deere Lawn and Garden Equipment

The 108 Lawn Tractor 8 hp x \$10 = **\$80 OFF.**

The 111 Lawn Tractor 11 hp x \$10 = **\$110 OFF.**

The 210 Lawn and Garden Tractor 10 hp x \$10 = **\$100 OFF.**

The 212 Lawn and Garden Tractor 12 hp x \$10 = **\$120 OFF.**

The 214 Lawn and Garden Tractor 14 hp x \$10 = **\$140 OFF.**

The 216 Lawn and Garden Tractor 16 hp x \$10 = **\$160 OFF.**

The 314 Lawn and Garden Tractor 14 hp x \$10 = **\$140 OFF.**

The 317 Lawn and Garden Tractor 17 hp x \$10 = **\$170 OFF.**

The 400 Lawn and Garden Tractor 20 hp x \$10 = **\$200 OFF.**

These discounts are off regular retail price.

EARLY BIRD SALE

HURON FARM SUPPLY

8250 DEXTER - CHELSEA RD. DEXTER 426 - 8847

Sluggers of the Week



TAKING THEIR PLACES on the Bulldog baseball team are sophomores Gary Van Meer, left, and Mike Barels, right, and senior Sean Peterson. Van Meer, in his first year on the varsity team, plays alternate positions at first and third base. Peterson, a returning letterman, is a key player for the 1981 Bulldog sluggers, holding down positions in the infield as a second baseman and pitcher. Sophomore Mike Barels will spend his season in both the infield, at first base, and in the

outfield. All three sluggers of the week participate in other CHS varsity sports; Van Meer played football last season while Peterson and Barels were members of the 1980-81 Bulldog cage team. This trio, in co-operation with their 18-man team, is currently hoping to break out of an early-season slump. The Bulldogs have posted a 0-3 slate in non-league games, thus far and begin their league competition this week.

Pinckney Area Youth Completes Navy Recruit Training

Navy Seaman Recruit John M. Tinling, son of Joan M. Tinling of 11442 Algonquin, Pinckney, has completed recruit training at the Naval Training Center, Great Lakes, Ill.

Walk America Saturday To Benefit Dimes Fund

Jill and Andrea Henry, the Washtenaw-Livingston area March of Dimes Poster Children are getting into practice for Walk

America. The big walk is scheduled for April 26, at the Farm Council Grounds on Saline-Ann Arbor Rd. Jill and Andrea will cut the ribbon at 9:30 a.m. so Walkers should plan to arrive at the grounds by 9 a.m. for registration.

Andrea represents the 250,000 children born with birth defects each year in the United States and her twin sister, Jill, represents where we are headed with your help—the chance for all babies to be born healthy.

To join in the fun of a country walk in the Spring, stop in at McDonald's Restaurant, National Bank & Trust, Ann Arbor Bank, Citizen's Bank of Saline, Manufacturer's Bank of Saline, Huron Valley Bank, Great Lakes Federal, your city hall or some school offices and pick up sponsor sheet.

EMU Forensics Team Repeats As State Champions

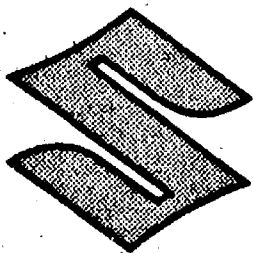
The Eastern Michigan University forensics team continued its domination of the state championship tournament, amassing more than two times as many sweepstakes points as the second place team and winning five out of six state titles.

Assisting the forensics team was Julie Prohaska, who took third place in the persuasion competition. She is the daughter of Mr. and Mrs. David Prohaska of Stofer Ct.

Sponsored by the Michigan Intercollegiate Speech League, the state championship tournament was held Friday and Saturday, March 20 and 21 at Henry Ford Community College in Dearborn. Teams from 10 schools competed in the tournament.

The EMU team finished the tournament with 221 sweepstakes points to second-place Oakland University's 109 points and third-place Central Michigan University's 98 points. The EMU forensics team has now won the state title the last 12 consecutive years.

Please Notify Us In Advance of Any Change in Address




One smooth shaft.

GS-850G

- DOHC, 4-cylinder, 4-stroke engine.
- Smooth shaft drive.
- Automatic cam chain tensioner.
- Transistorized ignition.
- Electric starting.
- 5-speed transmission.
- Triple slotted disc brakes.
- Adjustable air forks.
- Multi-adjustable rear shocks.
- Large capacity fuel tank.
- Self-cancelling turn signals.
- Cast alloy wheels.
- Halogen headlight.
- 1981 "GS" model 12-month unlimited mileage warranty.

*See "Limited Warranty" brochure for details.

Suzuki 1981 The Performer.

RAMPY
CHEVROLET/SUZUKI
3515 Jackson Rd. at Wagoner
PHONE 443-3321

MONROE SHOCK SALE

We guarantee satisfaction on all Monroe shocks we sell . . . If you are not satisfied we will give you your money back or trade you for heavier shocks . . .

GRIPPER

Monroe's best shock value.



MONROE GRIPPERS

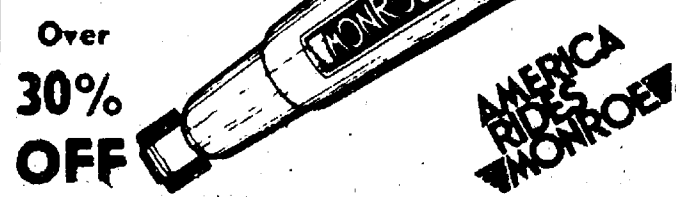
These are heavy duty shocks and meet or exceed manufacturer's specifications . . .

MONROE-MATIC SHOCKS

These shocks are extra heavy duty, nearly 35% heavier than original equipment shocks.

Monro-Matic

America's best seller!



RADIAL-MATIC

A great ride at a great price.



RADIAL-MATIC SHOCKS

These shocks are intended for use on heavier cars using radial tires. They are designed to stop radial sway. They are a premium quality shock.

MONROE-MAGNUM SHOCKS

These are the heaviest shocks obtainable for trucks, 4-wheel or 2-wheel.

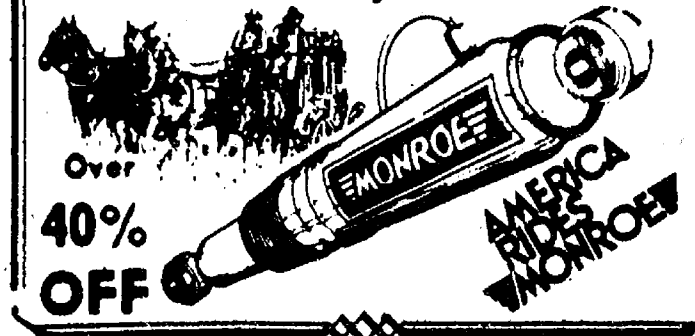
Monro-Magnum

For firm and stable truckin'



Max-Air

The air adjustable shock.



MONROE MAX-AIR AIR SHOCKS

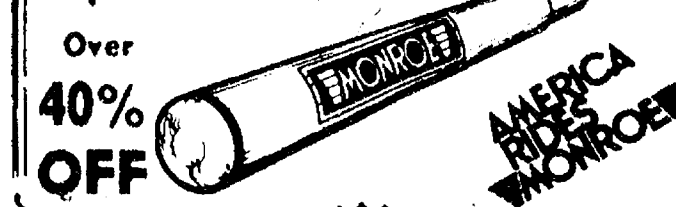
Don't compare these with most cheaper air shocks being sold . . . These are 150 lb. capacity, heavy-duty air shocks . . .

McPHERSON STRUT Replacement Cartridges

Heavy duty units for all cars using this type of suspension. We rent the tool to install them.

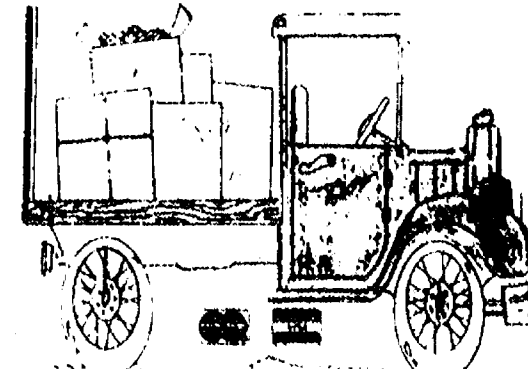
MacPherson Strut

Monroe's replacement cartridge. Improved ride and control for imported cars.



The PARTS PEDDLER

AUTO SUPPLY STORES, INC.



Dexter
426-4688

Chelsea
475-9106 • 475-1366

Whitmore Lake
449-4312

HOURS

MAIN STORE
(1414 S. Main, Chelsea)
Open Sundays 10-2

BRANCH STORES
Open Daily 8:30 a.m. - 5:30 p.m.
Saturdays 8:30 a.m. to 4 p.m.

Quality Automotive Parts
Equipment & Accessories
At Competitive Prices

Ask about our
do-it-yourself
discounts.

COUPON

LUCKY BUCK
\$1.00 OFF
Every \$5.00 Dry Cleaning
(COUPON EXPIRES 5-5-81)

QUALITY CLEANING - SHOE REPAIR
SUEDE & LEATHER SERVICE
EXPERT ALTERATIONS
One-Day Service on Request

DEXTER QUALITY CLEANERS
8122 Main St., Dexter Ph. 426-8653

COUPON

WITH COUPON
(Offer good until 4-30-81)

SPECIAL IN OUR TRAVEL STORE

\$2.00 OFF
SUNGLASSES

Valid only at Wolverine Auto/Truck Stop with coupon

SATURDAYS SPECIAL

2 p.m. til 10 p.m.

ALL YOU CAN EAT SPAGHETTI DINNER

Enjoy all you want, served with
cole slaw and garlic toast for **\$1.99**
only

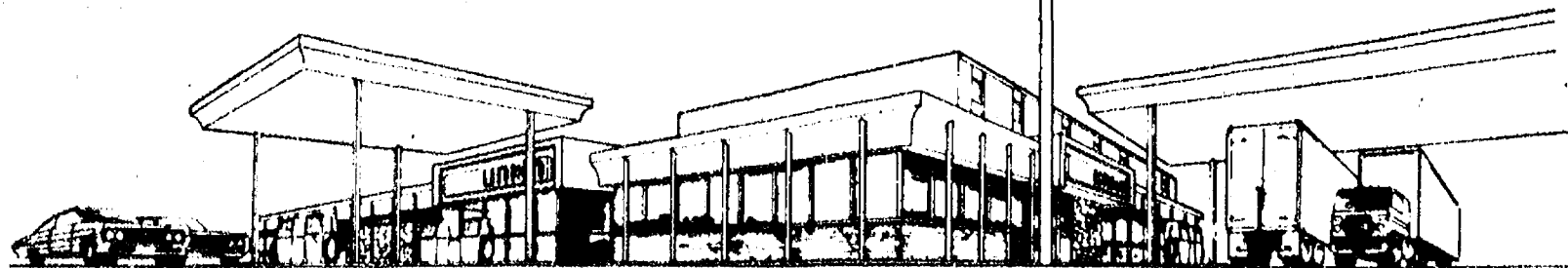
**Have a Light Breakfast with us every day
from 6 a.m. til 11 a.m.**

Come in and enjoy a grapefruit half, bowl of cereal,
toast and coffee for only **\$1.69**

Where can you eat better for less?



Open 24 Hours
A Day



WOLVERINE TRUCK PLAZA

1-94 & BAKER RD., DEXTER



SPREADING EASTER CHEER was this group of Jaycee members from the Cassidy Lake Technical School. Late Friday afternoon, the group, accompanied by treatment director Tom Mann, second from left, visited three young pa-

Easter Treat for Burn Patients

As a Jaycee community service project for National Burn Prevention Week, the Cassidy Lake Technical School Jaycee chapter purchased three ready-made Easter baskets from Chelsea Pharmacy and presented them to three youngsters currently undergoing burn treatment in the Chelsea Community Hospital Burn Unit Friday afternoon, April 17.

After contacting hospital administrator Willard Johnson and the head of nursing and receiving endorsement of the idea, Tom Mann, Cassidy Lake treatment director, and the 23-member Cassidy Lake Jaycees organized the project.

The Easter baskets were given an added touch when Chelsea Pharmacy contributed three chocolate Easter bunnies and three one and one-half foot tall stuffed Easter bunnies for the hospital patients.

The Cassidy Lake inmates hand-made Easter cards for the youngsters and attached them to the baskets, which had been purchased with money earned at the school. Taking the Easter baskets and stuffed toys to the hospital Friday afternoon, the Cassidy Lake Jaycees were greeted with enthusiasm and excitement as one young burn patient clutched the stuffed rabbit

to his chest and said, "Thank you, people."

Discount Tickets Available for Amusement Parks

Discount tickets are now available for both Chelsea and area residents for use at Cedar Point, Kings Island and Seaworld amusement parks. These tickets are available at the Community Education office between the hours of 9 a.m. and 4 p.m. and persons are asked to phone ahead prior to picking up tickets.

Tickets for Cedar Point are available at a cost of \$9.75 each, for both children and adults for a savings of \$1.20. The same prices and savings apply to the purchase of tickets for Kings Island. Seaworld tickets offer the buyer a savings of \$2.30 per ticket. The cost is \$6.45 for both children and adults.

Stroke Clinic

(Continued from page one) are taught technique, strategy, conditioning and appreciation for the sport.

Registration must be done at the pool on or before Monday, April 27 and the program runs on Mondays and Wednesdays until June 3 at a cost of \$15 for a Chelsea resident and \$20 for a non-resident.

In 1795 the first collective bargaining agreement in the U.S. was obtained by Philadelphia printers, according to "Labor First in America," a publication of the U. S. Department of Labor.

Fair Board Notes

The regular Fair Board meeting was called to order by president Jerry Heydlauff, Thursday evening, April 16. Other officers present were A. Steinaway, vice-president; M. Guenther, secretary; K. Poljan, treasurer; and L. Grau, fair manager.

Directors present were D. Poljan, F. Renton, A. Bradbury, H. Gross, J. Herrick, G. Houle, J. Klink, J. Layher, R. Lesser, Jr., M. Stapish, C. Stapish and B. Stoffer. Keith Gafner, swine superintendent, and John Wellnitz were in attendance.

The secretary's report and treasurer's reports were read and accepted.

The majority of the meeting was devoted to allocation of duties to be carried out prior to the Aug. 25-29 Chelsea Community Fair. These included small arena fences and saw horses for the rabbit and chicken pens to sit upon.

Sand will be spread on the main arena floor in preparation for the horse show. The installation of fans inside buildings to provide better ventilation was discussed.

Senior Citizen Center Staffed By Volunteers

Chelsea Senior Citizen program is offered to the older residents of the community through a joint effort of the Chelsea School District, Chelsea Kiwanis Club, Chelsea Community Hospital and Chelsea Recreation Department.

The Chelsea Senior Citizen Activity Center is located at 134 W. Middle St. and is open to the public Monday through Friday from 1-4 p.m.

Daily activities at the Center are numerous and varied. On Mondays, visitors at the Center may participate in a discussion of antiques, play bingo or work with stained glass. Tuesdays find the persons enjoying a game of euchre.

Wednesdays at the Center offer participants courses in senior fitness, bowling and ceramics. Bazaar preparation and bridge highlight the activities at the Senior Citizen Center on Thursdays while Friday offers a different special activity each week.

Monthly special events include field trips, Friday night special events, pot-luck meals, birthday parties, Men's Day and blood pressure clinics.

The Chelsea Senior Citizen Activity Center is staffed solely by volunteers who work in committee situations. Persons interested in volunteering their time and/or services are encouraged to contact the Center at 475-9242.

Persons, age 50 or older, who would like to receive the Center's

Summer Ball

(Continued from page one) actual birthdate. Because of the large numbers of children involved in this program, no registration will be held following April 25.

Parents with more than two children in the baseball program will be given a discount on the specified fees. Partial scholarships are also available to low-income families.

Telephone your club news to 475-1371

Special Spring Bonus



BoWellCo buildings are a great value any time of the year, but right now they're exceptional. Because we're giving away a valuable Spring Bonus with every building sold, to keep our construction crews busy through the spring season. This Special Bonus applies to all buildings, all models and sizes. Offer ends May 2nd, 1981, so call today and talk to a BoWellCo planning specialist about the building you need.

CALL COLLECT TODAY (419) 592-0966

BoWellCo Buildings, Inc.

Highway 424 East • Napoleon, Ohio 43545 • (419) 592-0966

MORE THAN 25 YEARS EXPERIENCE IN POLEFRAME BUILDING CONSTRUCTION

Subscribe to The Chelsea Standard

PITTSBURGH PAINTS SPRING PAINT-UP SALE



Buy Now - Save \$4 per gal.

**WALLHIDE LATEX
FLAT WALL PAINT** Now Only **\$10⁷⁴**

White and Pastel Colors only.

**SATINHIDE LO-LUSTRE
LATEX ENAMEL** .. Now Only **\$14⁷⁴**

White and Pastel Colors only.

CHELSEA HARDWARE

110 S. Main St., Chelsea

Ph. 475-1121

OPEN SUNDAYS

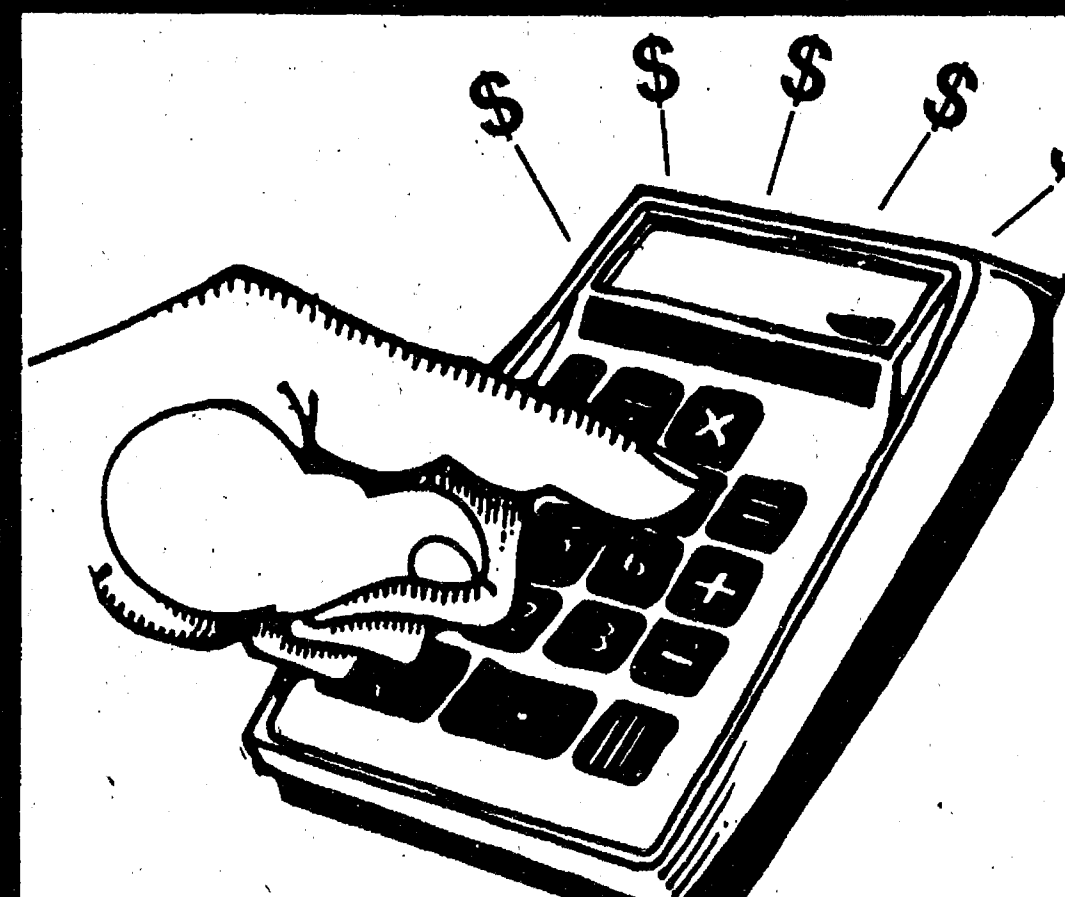
10 a.m. to 2 p.m.

MAIN STORE ONLY

1414 S. MAIN ST., CHELSEA

Phone 475-9106

**The PARTS
PEDDLER**
AUTO SUPPLY STORES



Interest Earning Checking Pays Off... Add it up!

No matter which way you add it... forward or backward... up or down... an interest earning N.O.W. checking account has the features that really pay off. You know where every dollar was spent with the assistance of your checkbook

register. You have the opportunity to enjoy the convenience of having all your ready cash in one account and you'll be amazed at how the monies left in your N.O.W. account continue to build with the interest it earns. In addition,

should you fall below the required minimum balance, your money continues to earn interest regardless and you pay just a small service charge. For complete details, check with the checking professionals... US.

Open your N.O.W. account with the checking professionals... US!

CSB CHELSEA STATE BANK

Member F.D.I.C.

305 South Main/475-1355

We've got a sundae smile for you



Special **25¢** Every Day

in three flavors.

Thick vanilla swirls covered with buttery Hot Fudge. Tasty Caramel. Or luscious Strawberry topping. McDonald's®

Sundaes are so rich and creamy they'll make you smile when you eat one. So come in for a McDonald's Sundae. And smile.

Nobody can do it like McDonald's can.™



1535 S. Main, Chelsea Ph. 475-9620

Why take a chance?

If income per acre is important to you, you shouldn't plant anything other than the brand that has consistently proven itself superior... Pioneer brand seed corn. Pioneer hybrids have the track record... they are the proven winners in yield, in low-moisture at harvest, in income per acre. Call me now to reserve the proven, dependable Pioneer brand hybrids you'll want for next year.



KEITH BRADBURY

PH. 475-8316
10065 EASTON RD.
DEXTER, MICH.



PIONEER
BRAND SEEDS

*Registered trademark of Pioneer Hi-Bred International, Inc., Des Moines, Iowa, U.S.A.



Real Estate

By PAUL FRISINGER

REALTOR

RE-ROOFING NOT FOR AMATEURS

For a long time, the slogan of REALTORS has been: "Under all is land." Just as important, is the phrase for home ownership referred to as "Roof over your head." You are more apt to have problems with the latter.

Re-roofing is no job for an amateur. It may look simple to the uninitiated, but re-roofing involves judgment that calls for more than lining up shingles and nailing them down. If you're not sure of what you're doing, it can result in wasted materials and effort. A homeowner may discover that an amateur job costs more than a professional one because a bungled job may have ruined the materials and have to be

redone by an expert using new materials.

Re-roofing also involves other considerations—whether to tear off the old roofing material or apply a new roof over the old one. Also, there is a very important element of safety. For the amateur roofer, no job around the house hurts more than falling off a roof.

If there is anything we can do to help you in the field of real estate, please phone or drop in at FRISINGER REALTY CO., 935 S. Main St., Chelsea. Phone: 475-8681; evenings 475-2621. We're here to help!

Child Care Center Plans Summer

Beginning in June, Chelsea Community Hospital Child Care Center will be offering a special summer program for children ages five through 10 years. The program will consist of both educational and recreational activities and will continue through the summer until school begins in the fall.

Each child will be provided with opportunities to find satisfaction in the completion of various jobs and activities. They will be allowed to assume responsibility, appropriate to their age and development, in planning, carrying out and evaluating different tasks.

Gardening is a special project that will provide an excellent learning experience for the older children. The children will learn about the gardening process—preparing the soil, planting, watering, cultivating and harvesting.

Other activities will include nature walks, lunches at Pierce Park, running through the sprinkler and jogging along the exercise trail.

The Center is open from 6:30 a.m. to 5:30 p.m. Monday through Friday and is located at St. Paul United Church of Christ, 14600 Old US-12 in Chelsea. Further information may be obtained by contacting Corinne Childs or Kathy Youmans at 475-1920.

South School PTS Will Hear Supt.

At Thursday Meeting

The South school general meeting sponsored by the Parent-Teachers South, will be held at 7:30 p.m. Thursday, April 23 in the South school cafeteria.

Raymond Van Meer, superintendent of schools, will be the guest speaker and will discuss the millage renewal, curriculum and operations. A question and answer period will follow.

The public is invited to attend this meeting and babysitting will be provided.

The Chelsea Standard

Section 2

Chelsea, Michigan, Tuesday, April 21, 1981

Pages 9-16



MCTM MATH COMPETITION: The Michigan Council of Teachers of Mathematics sponsored a state-wide math competition for junior high and middle school students. Qualifying finalists representing Beach Middle school included, front row, left to right, Steve Kropf, Steve Petty and Gary Callison; back row, left to right,

Mary Ann Richardson, Mark Pletcher and Crystal Porath. Following the Saturday, April 11 competition 6th grader Steve Petty, 7th grader Gary Callison and 8th grader Steve Kropf ranked in the top 25 in their grade levels.

Three Beach Pupils Qualify For State Math Competition

The Michigan Council of Teachers of Mathematics is once again sponsoring a state-wide math competition for junior high and middle school students. Participating schools select students for regional and state competition.

At Beach Middle school, more than 300 students volunteered to take the first test. Forty questions involved all aspects of math ability from addition of three numbers to geometric formulas. The tests were scored and the students with the highest scores were recognized at school and given a certificate of merit.

The two top scorers in each grade were chosen to represent Beach school at the regional competition held at Lansing Community College on Saturday, April 11. Sixth graders Mark Pletcher and Steve Petty; seventh graders Gary Callison and Crystal Porath and eighth graders Steve Kropf and Mary Ann Richardson did a fine job representing Chelsea. This was the third year that Steve and Mary Ann were the top students at their grade level.

After the tests were scored, the awards ceremony was held and the top 25 scorers in each grade level were announced. These students will attend the state competition on Saturday, May 16

at Central Michigan University in Mt. Pleasant.

The 24 Chelsea people in attendance cheered loudly when Steve Petty, Gary Callison and Steve Kropf all ranked in the top 25. Steve Kropf has qualified and attended the state competition for three consecutive years while Mary Ann Richardson has qualified for the past two years.

Pinckney Area Community Market Slated for Summer

Pinckney Area Historical Society has announced it plans to sponsor a Community Market for Saturdays, from 7:30 a.m. until 2 p.m., beginning May 25, which is the Saturday of Memorial Day week-end, and continuing through the summer.

The market will be located at the old Depot building on Howell Rd., on the north side of Pinckney. The cost will be \$5 each day of participation. Pre-registration is welcome but not required, since at least to begin with there will be no limit to the number of vendors. Anyone who wishes to talk about the proposed venture may call Jane Tasch at 878-9951 or Helen VanBlaircum at 878-3021.

CONVENIENCE & FLEXIBILITY!

MONTHLY OR QUARTERLY INTEREST PAYMENTS ON YOUR SAVINGS CERTIFICATES

26-WEEK MONEY MARKET CERTIFICATE (Minimum deposit \$10,000)

INTEREST PAID AT MATURITY OR:

- Paid monthly by check directly to you
- Deposited monthly into your Ann Arbor Trust checking account
- Deposited monthly into your Ann Arbor Trust savings account where it will earn 5.25% interest compounded continuously for an effective annual yield of 5.467%.

30-MONTH CERTIFICATE OF DEPOSIT (Minimum deposit \$1,000)

INTEREST COMPOUNDED AND PAID QUARTERLY OR:

- Paid quarterly by check directly to you
- Deposited quarterly into your Ann Arbor Trust checking account
- Deposited quarterly into your Ann Arbor Trust savings account where it will earn 5.25% interest compounded continuously for an effective annual yield of 5.467%.

Call 475-9154
for current rate

%

11.75 %

Rate changes every Tuesday.

current rate effective April 14 thru April 27

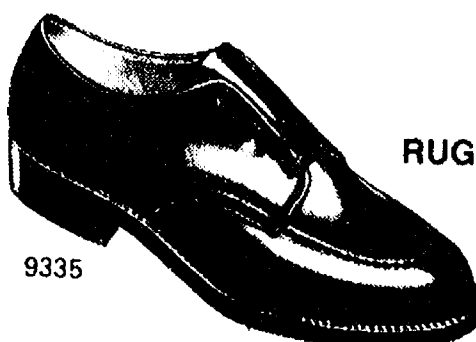
The penalty for withdrawal of funds from a time deposit before its maturity will be an amount equal to three months simple, nominal interest when the original maturity is one year or less, and six months simple, nominal interest when the original maturity is longer. Federal Regulations prohibit the compounding of interest on Money Market Certificates.

Your deposits are insured to \$100,000 by the Federal Deposit Insurance Corporation.



ANN ARBOR TRUST
THE BANK OF TRUST
CHELSEA BANKING OFFICE • 475-9154
1478 Chelsea-Manchester Road • Member FDIC

Foot tourists: You've earned your Wings!



**RUGGED SHOES
FIT FOR
WORK OR
LEISURE**

If you are...

TOURING AN ART GALLERY, BALLPARK, COUNTY FAIR, DOG POUND, EUROPE, FISHING WHARF, GARAGE SALE, HOUSING COMPLEX, INDIAN RESERVATION, JOCK SHOP, KITE FACTORY, LIBRARY, MUSIC FESTIVAL, NEWSPAPER PLANT, OBSERVATORY, PLANT OPENING, QUEEN CONTEST, RAILROAD EXHIBIT, STATE FAIR, TRADE SHOW, UNIVERSITY, VAN PIRE CASTLE, WAX MUSEUM, XYLOPHONE FACTORY, YACHT DISPLAY, ZOOLOGICAL GARDEN, APPLE ORCHARD, BREWERY, COURTYARD... OR JUST PLAIN WALKING ANYWHERE!

#9335—Top seller! Moccasin style toe, cellulose cushion insole with inside arch lift, Neoprene cushion crepe soles and heels, all-around Goodyear welt.

RED WING SHOES

Red Wings
FOSTER'S
MEN'S WEAR

Varsity/JV Softball Schedule

April 22—Tecumseh	A	4:30
JV Tecumseh	H	4:30
April 24—Dexter	H	4:30
JV Dexter	A	4:30
April 25—Pioneer	H	10:00
JV Pioneer	A	11:00
Groves	H	2:00

Coach: Charles Waller

CHS Girls Track Schedule

April 21—Napoleon	A	4:30
April 23—Tecumseh	A	4:30
April 24—Chelsea Relays	H	4:00
April 28—Dexter	H	4:30
April 30—Milan	A	4:30
May 1—Mason Invit.	A	4:00
May 5—Fowlerville	H	5:00
May 7—Lincoln	H	5:00

Coach: Bill Bainton

Boys Track Schedule

April 21—Napoleon	A	4:30
April 23—Tecumseh	H	4:30
April 28—Dexter	A	4:30
April 30—Milan	H	4:30
May 1—Mason Invit.	A	4:00
May 5—Fowlerville	H	5:00

Coach: Pat Clarke

Tennis Schedule

April 21—Novi	A	4:00
April 23—Saline	H	4:00
April 27—Northwest	A	4:00
April 29—Gabriel Richard	A	4:00
May 1—Stockbridge	H	4:00
May 4—Williamston	A	4:00
May 8—Pinckney	A	4:00

Coach: Terri Schreiner

Girls Track Team Slips Past Saline

The Chelsea girls track team opened the 1981 season with a close, exciting victory over league rival Saline Thursday afternoon, April 16.

The meet was close all the way until the Bulldogs put it away with a 1-2-3 finish in the next to last event, winning the meet, 64-59. Chelsea led after the field events but the Hornets pulled to within one point, 30-29, after the 880 relay; they tied it at 41-all following the 440. Chelsea held a slim 55-54 lead with the two mile and mile relay events remaining.

Sandy Frame ran off with the two-mile in a school record 12:34.4 followed by Kristin Thomas who finished second at 12:41.6. Nancy Hastings, who had already won the mile, finished third to assure the Chelsea victory.

Lorrie Vandegrift was a double winner for Chelsea with a 32-9 shot put and an 18.2 clocking in the 110 hurdles. Other winners for Chelsea were Mary Boylan with a fine 100-foot, 8-inch throw of the discus, Tracy Bohlender in the 220 hurdles and Carol Warren in the 880.

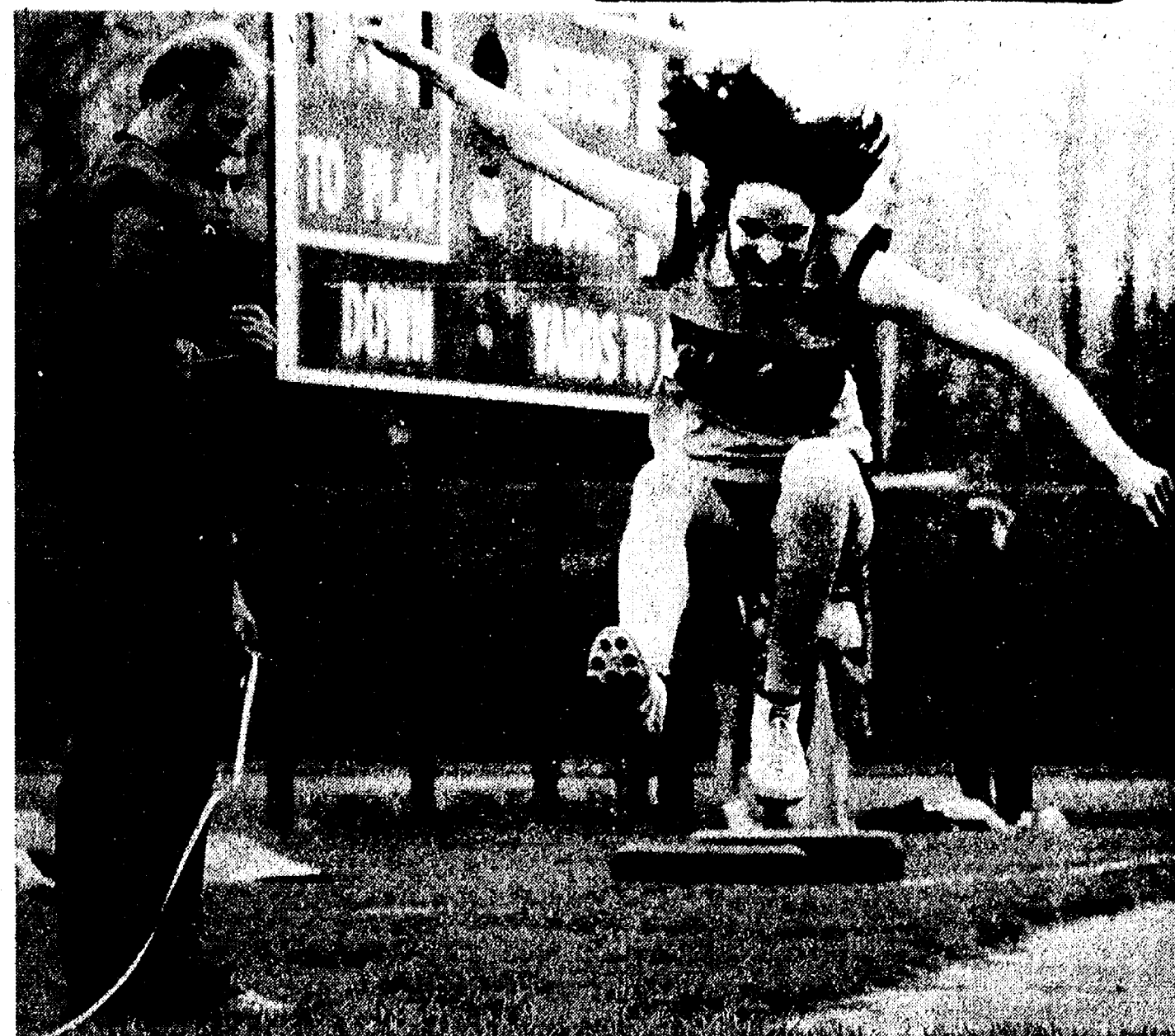
Sue Young had a second in the long jump, and thirds in the 100 and 220. Boylan was second in the shot put as were Kathy Honbaum in the 100, Wendy Wolfgang in the mile, Julie Hunn in the 440 and Nancy Heller in the 880. Bohlender also finished third in the high jump.

Michelle Hall of Saline was a triple winner in the long jump, 100 and 220. Saline also won all three relays.

Chelsea's next meet will be Tuesday, April 21 at Napoleon; the next league meet will be Thursday at Tecumseh.

According to Coach Bill Bainton, "It was a nice win for us, not only because it was our first meet and first league meet of the season but also because it was such a close contest."

The Longshoremen's and Harbor Workers' Compensation Act was enacted in 1927, according to a publication of the U. S. Department of Labor, "Important Events in American Labor History."



JUMPING FOR JOY: Sue Young took second place with her long jump efforts during the Chelsea High school girls track opener Thursday, April 16. In addition to her second place in this

event, Young took third place in the 100 and 220. The lady Bulldog thincalcs slipped past the Saline Hornets to post a 64-59 victory.

2nd, Daren Pierson, :43.4
3rd, Matt McCallum, :44.8
3200 Meters:
3rd, Jeff Bradley, 10:47

200 Meters:
2nd, Ken Bauer, :24.0
3rd, Dave Wojcicki, :24.0

Trackmen Sink Manchester, Power to Win Over Saline

The Chelsea boys track team opened its season Tuesday, April 14 with a 110-22 victory over Manchester.

The Bulldogs were led by double winners, Dave Wojcicki and Daren Pierson. Wojcicki won the pole vault (10'6") and the 100-yard dash (:10.4) while Pierson captured the high jump (5'10") and the 330-yard low hurdles (:42.6).

Junior distance runner Bob Benedict won the mile run on a cold day with a fine time of 4:49.6. Teammate Mark Brosnan followed Benedict to the finish at 4:49.6.

Junior Ken Nicholas, competing in his first track meet ever, unleashed a discus heave of 137'1" to win that event. Todd Sprague threw a lifetime best of 46'3 1/2" to win the shot put, while sophomore Matt McCallum won the 120-yard high hurdles with a lifetime best of :16.0.

"I was very pleased with the effort put forth by our team in their first meet," commented Coach Pat Clarke.

Other Bulldog placers were:

Discus:

2nd, Todd Sprague, 115'9"

Shot Put:

3rd, Bill Freeman, 41'3/4"

High Jump:

2nd, Ray Williams, 5'8"

3rd, Dave Weber, 5'2"

Long Jump:

1st, Ray Williams, 19'3"

2nd, Matt McCallum, 18'5"

3rd, Toby Boyd, 17'11"

Pole Vault:

2nd, Jay Eibler, 10'6"

3rd, Bob Beeman, 10'

120 High Hurdles:

2nd, Mike Hintzen, :16.9

3rd, Ray Williams, :17.1

100-Yard Dash:

2nd, Ken Bauer, :10.6

880-Yard Relay:

1st at 1:41.8, Toby Boyd, Kevin Richardson, Herb Pearson, Ken Bauer.

1-Mile:

3rd, Jeff Bradley, 5:02

440-Yard Dash:

1st, Toby Boyd, :58.6

2nd, Scott Cooper, :59.2

3rd, Dave Lange, :60.8

440-Yard Relay:

1st at :48.4, David Wojcicki, Russ Ramsey, Bill Freeman, Kevin Richardson.

330 Low Hurdles:

2nd, Matt McCallum, :43.6

3rd, Ray Williams, :44.5

880-Yard Run:

3rd, Steve Cattell, 2:24.7

220-Yard Dash:

2nd, Herb Pearson, :25.7

3rd, Scott Cooper/Russ Harris, :26.5

Two Mile Run:

1st, Eric Green, 11:21.3

3rd, Kevin Wahr, 11:43

Mile Relay:

1st at 4:07, Matt McCallum, Mike Hintzen, Mike Marshall, Dave Lange.

Chelsea's young and improving boys track team won a big meet Thursday by defeating Saline at Saline, 75-57. "The team really pulled together and looked impressive," said Coach Pat Clarke. "If we continue to work hard and improve, who knows where we'll end up."

The Bulldog thincalcs were led by sophomore distance ace Mark Brosnan who won the mile (4:37.3) and the two mile (10:02.3). Brosnan's two mile time broke the Chelsea school record by more than 10 seconds.

Another outstanding performance was junior Ray Williams' 20'5" long jump, a lifetime best. Junior distance runner Bob Benedict recorded two lifetime bests in winning the 880-yard run at 2:06.5 and finishing 2nd in the mile at 4:43.0.

Chelsea's outstanding 440 relay looked just that in winning at :45.4. The relay was made up of Dave Wojcicki, Russ Ramsey, Toby Boyd and Ken Bauer.

One other lifetime best was recorded when junior muscle

man Todd Sprague won the shot put at 46'11".

One item of special note was freshman Scott Cooper's effort in the 440-yard run. Cooper cut more than four seconds off his previous best time to finish second with a fine time of :55.1.

The Bulldog tracksters are now 2-0 on the season.

Other Chelsea placers were:

Shot Put:

3rd, Bill Freeman, 39'9"

High Jump:

2nd, Daren Pierson, 5'10"

3rd, Ray Williams, 5'10"

Pole Vault:

2nd, Jay Eibler, 10'6"

3rd, Dave Wojcicki, 10'

Long Jump:

3rd, Matt McCallum

Discus:

1st, Ken Nicholas, 132'10"

3rd, Todd Sprague, 119'6 1/2"

110 M High Hurdles:

2nd, Matt McCallum, :16.6

3rd, Ray Williams, :17.2

100 M Dash:

2nd, Ken Bauer, :11.8

3rd, David Wojcicki, :12.1

800 M Run:

2nd, Dave Kies, 2:08.5

3rd, Bob Schleede, 2:09.7

300 M Low Hurdles:

ROBERTS PAINT & BODY

"We do our best
to satisfy"

20416 Old US-12 West
Chelsea, Mich.

Ph. 475-1149

Open 8 a.m.-5 p.m. Daily

Subscribe to The Chelsea Standard

LITTLE ROOSTER

RESTAURANT & LOUNGE

11485 N. Territorial Rd.

(Corner Dexter Townhall Rd.)

CARRY-OUTS 426-8668

PIZZA - FRIED CHICKEN

Tuesday Special

PRIME RIB DINNER

\$6.95

Served with Tossed Salad
and Ranch Fries
4 to 8 p.m.

Wednesday Special

LADIES NIGHT

1/2 off on all mixed drinks

CHICKEN DINNER

with cole slaw, ranch fries

\$5.45

4 to 8 p.m.

Thursday Special

SPAGHETTI DINNER

\$4.50

All you can eat - 4-8 p.m.

PHONE 426-8668

Tues., Wed., Thurs. 4 to 11:30

Fri. 4-2, Sat. 4-2, Sun. 2-10

FEATURING FINE FOODS

LITTLE ROOSTER

LUNCHES DINNERS COCKTAILS

Friday Special

OCEAN PERCH

DINNER

All you can eat - 4-8 p.m.

\$5.95

Live Entertainment

COUNTRY

PLEASURE

Dancing 9:30-1:30

Saturday Special

10-OZ NEW YORK

SIRLOIN

\$7.95

Served with Tossed Salad

and Ranch Fries

Live Entertainment

COUNTRY

PLEASURE

Dancing 9:30-1:30

Featuring Sunday

SURF & TURF

New Zealand Lobster

Tail - 5-Oz. Sirloin

Steak

Served with Baked Potato,

Tossed Salad

\$12.95

2 to 10 p.m.

MATTOCK'S UPHOLSTERY

DEXTER

Announces

Big

Savings

SOFA \$125 labor, plus fabric

CHAIR \$75 labor, plus fabric

LOVE SEAT \$100 labor, plus fabric

RECLINERS \$85 labor, plus fabric

In-Home Showing of Fabric

Free Pick-Up and Delivery

Ph. 426-4521

FOR TOMORROW, START TODAY

Put a little class in your life.

Enroll in one taught right in
Chelsea, Dexter and Manchester by
Washtenaw Community College

Registration for Spring and Summer credit classes
will take place Tuesday, April 28 from 7:00 to 8:00
p.m. at Chelsea, Dexter and Manchester High
Schools.

Questions? Call us at (313)973-3548.

Classes begin the week of May 11.

Washtenaw Community College

4800 E. Huron River Drive P.O. Box D-1

Ann Arbor, Michigan 48106

WASHTENAW COMMUNITY COLLEGE

SPECIAL

FROG LEGS

With soup and salad bar

\$5.00

Monday, April 20 thru Saturday, April 25

FRIDAY:

FISH & CHIPS ... \$4.25

PAUL BUNYAN RESTAURANT

Phone 662-6641

5510 JACKSON RD. (at Zeeb Rd.)

ANN ARBOR

Ads
Taken
Until
Noon
Monday

PUT IT IN THE

WASHTENAW COUNTY'S BUSY MARKETPLACE

Just
Phone
475-1371

Washtenaw County's Busy Marketplace . . . Quick, Economical Results . . . Give 'em a try!

Automotive 1

PALMER FORD

Now is the Time
To Save!

1980 LTD Crown Victoria (Demonstrator-2)
1980 MUSTANG Ghia 3-dr. (Demonstrator)
1979 FAIRMONT Station Wagon
1979 MUSTANG 2-dr.
1978 LTD 2-dr.
1979 GRANADA 4-dr.
1978 PLYMOUTH Horizon
1978 PINTO 3-dr. (2)
1978 CHEVETTE 5-dr.
1978 FAIRMONT 2-dr.
1978 THUNDERBIRD
1977 DODGE Monaco 2-dr.
1977 CORDOBA
1977 VEGA Station Wag.
1977 CAMERO
1977 PINTO wagon
1977 MAVERICK 2-dr.
1977 MALIBU CLASSIC 4-dr.
1976 MONARCH 2-dr.
1976 VEGA Hatchback
1975 GRANADA 4-dr.
1973 FORD LTD Wagon
1971 FORD Club Wagon
1972 DODGE

Trucks

1979 CHEV C-10
1979 FORD Bronco
1978 COURIER

We Buy Used
Cars & Trucks
At Michigan's
Oldest Ford
Dealer

PALMER FORD

Used Car Lot Open
Mon. & Thurs. 9:00
Saturday 11:00
CHELSEA 475-1800

70 CHEVELLE — 2-door, bucket seats, AM-FM/cassette, engine and drive train in excellent condition. Needs some body work. Best offer. Ph. 663-9192, ask for Dean. x42if

BODY SHOP

COMPLETE FULL TIME
Estimates Available.

PALMER FORD

222 S. Main 475-1301

Automotive 1

Complete Body Shop Service

FREE ESTIMATES
Contact Walter Steinhilb
Formerly of Westland Collision

Faist - Sprague
Buick - Olds, Inc.
475-8664

FIAT STRADA, 1979, excellent condition, air conditioning, AM-FM cassette stereo, all available options, 32 m.p.g. city, 41 highway. \$3,700. Call 475-7033. x46-3
CHEVY SPORT-A-VAN — 1975, good condition. Ph. 475-1783. x46-2
74 PINTO — Rust City, good rubber, mechanical. \$250. Pat Merkel. Phone days 475-9101, evenings 475-1824. x46if
OLDSMOBILE DIESEL — 1979 Delta 4-dr. Air, tilt, FM stereo, cruise, low price, high mileage, good condition. Well maintained salesman's car. \$2,600. Ph. 475-7681. x46-2
79 FORD 1/2-ton pick-up, short bed, fiberglass cap, four speed overdrive. Ph. 996-2506. x46
1975 TRANS-AM — Super clean, silver, Craig stereo. 49,000 actual miles. Rust free, Florida car. 475-1719. x47-2

Motorcycles 1a

1975 KAWASAKI 500 with fairing and some extra parts. Also, 1976 Yamaha 350 with 6-gear overdrive. Both have low mileage, run good, good condition. \$600 ea. or best offer. Call 1-498-3246 for information. x46-2
1980 YZ 125 G — Excellent condition, \$900. Ph. 498-2862. x46-2

Farm & Garden 2

FARMERS — Now taking orders for Vernal alfalfa; pre-inoculated, full 60-lb. bushels; also, Brome and clover seeds, and northern grown Mariner seed oats. Cole's Elevator Co., Inc., Gregory (313) 498-2735. x49-10
TWO NEW IMPROVED horse feeds to choose from. Super Mix and Pleasure Mix. Both made with pure cane molasses. Cole's Elevator Co., Inc., Gregory (313) 498-2735. x48-10
FEED FOR PETS & LIVESTOCK — Softener salt, quantity prices, farm supplies. Boyce Feed, 8275 Jefferson Rd., Brooklyn, Mich. Ph. (517) 992-5627 or (517) 592-2700. x46if
MICHIGAN CERTIFIED SEED — Four varieties of soy beans, \$11.50 per bushel. Brabec Farms, Britton, Mich. 49229. 517-451-4010 or 517-423-5660. x51-4

LUMBER TRUSS INC. POLE BARN

Build and Install
Licensed, References in
your area.

1-(313)-229-6050
Brighton, Michigan

LAWN AND GARDEN FERTILIZERS for spring, 12-12-12 and 16-16-16 for general use. 6-24-24 for potatoes. All purpose line for lawn and garden. Cole's Elevator Co., Inc., Gregory 498-2735. x52-10
SUPER MIX Hog Grower and Finisher. 100-lb. bags. \$9.95. Super Mix Egg Mash, 100-lbs., \$10.95 also. Broiler Mash, 100-lbs. \$12.45. Cole's Elevator Co., Inc. Gregory 498-2735. x52-10
STRAW FOR SALE — 4,000 bales wheat straw, 2,000 cut straw. Excellent quality and color. Good size bales. You pick up or we deliver. Ph. (313) 662-9034. x46-3

Farm & Garden 2

BLACK DIRT AND PEAT MIXTURE — Natural fertility and soil improvement for gardens, flower beds or lawns. Black dirt, also. Self-serve by bushel. Delivered in 5, 7 or 8 yard truck loads, or WE LOAD your trucks. 4200 W. Liberty Rd. farm (between Wagner and Zeab). Ph. 662-5469. x1-10

BLACK DIRT for sale — Tested and proven excellent for gardens and lawns. Six yards delivered. \$40. Ph. 428-7784. x44if

CORN CRIB for sale — 13050 Sager Rd. Ph. 475-2575. x46-2

BLACK DIRT, top soil, fill dirt, sand and gravel. Ph. 475-2722, days; 475-2596 after 6 p.m. C. L. Broderick & Son. x48if

GARDEN TILLING — Have Arians rear-end tiller. Phone for prices and appointments. Ph. 475-7286. x46-2

FRONT-END LOADER, 8N, \$300. Brown and white eggs for sale. Ph. 426-3181. x46-2

HEALTHY RED RASPBERRY plants. Dig your own. 6 for \$1. Ph. 475-9965. x46

JOHN DEERE, model 50-tractor, 3-pk. hitch and hay wagon. Excellent condition. Ph. 475-8052. x46

Recreation Eqt. 3

ROSEBROOK MOBILE HOME — 12'x50', 1974. Two-bedroom set-up in beautiful Coachmen's Cove Trailer Court, Portage Lake. Skirting, new carpeting and appliances. Near beach. Reasonably priced. Available now. Call after 5 p.m. (517) 596-2079 or 596-2459. x47-3
TENT TRAILER — 1978 Starcraft. Sleeps 6 or 8, complete galley and furnace. \$2,500; also, truck camper, 11-ft., self-contained, \$1,200. Lloyd Bridges Traveland, Chelsea. Ph. 475-1347. x46-2

For Sale 4

CARPETING

Discontinued numbers, ends of rolls, in many colors and sizes at cut rate prices. Nearly 100 pieces to select from. MERKEL BROS. x3if

ASHLEY WOODSTOVES — Hackney Hardware, Dexter. Ph. 426-4009. x21if

FIREWOOD CUT and split. Two sizes, face cords and full cords, delivered. Ph. 428-8229. x25if

SEE US for transit mixed concrete. Klump Bros., Gravel Co. Phone Chelsea 475-2530, 4920 Love and Rd., Grass Lake, Mich. x40if

WEDDING STATIONERY — Prospective brides — invited to see our complete line — invitations and wedding accessories. The Chelsea Standard, 300 N. Main. Ph. 475-1371. x8if

SOFA — 7 ft. lime green/yellow print. Good condition. 6 loose cushions. \$60. Call 475-8542. x46-2

SOFA, stereo console, gas Maytag dryer with electronic control. 13378 Old US-12, Chelsea. Ph. 475-2633. x46

PARAMOUNT GUITAR, three-quarter size. Used 3 weeks. \$45. Call 475-7796 between 9 a.m. and 12:30 p.m. or after 5:30 p.m. x46

GAS DRYER with aluminum vent pipe and heat saver vent. Ph. 475-3184. x46

GIRL'S BEDROOM SET, for sale, twin canopy beds, 2 dressers and nightstand. Ph. 475-3184. x46

33 SQ. YARDS CARPETING with pad, very good condition. EP Super I Waterski, excellent condition. Best offers. Ph. 475-9782. x46

36" BICYCLE to sell, excellent condition, foot brakes. May be converted to exercycle. \$50. Ph. 426-8033. x46

DRY CLEAN your carpets with HOST and save. Faster, easier than shampooing. Rent the machine. Merkel Home Furnishings, Chelsea, 475-8621. x46

YOU SAVED and slaved for wall to wall carpet. Keep it new with Blue Lustre. Rent electric shampoo, \$2. Chelsea Hardware. x46

SHERIFF'S AUCTION
Date: 4-28-81.
Time: 10 a.m.-12 noon.
Place: Don's Body's, 7986 Coyle Road, Whitmore Lake, Mich.
Vehicles:
'72 Mazda. VIN: SN3AV101571.
'68 Chevrolet. VIN: 124678N474138.
'70 IHC. VIN: 313108H038010. x46

SHERIFF'S AUCTION
Date: 4-28-81.
Time: 10 a.m.-12 noon.
Place: Wagner's, 8030 Fifth Street, Dexter, Michigan.
Vehicles:
'73 Oldsmobile.
VIN: 3Y57W3M744332.
'73 Ford. VIN: 3W765204504.
'69 Chevrolet. VIN: 136379A314852. x46

SHERIFF'S AUCTION
Date: 4-28-81.
Time: 10 a.m.-12 noon.
Place: Moritz's Towing, 65 Emerick, Ypsilanti, Mich.
Vehicles:
'65 Dodge. VIN: 1181518640.
'70 Pontiac. VIN: 262390P149116.
'72 Mercury. VIN: 2262N564830. x46

SHERIFF'S AUCTION
Date: 4-28-81.
Time: 10 a.m.-12 noon.
Place: Moritz's Towing, 65 Emerick, Ypsilanti, Mich.
Vehicles:
'65 Dodge. VIN: 1181518640.
'70 Pontiac. VIN: 262390P149116.
'72 Mercury. VIN: 2262N564830. x46

SHERIFF'S AUCTION
Date: 4-28-81.
Time: 10 a.m.-12 noon.
Place: Moritz's Towing, 65 Emerick, Ypsilanti, Mich.
Vehicles:
'65 Dodge. VIN: 1181518640.
'70 Pontiac. VIN: 262390P149116.
'72 Mercury. VIN: 2262N564830. x46

SHERIFF'S AUCTION
Date: 4-28-81.
Time: 10 a.m.-12 noon.
Place: Moritz's Towing, 65 Emerick, Ypsilanti, Mich.
Vehicles:
'65 Dodge. VIN: 1181518640.
'70 Pontiac. VIN: 262390P149116.
'72 Mercury. VIN: 2262N564830. x46

SHERIFF'S AUCTION
Date: 4-28-81.
Time: 10 a.m.-12 noon.
Place: Moritz's Towing, 65 Emerick, Ypsilanti, Mich.
Vehicles:
'65 Dodge. VIN: 1181518640.
'70 Pontiac. VIN: 262390P149116.
'72 Mercury. VIN: 2262N564830. x46

SHERIFF'S AUCTION
Date: 4-28-81.
Time: 10 a.m.-12 noon.
Place: Moritz's Towing, 65 Emerick, Ypsilanti, Mich.
Vehicles:
'65 Dodge. VIN: 1181518640.
'70 Pontiac. VIN: 262390P149116.
'72 Mercury. VIN: 2262N564830. x46

SHERIFF'S AUCTION
Date: 4-28-81.
Time: 10 a.m.-12 noon.
Place: Moritz's Towing, 65 Emerick, Ypsilanti, Mich.
Vehicles:
'65 Dodge. VIN: 1181518640.
'70 Pontiac. VIN: 262390P149116.
'72 Mercury. VIN: 2262N564830. x46

SHERIFF'S AUCTION
Date: 4-28-81.
Time: 10 a.m.-12 noon.
Place: Moritz's Towing, 65 Emerick, Ypsilanti, Mich.
Vehicles:
'65 Dodge. VIN: 1181518640.
'70 Pontiac. VIN: 262390P149116.
'72 Mercury. VIN: 2262N564830. x46

SHERIFF'S AUCTION
Date: 4-28-81.
Time: 10 a.m.-12 noon.
Place: Moritz's Towing, 65 Emerick, Ypsilanti, Mich.
Vehicles:
'65 Dodge. VIN: 1181518640.
'70 Pontiac. VIN: 262390P149116.
'72 Mercury. VIN: 2262N564830. x46

SHERIFF'S AUCTION
Date: 4-28-81.
Time: 10 a.m.-12 noon.
Place: Moritz's Towing, 65 Emerick, Ypsilanti, Mich.
Vehicles:
'65 Dodge. VIN: 1181518640.
'70 Pontiac. VIN: 262390P149116.
'72 Mercury. VIN: 2262N564830. x46

SHERIFF'S AUCTION
Date: 4-28-81.
Time: 10 a.m.-12 noon.
Place: Moritz's Towing, 65 Emerick, Ypsilanti, Mich.
Vehicles:
'65 Dodge. VIN: 1181518640.
'70 Pontiac. VIN: 262390P149116.
'72 Mercury. VIN: 2262N564830. x46

SHERIFF'S AUCTION
Date: 4-28-81.
Time: 10 a.m.-12 noon.
Place: Moritz's Towing, 65 Emerick, Ypsilanti, Mich.
Vehicles:
'65 Dodge. VIN: 1181518640.
'70 Pontiac. VIN: 262390P149116.
'72 Mercury. VIN: 2262N564830. x46

SHERIFF'S AUCTION
Date: 4-28-81.
Time: 10 a.m.-12 noon.
Place: Moritz's Towing, 65 Emerick, Ypsilanti, Mich.
Vehicles:
'65 Dodge. VIN: 1181518640.
'70 Pontiac. VIN: 262390P149116.
'72 Mercury. VIN: 2262N564830. x46

SHERIFF'S AUCTION
Date: 4-28-81.
Time: 10 a.m.-12 noon.
Place: Moritz's Towing, 65 Emerick, Ypsilanti, Mich.
Vehicles:
'65 Dodge. VIN: 1181518640.
'70 Pontiac. VIN: 262390P149116.
'72 Mercury. VIN: 2262N564830. x46

SHERIFF'S AUCTION
Date: 4-28-81.
Time: 10 a.m.-12 noon.
Place: Moritz's Towing, 65 Emerick, Ypsilanti, Mich.
Vehicles:
'65 Dodge. VIN: 1181518640.
'70 Pontiac. VIN: 262390P149116.
'72 Mercury. VIN: 2262N564830. x46

SHERIFF'S AUCTION
Date: 4-28-81.
Time: 10 a.m.-12 noon.
Place: Moritz's Towing, 65 Emerick, Ypsilanti, Mich.
Vehicles:
'65 Dodge. VIN: 1181518640.
'70 Pontiac. VIN: 262390P149116.
'72 Mercury. VIN: 2262N564830. x46

SHERIFF'S AUCTION
Date: 4-28-81.
Time: 10 a.m.-12 noon.
Place: Moritz's Towing, 65 Emerick, Ypsilanti, Mich.
Vehicles:
'65 Dodge. VIN: 1181518640.
'70 Pontiac. VIN: 262390P149116.
'72 Mercury. VIN: 2262N564830. x46

SHERIFF'S AUCTION
Date: 4-28-81.
Time: 10 a.m.-12 noon.
Place: Moritz's Towing, 65 Emerick, Ypsilanti, Mich.
Vehicles:
'65 Dodge. VIN: 1181518640.
'70 Pontiac. VIN: 262390P149116.
'72 Mercury. VIN: 2262N564830. x46

SHERIFF'S AUCTION
Date: 4-28-81.
Time: 10 a.m.-12 noon.
Place: Moritz's Towing, 65 Emerick, Ypsilanti, Mich.
Vehicles:
'65 Dodge. VIN: 1181518640.
'70 Pontiac. VIN: 262390P149116.
'72 Mercury. VIN: 2262N564830. x46

SHERIFF'S AUCTION
Date: 4-28-81.
Time: 10 a.m.-12 noon.
Place: Moritz's Towing, 65 Emerick, Ypsilanti, Mich.
Vehicles:
'65 Dodge. VIN: 1181518640.
'70 Pontiac. VIN: 262390P149116.
'72 Mercury. VIN: 2262N564830. x46

SHERIFF'S AUCTION
Date: 4-28-81.
Time: 10 a.m.-12 noon.
Place: Moritz's Towing, 65 Emerick, Ypsilanti, Mich.
Vehicles:
'65 Dodge. VIN: 1181518640.
'70 Pontiac. VIN: 262390P149116.
'72 Mercury. VIN: 2262N564830. x46

SHERIFF'S AUCTION
Date: 4-28-81.
Time: 10 a.m.-12 noon.
Place: Moritz's Towing, 65 Emerick, Ypsilanti, Mich.
Vehicles:
'65 Dodge. VIN: 1181518640.
'70 Pontiac. VIN: 262390P149116.
'72 Mercury. VIN: 2262N564830. x46

SHERIFF'S AUCTION
Date: 4-28-81.
Time: 10 a.m.-12 noon.
Place: Moritz's Towing, 65 Emerick, Ypsilanti, Mich.
Vehicles:
'65 Dodge. VIN: 1181518640.
'70 Pontiac. VIN: 262390P149116.
'72 Mercury. VIN: 2262N564830. x46

SHERIFF'S AUCTION
Date: 4-28-81.
Time: 10 a.m.-12 noon.
Place: Moritz's Towing, 65 Emerick, Ypsilanti, Mich.
Vehicles:
'65 Dodge. VIN: 1181518640.
'70 Pontiac. VIN: 262390P149116.
'72 Mercury. VIN: 2262N564830. x46

SHERIFF'S AUCTION
Date: 4-28-81.
Time: 10 a.m.-12 noon.
Place: Moritz's Towing, 65 Emerick, Ypsilanti, Mich.
Vehicles:
'65 Dodge. VIN: 1181518640.
'70 Pontiac. VIN: 262390P149116.
'72 Mercury. VIN: 2262N564830. x46

SHERIFF'S AUCTION
Date: 4-28-81.
Time: 10 a.m.-12 noon.
Place: Moritz's Towing, 65 Emerick, Ypsilanti, Mich.
Vehicles:
'65 Dodge. VIN: 1181518640.
'70 Pontiac. VIN: 262390P149116.
'72 Mercury. VIN: 2262N564830. x46

SHERIFF'S AUCTION
Date: 4-28-81.
Time: 10 a.m.-12 noon.
Place: Moritz's Towing, 65 Emerick, Ypsilanti, Mich.
Vehicles:
'65 Dodge. VIN: 1181518640.
'70 Pontiac. VIN: 262390P149116.
'72 Mercury. VIN: 2262N564830. x46

SHERIFF'S AUCTION
Date: 4-28-81.
Time: 10 a.m.-12 noon.
Place: Moritz's Towing, 65 Emerick, Ypsilanti, Mich.
Vehicles:
'65 Dodge. VIN: 1181518640.
'70 Pontiac. VIN: 262390P149116.
'72 Mercury. VIN: 2262N564830. x46

SHERIFF'S AUCTION
Date: 4-28-81.
Time: 10 a.m.-12 noon.
Place: Moritz's Towing, 65 Emerick, Ypsilanti, Mich.
Vehicles:
'65 Dodge. VIN: 1181518640.
'70 Pontiac. VIN: 262390P149116.
'72 Mercury. VIN: 2262N564830. x46

SHERIFF'S AUCTION
Date: 4-28-81.
Time: 10 a.m.-12 noon.
Place: Moritz's Towing, 65 Emerick, Ypsilanti, Mich.
Vehicles:
'65 Dodge. VIN: 1181518640.
'70 Pontiac. VIN: 262390P149116.
'72 Mercury. VIN: 2262N564830. x46

SHERIFF'S AUCTION
Date: 4-28-81.
Time: 10 a.m.-12 noon.
Place: Moritz's Towing, 65 Emerick, Ypsilanti, Mich.
Vehicles:
'65 Dodge. VIN: 1181518640.
'70 Pontiac. VIN: 262390P149116.
'72 Mercury. VIN: 2262N564830. x46

SHERIFF'S AUCTION
Date: 4-28-81.
Time: 10 a.m.-12 noon.
Place: Moritz's Towing, 65 Emerick, Ypsilanti, Mich.
Vehicles:
'65 Dodge. VIN: 1181518640.
'70 Pontiac. VIN: 262390P149116.
'72 Mercury. VIN: 2262N564830. x46

SHERIFF'S AUCTION
Date: 4-28-81.
Time: 10 a.m.-12 noon.
Place: Moritz's Towing, 65 Emerick, Ypsilanti, Mich.
Vehicles:
'65 Dodge. VIN: 1181518640.
'70 Pontiac. VIN: 262390P149116.
'72 Mercury. VIN: 2262N564830. x46

SHERIFF'S AUCTION
Date: 4-28-81.
Time: 10 a.m.-12 noon.
Place: Moritz's Towing, 65 Emerick, Ypsilanti, Mich.
Vehicles:
'65 Dodge. VIN: 1181518640.
'70 Pontiac. VIN: 262390P149116.
'72 Mercury. VIN: 2262N564830. x46

SHERIFF'S AUCTION
Date: 4-28-81.
Time: 10 a.m.-12 noon.
Place: Moritz's Towing, 65 Emerick, Ypsilanti, Mich.
Vehicles:
'65 Dodge. VIN: 1181518640.
'70 Pontiac. VIN: 262390P149116.
'72 Mercury. VIN: 2262N564830. x46

SHERIFF'S AUCTION
Date: 4-28-81.
Time: 10 a.m.-12 noon.
Place: Moritz's Towing, 65 Emerick, Ypsilanti, Mich.
Vehicles:
'65 Dodge. VIN: 1181518640.
'70 Pontiac. VIN: 262390P149116.
'72 Mercury. VIN: 2262N564830. x46

SHERIFF'S AUCTION
Date: 4-28-81.
Time: 10 a.m.-12 noon.
Place: Moritz's Towing, 65 Emerick, Ypsilanti, Mich.
Vehicles:
'65 Dodge. VIN: 1181518640.
'70 Pontiac. VIN: 262390P149116.
'72 Mercury. VIN: 2262N564830. x46

SHERIFF'S AUCTION
Date: 4-28-81.
Time: 10 a.m.-12 noon.
Place: Moritz's Towing, 65 Emerick, Ypsilanti, Mich.
Vehicles:
'65 Dodge. VIN: 1181518640.
'70 Pontiac. VIN: 262390P149116.
'72 Mercury. VIN: 2262N564830. x46

SHERIFF'S AUCTION
Date: 4-28-81.
Time: 10 a.m.-12 noon.
Place: Moritz's Towing, 65 Emerick, Ypsilanti, Mich.
Vehicles:
'65 Dodge. VIN: 1181518640.
'70 Pontiac. VIN: 262390P149116.
'72 Mercury. VIN: 2262N564830. x46

SHERIFF'S AUCTION
Date: 4-28-81.
Time: 10 a.m.-12 noon.
Place: Moritz's Towing, 65 Emerick, Ypsilanti, Mich.
Vehicles:
'65 Dodge. VIN: 1181518640.
'70 Pontiac. VIN: 262390P149116.
'72 Mercury. VIN: 2262N564830. x46

CLASSIFIED ADVERTISING RATES

20 words or less \$1.00
Over 20 words, 5¢ per word
(When payment accompanies order;
add 75¢ if charged)

CARD OF THANKS
50 words or less \$2.50
Over 50 words 5¢ per word
(When payment accompanies order;
add 75¢ if charged)

Deadline for ads in
classified section is 4 p.m.
Saturday. Copy received be-
tween 4 p.m. Saturday and
noon Monday may appear
under a separate heading on
another page.

\$1.00 charge for tear-<

LITTLE WANT ADS! BIG PLUSES FOR BIG RESULTS!

Real Estate	5 Animals, Pets	6 For Rent	11	Bus. Services	13	Bus. Services	13	Bus. Services	13	Bus. Services	13
CHELSEA AREA BRAND NEW HOME 12% INT. * SELLING PRICE \$63,900. * DOWN PAYMENT \$12,800. * MONTHLY PAYMENT \$524. Taxes and insurance not included. CALL NOW 475-2828 475-9258 475-2734 461f OPEN HOUSE SAT. & SUN. 2 - 5 p.m. OWNER OFFERS FINANCING Anxious owner says "sell," and will finance this house at 11% for you. Drive by: 19505 Old US-12 West and call today for an appointment to see the inside. Home has four bedrooms, family room with fireplace, deck off master bedroom, sliding glass doors. Very efficient 4-zone hot water heat. Low township taxes. This combination of "country" and "convenience" are hard to find. Chelsea schools. Sharon B. Roberts, Realtor Office 475-8348, Home 475-9258 x46 WATERLOO REALTY OPEN HOUSE Sunday, April 26 1-4:00 p.m. 12890 Trist Rd. Attractive older 4-bedroom home on 10 acres. Large living room with fireplace, formal dining room, enclosed porch. Approx. 2,900 sq. ft. of living area. 2 1/2-car garage. Corral for horses. Waterloo Rec Area. \$89,500. 15 min. W. of Chelsea. OPEN HOUSE Sunday, April 26 1-4:00 p.m. 223 N. Main St. Munith. Beautiful older 4-bedroom home. New insulation, plumbing, wiring. Natural oak woodwork and floors throughout. 1 1/2 baths, den or study, formal dining room. Enclosed porch. Excellently maintained and decorated. 3-car garage with walkable attic. A MUST TO SEE! On 3 lots in Village. \$75,000 Land Contract terms poss. WATERLOO REALTY 355 Clear Lake JOANN WARYWOOD, BROKER Phone 475-8674 Evenings and Sundays Carol Warywood 475-2377 Sue Lewie 1-517-522-5252 x461f AT CLEAR LAKE — We have two properties for sale on Clear Lake. One is a year-round cottage with full basement, big living room-dining room area, kitchen, bedroom and large sleeping deck. Approximately 1/2 acre of land, priced at \$57,900. We also have a smaller trailer/cottage priced at \$26,500. It has approximately 1/2 acre and is well situated overlooking the lake. More room here than you would guess and it can be used year round. For an appointment, Ph. 1-484-1111. x21f HOMES FOR SALE OR TRADE — Large home in Village of Chelsea, can be easily converted to duplex. Cavanaugh Lake, newer 3-bedroom home, beautiful setting. Will consider any type of real estate or land contracts for trade. P&R, Inc., 475-9101. Evenings, 475-1469. x29f	WOODSTOCK KENNELS 18531 Bush Rd. Ph. 475-1794 Inside and Outside Heated Runs Separate Housing for Cats Love Provided Free 301f FOR INFORMATION ABOUT , or to make an appointment with The Humane Society of Huron Valley Spay and Neuter Clinic please phone (313) 662-4365, 10 a.m. to 4 p.m. Monday through Friday. x381f TENDER LOVING CARE for your pet in my home while you're away. Call 475-8953. Ask for Krista. -46-5 Lost and Found 7 FOR LOST OR FOUND PETS — Phone The Humane Society of Huron Valley at 662-5585 between 11 a.m. and 5 p.m. Sunday through Saturday; closed holidays. 3100 Cherry Hill Rd., Ann Arbor. x381f LOST — Ladies glasses, tortoise shell rims. Lost by St. Mary's school. Tuesday, April 14. Ph. after 5 p.m., 475-8207. -46 Help Wanted 8 SETTING UP INTERVIEWS for positions in expanding business. Income and hours flexible. Call weekdays, 9 to 5. Ph. 475-1684. -46-12 TZ Associates — If you want to earn substantial extra income. Please contact 475-1267 after 6 p.m. x47-3 HOUSEKEEPER wanted. Will pay by the hour or exchange services for riding lessons. Call 475-7449. -48-4 SELF-SERVE gas station needs responsible people for cashier position. Full- and part-time, afternoons and midnight. Experience helpful but not necessary. Please apply in person. Chelsea Speedway, Fletcher Rd. and I-94. x47-2 Set Up and Operate Screw Machines Brown & Sharps, Acme-Gridley and Greenlees. Minimum 5 years experience. Call for an appointment. 475-8626 Equal Opportunity Employer W. A. Thomas Co. 1035 N. Fletcher Rd. Chelsea, Mich. 48118 x47-2 CHURCH SECRETARY , St. Paul United Church of Christ, Chelsea; part-time (approximately 15 hrs. a week). Call: 475-2545 or 475-2894 for appointment. 19001 - 391212 W3/46 HELP WANTED — Part-time cleaner and inspection. Chelsea Cleaners. Ph. 475-1133. -46 JOURNEYMAN LINEMAN — Village of Chelsea, pop. 3,800. Duties include maintenance and additions to municipal owned electrical distribution system, and meter reading. Salary negotiable. Resume and salary requirements to: Village Administrator, Chelsea, Michigan 48118. -47-2 Baby Sitter 9 CHILD CARE — Now accepting applications for full and part-time openings. Group day care home with nursery school-type program within the Village of Dexter. Evening care also available. Ph. 426-8378 or 662-1814. x46-2 RELIABLE PERSON wanted to babysit in Half Moon Lake area. Call Barb, 475-2929. -46 CHILD CARE — Mother of 4 1/2-year-old girl would like to babysit other children in my home between Chelsea and Manchester. Any age. 475-1070. -49-4 Wanted 10 OLD BARN YARD dinner bell or small, old school bell. Ph. 971-6977 anytime. x46-3 TOOL BOX and tools, wrenches, sockets, etc. Ph. 426-2075 from 9 a.m. to 1 p.m. -x46 Wanted to Rent 10a COTTAGE wanted to rent immediately on Cavanaugh or Crooked Lake, Chelsea area. Ph. 1-722-1299. x31f	ROOMS by day, week or month. Excellent for the single man or retiree. Sylvan Hotel, Chelsea. Ph. 475-2911. x311f FOR RENT — Fair Service Center for meetings, parties, wedding receptions, etc. Weekdays or weekends. Contact John Wellnitz, phone 475-1518. x311f CAR RENTAL by the day, week-end, week or month. Full insurance coverage, low rates. Call Lyle Christwell at Palmer Motor Sales. 475-1301. -251f 4 BEDROOM HOUSE , 12 miles south of Chelsea on Pleasant Lake Rd. Ph. (313) 428-7573. x501f FOR RENT — Chelsea Rod & Gun Club building for rent, for parties, meetings, receptions, etc. Contact Al Keezer, 475-8893, weekends and evenings. -8-26 3-BEDROOM , full basement, on acreage. \$400 per month. Realty World Brigran, Inc. Ph. 1-485-0500. x431f For Rent To Responsible Persons BEAUTIFUL COUNTRY HOME on 7 rolling acres. Located 8 miles south of Chelsea (and I-94) and 4 miles north of Manchester. 5 bedrooms, 2 full and 2 half baths, living room, dining room, family room with full-wall brick fireplace, first floor laundry, kitchen with dining area, AM-FM intercom, full basement and 3-car attached garage. Available May 1st. PLEASE WRITE: FRANCIS CAPPAERT Box 671 Troy, Michigan 48099 x47-3 TWO APARTMENTS in Chelsea — \$300 and \$250. Classic turn-of-the-century, brick, redecorated, new carpeting, deck. No pets. Ph. 426-3713. x46-2 2-BEDROOM year-round home near Bruin Lake Campgrounds, Stockbridge School District. Lake access, partially furnished, gas heat, 1st and last months rent. \$250 per month plus utilities. Ph. 426-8870 after 6 p.m. or 426-2426 after 10 p.m. x46-2 FURNISHED 1st floor apartment, carpeted, full basement, yard. Married couple only. References required. Ph. 475-2018. x331f CHOICE 2-BEDROOM apartment, heat furnished, married couples only. References required. Ph. 475-2018. x331f OFFICE SPACE for rent on Main St. in downtown Dexter. Ph. 426-2522. x351f AMERICAN LEGION HALL Rental — \$100-\$175. Ph. Lena Behnke, 475-9231, evenings and week-ends. x41f 2-BEDROOM apartment in Chelsea — \$290 per month, heat and water included. Ph. 475-8483. x441f APARTMENT FOR RENT — Upstairs unit, newly decorated, one bedroom. Rural location 5 miles west of Chelsea. Partial heat provided. \$215 per month plus deposit. Please phone 475-7681. -x46 FOR RENT — Village of Chelsea, 3-bedroom, 1 1/2-baths, walk-out basement double garage, 1/2-acre lot. \$500. Ph. 429-4062. x47-2	Carpentry/Construction 13b CARPENTRY WORK — Remodeling, siding, roofing, cement work, reasonable rates. Call Jim Hughes at 475-2079 or 475-2582. x141f Custom Built Homes O—hi We Remodel too U—can count on us N—a Job Too Small T—rim Inside and Out R—ough-in Only if Y—ou want to Finish S—iding Aluminum, 5" Gutters I—mmediate Attention D—ALE COOK & CO. E—stimates, Free BUILDERS Please Call 475-9153 DALE COOK DRYWALL APPLICATION — Hanging, finishing, spray texture remodeling and new work a specialty. Ph. 665-3452. x341f HOUSES ROUGH-IN or trimmed out. Roofing. Free estimates. Joe Birchner. Ph. 426-3106. x46-4 J. R. CARRUTHERS LICENSED RESIDENTIAL BUILDER CUSTOM HOMES ADDITIONS/FIREPLACES PATIOS ROOFING/SIDING/REPAIRS 475-7234 CHELSEA 301f Norval R. Menge Builder CUSTOM BUILT HOMES ADDITIONS, REMODELING GARAGES AND POLE BARN We also do— LIGHT HAULING BACKHOE WORK GENERAL REPAIRS all our work fully guaranteed CALL FOR FREE ESTIMATES 475-1005 x441f R. L. BAUER Builders LICENSED AND INSURED Custom Building Houses — Garages Pole Barns Roofing — Siding Concrete Work FREE ESTIMATES Call 475-1218 31f RON MONTANGE CONSTRUCTION (RJM, INC.) Full carpentry services (rough and finish) Additions, remodeling and repairs Concrete Roofing and siding Cabinets and Formica work Metal farm buildings Grain storage bins Excavating and trenching QUALITY WORKMANSHIP FREE ESTIMATES Ph. 426-2585 or 475-1080 191f Excavating 13c HAVE BACKHOE will travel. Basements, all kinds of digging. Call collect Markis Bailey (517) 589-5282. -47-4 SAND GRAVEL KLINK EXCAVATING Bulldozer — Backhoe Road Work — Basements Trucking — Crane Work Top Soil — Demolition Drainfield — Septic Tank Trenching, 5' up Industrial, Residential, Commercial CALL 475-7631 131f	LITTLE WACK EXCAVATING Basement — Drainfields Bulldozing — Digging Snow Removal — Tree Removal LICENSED AND INSURED Paul Wackenhut Ph. 428-8025 521f ROSENTRER EXCAVATING, INC. Basements — Drainfields — Septic Tanks Backhoe Work — Bulldozer — Trucking Gravel — Sand — Topsoil Snow Removal 18740 M-52, Chelsea Neil Rosentreter 475-1990 Al Rosentreter 1-498-3227 -2-12 Landscaping/Outdoor Maint. 13d BLACK DIRT , top soil, fill dirt, sand and gravel. Ph. 475-2722, days; 475-2596 after 6 p.m. C. L. Broderick & Son. x441f LAWN MAINTENANCE BUILDING MAINTENANCE SMALL LANDSCAPING RICHARD SMITH 475-8984 after 5 p.m. 101f Repairs/Improvements 13e ALUMINUM WELDING Welding of boats, outboard motors, lawn mower, and chain saw parts, etc. Also, other types of welding, brazing and burning — aluminum, steel, stainless steel, cast iron. Dale Richardson 475-7462 x91f BRICK MASON — Dennis Garen. Ph. 475-2584. Brick and block work. Fireplaces, chimney repair. Truck painting and stone work. 475-4118 CEMENT WORK — Licensed and insured. Ph. 994-1351. x46-4 EDWARDS HOME MAINTENANCE SERVICE Vinyl and Aluminum siding Storm windows and doors Cellulose insulation Call Mike collect at 1-517-592-8488 after 5 p.m. or Joe, at 426-5039 after 5 p.m. x50-6 Floor Covering Is Our Business TILE—SOLARIAN—HARDWOOD CARPET—INSTALLATION—REPAIRS FREE ESTIMATES Merkel Home Furnishings 41f FOUNDATION REPAIRS or entire replacement. Licensed and insured. Ph. 994-1351. x46-4 LEONARD REITH Master Plumber Licensed Electrician Hot Water Heat 18238 N. Territorial Rd. Chelsea, Mich. 48118 Phone: 475-2044 521f LET GEORGE DO IT! HOME REPAIR AND MAINTENANCE SERVICE PHONE 475-8903 GEORGE ELLENWOOD 563 McKinley St. Chelsea Mich. -49 PATCHING and PLASTERING. Call 475-7489. 331f PLUMBING by licensed master plumber. Quality work, reasonably priced. 24-hour service. Ph. 487-9842. 291f	Why hire FOUR contractors when ONE will do? HILLTOP, INC. PLUMBING - HEATING - ELECTRICAL EXCAVATING - SEPTIC - DRAINFIELDS Do - It - Yourself Shop with advice. Mathru F. 8:00 A.M. - 5:00 P.M. Sat. 8:00 A.M. - 12:00 P.M. 475-2949 8316 Werker Rd. Chelsea, MI 48118 311f WILKERSON MASONRY RESIDENTIAL — COMMERCIAL BRICK — BLOCK — STONE FIREPLACES — CEMENT WORK REPAIRS GLENN WILKERSON Ph. 475-1583 -21-33 Window Screens Repaired Reasonable rates Chelsea Hardware 110 S. Main Ph. 475-1121 301f	WOOD DECKS , screened porches and other additions and repairs. John Ruhlig. Ph. 475-8996. Experienced and reliable. x46-4 Bus. Opportunity 15 NEW BUSINESS OPPORTUNITIES — Authorized dealer of American Entrepreneurs Association products is prepared to help. Call Tom for free catalog. Ph. 475-1250. -48-4 OWN YOUR OWN Jean Shop; go direct—no middle man, no salesman's fee. Offering all the nationally known brands such as Jordache, Vanderbilt, Calvin Klein, Sedgefield, Levi and over 70 other brands. \$13,500.00 includes beginning inventory, airfare for 1 to our national warehouse, training, fixtures and Grand Opening Promotions. Call Mr. Loughlin at Mademoiselle Fashions, 612-835-1304. -46 SIX O'CLOCK in the morning — Rise and Shine, only for self-motivated people with ability to think big. Ph. 426-2557. -x46 Financial 14 PRIVATE PARTY. Purchasers land contracts and mortgages. Eves. only 475-1469. x211f LAND CONTRACTS PURCHASED — Any size, any property type. Courteous and reliable service. Call Dan Duncan, Ann Arbor Real Estate Co., 668-8595. 331f The first use of collective bargaining was by an organization of Philadelphia cordwainers (leather workers), according to a publication of the U. S. Department of Labor. The event took place in 1792.					

SPECIALS

NABISCO
Snack Crackers 79c
 1-LB. BOX DOMINO
4-X or Brown Sugar . . 56c
 1-LB. PKG. ECKRICH
Hot Dogs \$1.43
 3-LB. BAG NEW CROP TEXAS
Yellow Onions 73c

PLAY THE MICHIGAN DAILY LOTTERY GAME
 LOTTERY CLAIM CENTER
KUSTERER'S
FOOD MARKET
DIAL 475-2721 WE DELIVER

Homeowners insurance is homeowners insurance, right? Wrong.

Auto-Owners home-owners insurance is different. Not only in the way we handle claims (Auto-Owners built its reputation on fast, fair claims service). Not only in the personal attention we give (another Auto-Owners trademark). Or in the way we could save you money (our low rates are famous). But, in our whole outlook on home-owners insurance, with innovative, imaginative policies that make sure you get just what you need, for just what you want to pay. So, if you're thinking you'd be wrong if you didn't call Auto-Owners... you're right.

Auto-Owners Insurance
 You can't find a better name for homeowners insurance

SPRINGER AGENCY, INC.
 (formerly the Mayer Agency)
 Phone 475-8689 Chelsea, Michigan

YOUR Independent Insurance AGENT
 SERVES YOU FIRST

Auto-Owners Insurance
 You can't find a better name for homeowners insurance

SPRINGER AGENCY, INC.
 (formerly the Mayer Agency)
 Phone 475-8689 Chelsea, Michigan

YOUR Independent Insurance AGENT
 SERVES YOU FIRST

Auto-Owners Insurance
 You can't find a better name for homeowners insurance

SPRINGER AGENCY, INC.
 (formerly the Mayer Agency)
 Phone 475-8689 Chelsea, Michigan

YOUR Independent Insurance AGENT
 SERVES YOU FIRST

Auto-Owners Insurance
 You can't find a better name for homeowners insurance

SPRINGER AGENCY, INC.
 (formerly the Mayer Agency)
 Phone 475-8689 Chelsea, Michigan

YOUR Independent Insurance AGENT
 SERVES YOU FIRST

Auto-Owners Insurance
 You can't find a better name for homeowners insurance

SPRINGER AGENCY, INC.
 (formerly the Mayer Agency)
 Phone 475-8689 Chelsea, Michigan

YOUR Independent Insurance AGENT
 SERVES YOU FIRST

Auto-Owners Insurance
 You can't find a better name for homeowners insurance

SPRINGER AGENCY, INC.
 (formerly the Mayer Agency)
 Phone 475-8689 Chelsea, Michigan

YOUR Independent Insurance AGENT
 SERVES YOU FIRST

Auto-Owners Insurance
 You can't find a better name for homeowners insurance

SPRINGER AGENCY, INC.
 (formerly the Mayer Agency)
 Phone 475-8689 Chelsea, Michigan

YOUR Independent Insurance AGENT
 SERVES YOU FIRST

Auto-Owners Insurance
 You can't find a better name for homeowners insurance

SPRINGER AGENCY, INC.
 (formerly the Mayer Agency)
 Phone 475-8689 Chelsea, Michigan

YOUR Independent Insurance AGENT
 SERVES YOU FIRST

Auto-Owners Insurance
 You can't find a better name for homeowners insurance

SPRINGER AGENCY, INC.
 (formerly the Mayer Agency)
 Phone 475-8689 Chelsea, Michigan

Your Approval

is the
cornerstone
of our
business

Staffan Funeral Home

John W. Mitchell, Director

124 PARK STREET PHONE 475-1444

Telephone your club news to 475-1371

CASH FOR LAND CONTRACTS

DOUG'S

• INTERIOR • EXTERIOR
 RESIDENTIAL • COMMERCIAL
 • BOOM TRUCK
 • WALLPAPER HANGING
 • COMPLETE PAINTING
 • SENSIBLE PRICES
 • QUALITY WORKMANSHIP

CALL 475-1196

8040 MESTER RD CHELSEA

LET WANT ADS WORK FOR YOU

Church Services

Lutheran—

ST. JACOB EVANGELICAL LUTHERAN
The Rev. Andrew Bloom, Pastor
12601 Rietmiller Rd., Grass Lake
Every Sunday—
9:00 a.m.—Sunday school.
10:15 a.m.—Divine services.

ST. THOMAS EVANGELICAL LUTHERAN
Ellsworth and Haab Rds.
The Rev. Paul Puffe, Pastor
Every Sunday—
9:30 a.m.—Sunday school.
10:45 a.m.—Worship service.

FAITH EVANGELICAL LUTHERAN
6575 North "A" Rd.
The Rev. Mark J. Jansky, Pastor
Wednesday, April 22—
5:15-7:30 p.m.—Confirmation.
Thursday, April 23—
7:00 p.m.—Sunday School Teachers.
8:00 p.m.—Choir practice.
Friday, April 24—
8:30 p.m.—Board of Education.
Sunday, April 26—
8:45 a.m.—Sunday school, adult class.
10:00 a.m.—Worship service. Sermon on Matthew 11:7-15.

OUR SAVIOR LUTHERAN
1515 S. Main, Chelsea
The Rev. Franklin H. Giebel, Pastor
Broadcast Sundays—
Watch "This is the Life."
7:00 a.m.—WYFZ, channel 7, Detroit.
"The Church of the Lutheran Hour."
8:35 a.m.—WIBM, 1450 AM, Jackson.
12:30 p.m.—WYFC, 1520 AM, Ypsilanti.
Every Sunday—
9:30 a.m.—Sunday school.
10:30 a.m.—Morning worship.
Every Monday—
3:45 p.m.—7th grade confirmation.
6:30 p.m.—8th grade confirmation.
Every Thursday—
7:00 p.m.—Adult Information Class.

ZION LUTHERAN
Corner of Fletcher and Waters Rds.
The Rev. John R. Morris, Pastor
Tuesday, April 21—
4:00 p.m.—Joy-makers.
7:00 p.m.—Senior Choir.
Wednesday, April 22—
7:30 p.m.—Sunday school staff.
Sunday, April 26—
9:00 a.m.—Sunday school.
10:15 a.m.—Worship service.

Church of Christ—
CHURCH OF CHRIST
13661 Old US-12, East
Evangelist Robert B. Murray
Every Sunday—
7:30 a.m.—Radio program-WNRS in Saline.
9:30 a.m.—Bible study.
10:30 a.m.—Worship service. Nursery available.
6:00 p.m.—Worship service.
Every Wednesday—
7:30 p.m.—Bible study classes for all ages.

Catholic—
ST. MARY
The Rev. Fr. David Philip Dupuis, Pastor
Every Sunday—
5:00 p.m.—Mass.
Confessions immediately following Mass on Saturday.
Every Sunday—
8 a.m., 10 a.m. and 12 noon—Mass.

United Church of Christ—
ST. JOHN'S EVANGELICAL AND REFORMED
The Rev. Paul McKenna, Pastor
Every Sunday—
10:30 a.m.—Sunday school and worship service.
First Sunday of every month—
Communion.

BETHLEH EVANGELICAL AND REFORMED
Freedom Township
The Rev. Roman A. Reineck, Pastor
Every Sunday—
10:00 a.m.—Worship service.

ST. PAUL
The Rev. Erwin R. Koch, Pastor
Tuesday, April 21—
1:00 p.m.—Needle and Thread.
7:30 p.m.—Church Council.
Wednesday, April 22—
4:15 p.m.—Youth Choir rehearsal.
7:30 p.m.—Board of Elders.
7:45 p.m.—Chancel Choir.
Sunday, April 26—
9:00 a.m.—10th and 8th grade confirmation.
9:00-10:30 a.m.—Church school.
9:00-10:30 a.m.—Ben Donaldson Bible display.
10:30 a.m.—Worship service.
12:00 p.m.—Junior High luncheon with the Fred Jahnes, Camp Talah managers.
Tuesday, April 28—
7:30 p.m.—Building and grounds committee.

CONGREGATIONAL
The Rev. Carl Schwarm, Pastor
Every Sunday—
10:30 a.m.—Worship. Nursery provided for pre-schoolers.
Second Thursday—
1:00 p.m.—Women's Fellowship.
Weekly Bible study—As scheduled in Sunday bulletin.
Youth groups—As scheduled in Sunday bulletin.

ST. JOHN'S
Rogers Corners, Waters and Fletcher Rds.
The Rev. Gary Kwiatek, Pastor
Every Sunday—
10:30 a.m.—Worship and Sunday school.

Episcopal—
ST. BARNABAS
The Rev. Fr. Jerrold F. Beaumont, B.S.P.
Every Sunday—
10:00 a.m.—Holy Communion first, third and fifth Sundays.
10:00 a.m.—Morning prayer, second and fourth Sundays.
Church school and nursery every Sunday.
The first Sunday of the month is a Family Worship Service. Coffee hour follows all Sunday services. Bishop's Committee first Sunday of every month. Episcopal Church Women third Sunday of the month.
Every Wednesday—
7:30 p.m.—Holy Communion.

Assembly of God—
FIRST ASSEMBLY OF GOD
The Rev. Richard Coury, Pastor
Every Sunday—
9:45 a.m.—Sunday school.
11:00 a.m.—Worship service.
6:00 p.m.—Evening worship.
Every Wednesday—
7:00 p.m.—Christ's Ambassadors. Missionettes. Bible Meditation and prayer.

Non-Denominational—
CHELSEA CHURCH OF THE UNCOMPROMISING WORD
The Rev. Chuck Clemons, Pastor
Every Sunday—
10:00 a.m.—Sunday school.
11:00 a.m.—Morning worship.
8:30 p.m.—Evening worship.
Every Wednesday—
7:00 p.m.—Midweek prayer and Bible study.

IMMANUEL BIBLE
145 E. Summit St.
The Rev. Ron Little, Pastor
Every Sunday—
9:45 a.m.—Sunday school, nursery provided.
11:00 a.m.—Morning worship, nursery provided.
8:00 p.m.—Evening worship.
Every Wednesday—
7:00 p.m.—Family hour, prayer meeting and Bible study.

COVENANT
Dr. R. J. Kistler, Pastor
K. of C. Hall, W. Old US-12
Every Wednesday—
8:00 p.m.—Choir.
Every Saturday—
9:00 p.m.—Confirmation class.
Every Sunday—
3:00 p.m.—Sunday school.
4:00 p.m.—Worship service. Nursery provided.

MT. HOPE BIBLE
12894 Triad Rd., Grass Lake
The Rev. R. H. Brandon, Pastor
Every Sunday—
10:00 a.m.—Sunday school.
11:00 a.m.—Morning worship.
7:00 p.m.—Evening worship.
Every Wednesday—
7:00 p.m.—Bible study.

NORTH SHARON BIBLE
Sylvan and Washburne Rds.
The Rev. William Ensen, Pastor.
Every Sunday—
10:00 a.m.—Sunday school.
11:00 a.m.—Worship service.
6:00 p.m.—Senior High Youth meeting.
Youth choir.
7:00 p.m.—Evening worship service. (Nursery available.) All services interpreted for the deaf.
Every Wednesday—
7:00 p.m.—Bible study and prayer meeting. (Nursery available.)

CHELSEA CHRISTIAN MEN'S FELLOWSHIP PRAYER BREAKFAST
Chelsea Hospital Cafeteria.
First Saturday Each Month—
8:00 a.m.—Breakfast.
8:30-10:00 a.m.—Program.

CHELSEA HOSPITAL MINISTRY
Every Sunday—
10:00 a.m.—Morning service, Chelsea Community Hospital Cafeteria.

Mormon—
CHURCH OF JESUS CHRIST OF LATTER-DAY SAINTS
Chelsea Branch-Rebekah Hall
Every Sunday—
9:30 a.m.—Sacrament.
10:50 a.m.—Sunday school.
11:40 a.m.—Priesthood.

Baptist—
CHELSEA BAPTIST
337 Wilkinson St.
The Rev. Thode B. Thodeson, Pastor
Every Sunday—
10:00-10:45 a.m.—Church school.
10:50 a.m.—Morning worship.
11:20 a.m.—Junior church school.
8:00 p.m.—Evening fellowship.
Every Wednesday—
7:00 p.m.—Mid-week Bible study and prayer.

GREGORY BAPTIST
The Rev. David Brinkman, Pastor
Every Sunday—
9:45 a.m.—Sunday school.
11:00 a.m.—Morning worship.
6:00 p.m.—Young people.
7:00 p.m.—Evening worship.

Church of the Nazarene—
SOUTHWEST CHURCH OF THE NAZARENE
14555 Holmes Rd. (M-106)
Fred Bridge, Pastor
Every Sunday—
10:00 a.m.—Sunday school.
11:00 a.m.—Morning worship.
6:00 p.m.—Evangelical service.
Every Wednesday—
7:00 p.m.—Bible Study and Prayer Meeting.

Methodist—
SALEM GROVE UNITED METHODIST
3320 Notten Rd.
The Rev. Ronald Brunger, Pastor
Every Sunday—
9:30 a.m.—Sunday school.
10:30 a.m.—Worship service.

FIRST UNITED METHODIST
Parks and Territorial Rds.
The Rev. Larry Nichols and The Rev. David Goldsmith, Pastors
Every Sunday—
9:15 a.m.—Morning worship.
10:00 a.m.—Sunday school.

WATERLOO VILLAGE UNITED METHODIST
618 Washington St.
The Rev. Larry Nichols and The Rev. David Goldsmith, Pastors
Every Sunday—
10:00 a.m.—Sunday school.
11:15 a.m.—Worship service.

FIRST UNITED METHODIST
The Rev. Marvin H. McCallum, Pastor
Tuesday, April 21—
7:15 p.m.—The Wesleyan Circle will meet in the home of Mrs. Minnie Erskine.
Wednesday, April 22—
12:00 p.m.—The Mature Minglers will meet in the large instruction room upstairs in the Education Building.
12:00 p.m.—The Share and Study Group will meet in Room 6 of the Education Building.
3:30 p.m.—Praise choir.
8:00 p.m.—Chancel choir.
Thursday, April 23—
7:30 p.m.—The Administrative Board will meet in the Education Building.
Saturday, April 25—
9:00 a.m.—Spring Clean-up of building and grounds. Bring your own equipment.
Sunday, April 26—
9:00 a.m.—Worship service, crib nursery.
10:00 a.m.—Worship service. Crib nursery for infants up to the age of two and church school for children ages two through five. Kindergartners through fifth graders will attend the worship service until the second hymn is sung. Students in grades six through 10 and the Adult Class will meet following the close of the worship service.
11:55 a.m.—All church school classes will be dismissed.
6:00 p.m.—Senior High U.M.Y.F. until 8 p.m.
Monday, April 27—
6:45 p.m.—Youth Ball Choir.
7:00 p.m.—Rhythmic Choir.
7:30 p.m.—Carollers.
7:30 p.m.—Children's Division meeting.

NORTH LAKE UNITED METHODIST
The Rev. John Elliott, Pastor
Every Sunday—
10:00 a.m.—Worship service. Nursery provided for children up to second grade.
10:30 a.m.—Christian Education.
5:00 p.m.—U.M.Y.F.

CHELSEA FREE METHODIST
Meetings at St. Barnabas Episcopal Church
29500 Old US-42
Madel Bradley, Pastor
Wednesday, April 22—
3:30 p.m.—Children's choir.
7:30 p.m.—Growth Groups.
Thursday, April 23—
7:00 p.m.—OVC, FMY, Junior High.
Saturday, April 25—
Church Work Day.
Sunday, April 26—
5:00 p.m.—Worship service.

METHODIST HOME CHAPEL
Chaplain Ira Wood
Every Sunday—
8:45 a.m.—Worship service.

SHARON UNITED METHODIST
Rev. Ronald L. Figgins, Pastor
Corner Pleasant Lake Rd. and M-52
Every Sunday—
10:00 a.m.—Sunday school.
11:00 a.m.—Worship service.

Presbyterian—
FIRST UNITED PRESBYTERIAN
Unadilla
William D. Kuenzli, Pastor
Every Sunday—
9:45 a.m.—Sunday school.
11:00 a.m.—Worship service.

Christian Scientist—
FIRST CHURCH OF CHRIST SCIENTIST
1863 Washtenaw Ave., Ann Arbor
Every Sunday—
10:30 a.m.—Sunday school, morning service.

Father-Son Banquet Set At Salem Grove Church

A Father and Son Banquet will be held at Salem Grove United Methodist church Saturday evening, May 2 at 6:30 p.m.

William Young will be the toastmaster. Several fathers and sons will take part in the program. The singing of father-and-son songs will be led by the pastor, the Rev. Ronald Brunger. Featured entertainment of the evening will be a "Big Bob Magic Show," presented by Bob West of Ann Arbor, the resident of "Assembly 88" Society of American Magicians in the Ann Arbor-Ypsilanti Area.

Bob West has performed at many church banquets and Cub Scout and Girl Scout affairs in the area. He has worked at such restaurants and clubs as the "Roostertail" in Detroit, "Blind Pig" in Ann Arbor, and "Baja's" in Dearborn. He appears regularly at the "Grainary" in Ypsilanti. He has done shows for the "Lane Punch Co.," Edwards Brothers in Ann Arbor, and the Washtenaw Mutual Maintenance Association. He has often performed for children's shows, and has been seen in the Mott Children's Hospital. He is a member of "Ring 210," International Brotherhood of Magicians in Ann Arbor.

Fathers and sons of the area are invited to this event. A free-will offering will be taken to defray expenses.

4-H CLUBS

ROGERS CORNERS HERDSMEN

Rogers Corners Herdsmen held their first meeting of the summer at Lima Town Hall, Tuesday, April 14 at 7:30 p.m. Officers for the year are Nancy Heller, president; Leonard McCalla, vice-president; Diane Barels, secretary; and, Beth Heller, treasurer. New leaders for the year are Keith Johnson for beef and Leonard McCalla for swine.

During the next few weeks, the club voted to sell seeds to raise extra money for educational displays and decorations at the fair, to be held the last full week of July. Market hogs and lamb weigh-in is May 2 between the hours of 9 a.m. and 12 p.m. at the Farm Council Grounds.

Holding a square dance in June was discussed. Nominations for King and Queen was tabled until rules are sent from the 4-H office. The next meeting will be held May 12 at 7:30 p.m. at Lima Town Hall.

Tourist Assoc. Issues New Spring, Summer Events Calendar

Tired of the winter blahs and ready to head out into spring and summer? There's a free Calendar of Events available from the Southeast Michigan Travel and Tourist Association that tells you all about what's happening from April through September.

Festivals, fairs, special attractions, "name" headliners, musical and cultural events, races, sporting events, you name it—the calendar is loaded with information.

Produced as a public service by the Association, the calendar covers an 11-county region and is available by writing: Travel and Tourist Association of Southeast Michigan, Suite 350 American Center, 27777 Franklin Rd., Southfield 48034, and asking for it by name, "Spring-Summer Calendar of Event."

Culligan
filtered
conditioned
SOFT WATER

LIKE HAVING
A FAMILY
SERVANT!

You'll find that you can clean kitchens and baths in a fraction of the time. Eliminates dulling hard water film... helps keep everything cleaner longer. Saves on soaps and cleaners.

ASK THE MAN WHO CARES!
SAY...



2321 JACKSON AVE.
ANN ARBOR
662-5665

Come and Enjoy!
DEXTER MASONS and STARS

Smorgasbord SUNDAY, MAY 3

12:00 noon - 2:30 p.m.

AT

WYLIE MIDDLE SCHOOL
Dexter, Mich.

DONATIONS—

Senior Citizens . . . \$4.50
Adults . . . \$5.00
Ages 5 to 12 years . . \$2.25
Under 5 . . . Free



BOB WEST

Bullard, Crim Named Outstanding Legislators of Year

It was announced April 3 that State Representative Bobby Crim, Speaker of the House, and State Representative Perry Bullard, chair of the House Judiciary Committee, are the "co-winners of the 1981 Outstanding Legislator of the Year Award."

Speaker Crim was being recognized for his "continued efforts to achieve equitable tax referendum and his commitment to education and the economic revitalization of Michigan economy." Semelroth cited Bullard for his "leadership in the area of employee rights legislation as well as his commitment to open meetings and to civil rights" in general.

Tell Them You Read It
In The Standard!

SPECIAL!

50¢ OFF ALL-YOU-CAN-EAT SALAD BAR

Regularly \$1.59

Saturday, April 25 and
Sunday, April 26

New in Town?

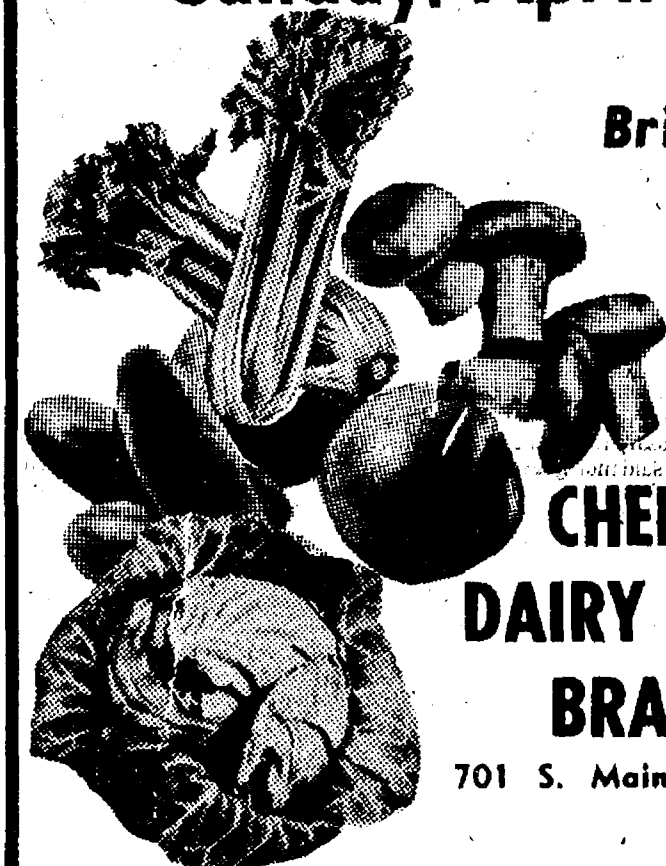
CALL
426-8319

Our
Welcome Wagon

Hostess
Irene Henderson

for
FREE GIFTS

and
INFORMATION



Bring
the
family!

CHLSEA
DAIRY QUEEN
BRAZIER

701 S. Main St., Chelsea
Ph. 475-2677

ST. LOUIS SCHOOL BENEFIT DINNER-DANCE

Sponsored by Knights of Columbus

Chelsea	Ann Arbor	Hudson
Jackson	Ypsilanti	Adrian
Dexter	Saline	Manchester
Mich. Center	Milan	Brooklyn

SATURDAY, APRIL 25
at ST. LOUIS SCHOOL
16195 Old US-12, Chelsea

Buffet Dinner 6:00 p.m. Dancing to follow.

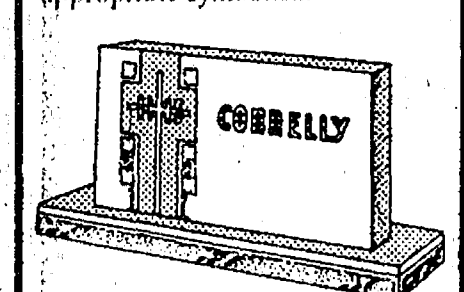
Cash Bar \$15 per couple

Tickets available from K. of C. members
or call Jerry Hammerschmidt, 475-2957

Benefit Tickets with many fine prizes
also available from members.

MONUMENTS

Each of our client's requirements is different, which means that each monument we produce is custom-carved for the individual family. We advise on cemetery regulations, proper proportion, material and appropriate symbolism.



PATTEN MONUMENT
Represented By
BURGHARDT-COLE
CHELSEA FUNERAL CHAPEL
Donald A. Cole, Director
313-475-1531
214 E. Middle St. Chelsea

HOME - AUTO - BUSINESS - LIFE SPRINGER AGENCY, INC.

(formerly the Mayer Agency)

Your Local Independent Insurance Agency providing dependable protection and prompt claim payment through 10 of the nation's leading insurance companies.



115 Park St., Chelsea, Mich.
475-8689

Sheridan W. Springer
Ruth Devine

Elaine Yocum

Donald S. Peck
Marilyn Holt

MORTGAGE SALE
Default having been made in the terms and conditions of a certain mortgage made by John D. Croel and Elva J. Croel, husband and wife, of Ann Arbor, Michigan, to Great Lakes Federal Savings and Loan Association, of the City of Ann Arbor, Washtenaw County, Michigan, a corporation organized under the Home Owners' Loan Act of 1933, of the United States of America, as amended, Mortgage, dated the 8th day of May, 1979, and recorded in the office of the Register of Deeds for the County of Washtenaw, and State of Michigan, on the 14th day of May, 1979, in Liber 1706 of Washtenaw County Records, at Page 249, on which mortgage there is claimed to be due, at the date of this notice, for principal and interest, the sum of Twenty Three Thousand Nine Hundred Fourteen and 96/100 (\$23,914.96) Dollars plus an escrow deficit in the sum of Sixty Eight and 46/100 (\$68.46) Dollars;
And no suit or proceedings at law or in equity having been instituted to recover the debt secured by said mortgage or any part thereof;
Now, therefore, by virtue of the power of sale contained in said mortgage, and pursuant to the statute of the State of Michigan, in such case made and provided, notice is hereby given that on the 21st day of May, 1981, at 10:00 o'clock in the forenoon, Local Time, said mortgage will be foreclosed by a sale at public auction, to the highest bidder, at the Huron Street entrance to the Washtenaw County Building, in the City of Ann Arbor, Washtenaw County, Michigan, (that being the building where the Circuit Court for the County of Washtenaw is held), of the premises described in said mortgage, or so much thereof as may be necessary to pay the amount due, as aforesaid, on said mortgage, with the interest thereon at Ten and 7/100 (10.7%) per cent per annum and all legal costs, charges and expenses, including the attorney fees allowed by law, and also any sum or sums which may be paid by law and also any sum or sums which may be paid by the undersigned, necessary to protect its interest in the premises. Said premises are situated in the City of Ann Arbor, County of Washtenaw, State of Michigan and described as:

Lot 157, Arbor Oaks Subdivision No. 1, as recorded in Liber 19 of Plats, Pages 67 through 71, Washtenaw County Records.
During the six months immediately following the sale, the property may be redeemed.
Dated at Ann Arbor, Michigan, April 6, 1981.
GREAT LAKES FEDERAL SAVINGS & LOAN ASSOCIATION, Mortgagee
LAIRD, GRACE & CHIN Sherry Chin
Attorneys for Mortgagee
Great Lakes Federal Savings Bldg.
401 E. Liberty Street
Ann Arbor, Michigan 48104
April 14-21-28-May 5-12

MORTGAGE SALE—Default having been made in the terms and conditions of a certain mortgage made by Harold C. Jewell and Allison M. Jewell, his wife of Ypsilanti, Washtenaw County, Michigan, Mortgage, to Bank of the Commonwealth, Mortgagee, dated the 30th day of April, 1979, and recorded in the office of the Register of Deeds, for the County of Washtenaw and State of Michigan, on the 2nd day of May, 1979, in Liber 1704 of Washtenaw County Records, on page 495, on which mortgage there is claimed to be due, at the date of this notice, for principal, late charges and taxes, escrow balance and interest, the sum of Thirty Six Thousand Eight Hundred One and 19/100 Dollars (\$36,801.19);
And no suit or proceeding at law or in equity having been instituted to recover the debt secured by said mortgage or any part thereof;
Now, therefore, by virtue of the power of sale contained in said mortgage, and pursuant to the statute of the State of Michigan in such case made and provided, notice is hereby given that on Thursday, the 14th day of May, 1981, at 10:00 o'clock a.m., Local Time, said mortgage will be foreclosed by a sale at public auction, to the highest bidder, at the Western entrance to the County Building in Ann Arbor Michigan (that being the building where the Circuit Court for the County of Washtenaw is held), of the premises described in said mortgage, or so much thereof as may be necessary to pay the amount due, as aforesaid, on said mortgage, with the interest thereon at eleven per cent (11%) per annum and all legal costs, charges and expenses, including the attorney fees allowed by law, and also any sum or sums which may be paid by the undersigned, necessary to protect its interest in the premises. Said premises are described as follows:

All that certain piece or parcel of land situate in the Township of Ypsilanti in the County of Washtenaw, and State of Michigan, and described as follows, to-wit: Lot 260 East Park Subdivision, according to the plat thereof, as recorded in Liber 5, Page 16 of Plats, Washtenaw County Records.
During the six months immediately following the sale, the property may be redeemed.
Dated at Detroit, Michigan, March 31 1981
Bank of the Commonwealth, Mortgagee
David S. Keast
8th Floor, Commonwealth Bldg.
Detroit, Michigan 48226
April 7-14-21-28-May 5

MORTGAGE SALE
Default having been made in the terms and conditions of a certain mortgage made by Roger L. Tinscher and Jacquelyn M. Tinscher, husband and wife, of Ann Arbor, Michigan, to Great Lakes Federal Savings & Loan Association, of the City of Ann Arbor, Washtenaw County, Michigan, a corporation organized under the Home Owners' Loan Act of 1933, of the United States of America, as amended, Mortgage, dated the 24th day of August, 1979, and recorded in the office of the Register of Deeds for the County of Washtenaw, and State of Michigan, on the 29th day of August, 1979, in Liber 1725 of Washtenaw County Records, at Page 254, on which mortgage there is claimed to be due, at the date of this notice, for principal and interest, the sum of Fifty Six Thousand Three Hundred Seventy and 18/100 (\$56,370.18) Dollars, plus an escrow deficit in the sum of One Hundred Ninety Six and 16/100 (\$196.16) Dollars;
And no suit or proceedings at law or in equity having been instituted to recover the debt secured by said mortgage or any part thereof;
Now, therefore, by virtue of the power of sale contained in said mortgage, and pursuant to the statute of the State of Michigan in such case made and provided, notice is hereby given that on the 21st day of May, 1981, at 10:00 o'clock in the forenoon, Local Time, said mortgage will be foreclosed by a sale at public auction, to the highest bidder, at the Huron Street entrance to the Washtenaw County Building, in the City of Ann Arbor, Washtenaw County, Michigan, (that being the building where the Circuit Court for the County of Washtenaw is held), of the premises described in said mortgage, or so much thereof as may be necessary to pay the amount due, as aforesaid, on said mortgage, with the interest thereon at Eleven and 25/100 (11.25%) per cent per annum and all legal costs, charges and expenses, including the attorney fees allowed by law, and also any sum or sums which may be paid by the undersigned, necessary to protect its interest in the premises. Said premises are situated in the Township of Lodi, County of Washtenaw, State of Michigan and described as:

Commencing at the East quarter post of Section 2, T3S, R5E, Lodi Township, Washtenaw County, Michigan; thence South 01° 07' 00" West 1183.0 feet in the East line of said section for a place of beginning; thence North 89° 58' 00" East 194 feet; thence North 01° 07' 00" East 225 feet to the place of beginning, being a part of the East 1/4 of the Southeast 1/4 of Section 2, Lodi Township, Washtenaw County, Michigan.
During the six months immediately following the sale, the property may be redeemed.
Dated at Ann Arbor, Michigan, April 6, 1981.
GREAT LAKES FEDERAL SAVINGS & LOAN ASSOCIATION, Mortgagee
LAIRD, GRACE & CHIN Sherry Chin
Attorneys for Mortgagee
Great Lakes Federal Savings Bldg.
401 E. Liberty Street
Ann Arbor, Michigan 48104
April 14-21-28-May 5-12

MORTGAGE SALE—Default having been made in the conditions of a mortgage made by Robert Nearing and Julia Mae Nearing, his wife, to Midland Mortgage Corporation, a Michigan Corporation, Mortgagee, dated November 30, 1976, and recorded on December 2, 1976, in Liber 1574, on page 354, Washtenaw County Records, Michigan, and re-recorded February 14, 1977, in Liber 1582, on page 51, and assigned by said Mortgagee to Mortgage Associates, Inc., a Rhode Island Corporation, by an assignment dated June 30, 1980, and recorded on August 28, 1980, in Liber 1770, on page 95, Washtenaw County Records, Michigan, on which mortgage there is claimed to be due at the date hereof the sum of Twenty Three Thousand Forty Four and 37/100 Dollars (\$23,444.37), including interest at 8% per annum.
Under the power of sale contained in said mortgage and the statute in such case made and provided, notice is hereby given that said mortgage will be foreclosed by a sale of the mortgaged premises, at some place to be determined, at public venue, at the Western entrance to the County Building in Ann Arbor, Michigan, at 10:00 o'clock a.m., Local Time, on Thursday, May 7, 1981.
Said premises are situated in City of Ypsilanti, Washtenaw County, Michigan, and are described as: A parcel of land beginning at a point of the North line of Davis Street 227 feet west of the point of intersection of the North line of Davis Street and west line of Emerick Street; thence west along the North line of Davis Street 50 feet; thence North parallel with Emerick Street 17 rods; thence East parallel with Davis Street 50 feet; thence south to the place of beginning, in the City of Ypsilanti, being part of the West half of the southwest 1/4 of Section 10, Town 3 South, Range 7 East, City of Ypsilanti, Washtenaw County, Michigan.
During the six months immediately following the sale, the property may be redeemed.
Dated: March 31, 1981
Mortgage Associates, Inc.
Hecht & Cheney
Union Bank Plaza
Grand Rapids, Michigan 49503
March 31-April 7-14-21-28

STATE OF MICHIGAN
In the Circuit Court for the County of Washtenaw.
General Civil Action
File No. 81-0013-CH
ALBERT HACK and FLORENCE E. HACK, Plaintiffs,
-vs-
WALTER CYKIERT, HERMAN ROSS, ASA SHAPIRO and HARRY BRODY, Joint Venturers, d/b/a SCIO DEVELOPMENT COMPANY, Defendants.
ORDER TO ANSWER IN PUBLICATION CASES
At a session of said Court held on the 25th day of March, 1981, Washtenaw County Building, Ann Arbor, Michigan.
PRESENT: The Honorable Henry T. Conlin, Circuit Judge.
On the 25th day of March, 1981, an action was filed by ALBERT HACK and FLORENCE E. HACK, Plaintiffs, against WALTER CYKIERT, HERMAN ROSS, ASA SHAPIRO and HARRY BRODY, Joint Venturers, d/b/a SCIO DEVELOPMENT COMPANY, Defendants, in this Court to Foreclose a Contract between the Plaintiffs as sellers and the Defendants as purchasers dated April 7, 1970, for the sale and conveyance of the following described premises:

PARCEL 1. Beginning at the north quarter corner of Section 29, Town 2 South, Range 5 East, Scio Township, Washtenaw County, Michigan; thence south 89° 53' 30" east 1330.70 feet along the north line of said section; thence south 0° 12' 15" east 1214.41 feet along the east line of the west half of the northeast quarter of said section; thence north 89° 11' west 26.25 feet along the center line of Park Road; thence continuing along the center line of Park Road, north 85° 14' 30" west 1308.91 feet; thence north 0° 13' 45" west 1106.33 feet along the north and south quarter line of said section to the place of beginning, being a part of the west half of the northeast quarter of said Section 29, Scio Township, containing 35.50 acres of land more or less, subject to the rights of the public over the southerly 33.0 feet thereof as occupied by Park Road.
PARCEL 2. Beginning at the south quarter corner of Section 20, Town 2 South, Range 5 East, Scio Township, Washtenaw County, Michigan; thence south 89° 47' 30" west 1181.46 feet along the south line of said section; thence north 0° 09' west 1330.49 feet; thence north 89° 53' east 1182.06 feet along the north line of said section to the place of beginning, being a part of the southeast quarter of the southeast quarter of said Section 20, containing 36.07 acres of land more or less.

IT IS HEREBY ORDERED that the Defendants, WALTER CYKIERT, HERMAN ROSS, ASA SHAPIRO and HARRY BRODY, Joint Venturers, d/b/a SCIO DEVELOPMENT COMPANY, shall answer or take such other action as may be permitted by law on or before the 1st day of June 1981. Failure to comply with this order will result in a judgment by default against said defendants for relief demanded in the Complaint filed in this Court.
s/ HENRY T. CONLIN,
Circuit Judge
PREPARED BY:
KEUSCH & FLINTHOFT
Attorneys for Plaintiffs
By: PETER C. FLINTHOFT (P-13531)
121 South Main Street
Chelsea, Michigan 48118
Phone: (313) 475-8671
March 31-April 7-14-21

STATE OF MICHIGAN
Probate Court,
County of Washtenaw.
Publication and Notice of Hearing
File No. 74967
Estate of ETHEL L. PIELEMEIER, Deceased, 111 South East St., Chelsea, Michigan. Social Security No. 383-34-4538.
TAKE NOTICE: On April 15, 1981, in the probate courtroom, Ann Arbor, Michigan, before Hon. RODNEY E. HUTCHINSON Judge of Probate, a hearing will be held on the petition of Betty Drumheller and administration was granted to PAUL E. MANN.
Notice is further given that on July 2, 1981, at 9:00 o'clock a.m., in the Probate Courtroom, Washtenaw County Building, Ann Arbor, Michigan, a hearing will be held to determine the heirs at law of the said deceased.
Creditors of the deceased are notified that all claims against the estate must be presented said PAUL E. MANN, at 306 South Main Street, Chelsea, Michigan 48118, and a copy filed with the court on or before July 2, 1981.
Notice is further given that the estate will be assigned to persons entitled thereto.
Dated: April 15, 1981
Betty Drumheller, Petitioner
265 Thornell Road
Pittsford, New York 14534
KEUSCH AND FLINTHOFT
Attorneys for the Estate
By: PETER C. FLINTHOFT P-13531
121 South Main Street
Chelsea, MI 48118 313/475-8671
April 21

STATE OF MICHIGAN
Probate Court,
County of Washtenaw.
Publication and Notice of Hearing
File No. 74968
Estate of BARBARA J. LADD, Deceased, 2710 Galside, Ann Arbor, Michigan. Social Security No. 384-16-2604.
TAKE NOTICE: On May 8, 1981 at 9:00 a.m., in the probate courtroom, Ann Arbor, Michigan, before Hon. RODNEY E. HUTCHINSON Judge of Probate, a hearing will be held on the petition of Carolyn Salamin for granting administration to Carolyn Salamin, or some other suitable person and for a determination of heirs.
Creditors of the deceased are notified that all claims against the estate must be presented said Carolyn Salamin, at 380 Washington, Chelsea, Michigan 48118, and a copy filed with the court on or before July 2, 1981.
Notice is further given that the estate will be assigned to persons entitled thereto.
Date: April 13, 1981
CAROLYN SALAMIN
380 Washington
Chelsea, Michigan 48118
KEUSCH AND FLINTHOFT
Attorneys for the Estate
By: PETER C. FLINTHOFT P-13531
121 South Main Street
Chelsea, Michigan 48118. Phone 313/475-8671.
April 21

STATE OF MICHIGAN
Probate Court,
County of Washtenaw.
Publication and Notice of Hearing
File No. 74969
Estate of THERESA OTTO, Deceased, 224 North St., Chelsea, Michigan. Social Security No. 386-20-0977.
TAKE NOTICE: On May 12, 1981 at 9:00 a.m., in the probate courtroom, Ann Arbor, Michigan, before Hon. RODNEY E. HUTCHINSON Judge of Probate, a hearing will be held on the petition of Virgil Scripser for probate, and for granting of administration to Virgil Scripser or some other suitable person and to determine the heirs of said deceased.
Creditors of the deceased are notified that all claims against the estate must be presented said Virgil Scripser at Lot 9, Whispering Pine, Alanston, Michigan 49706, and a copy filed with the court on or before July 2, 1981.
Notice is further given that the estate will be assigned to persons entitled thereto.
Date: April 8, 1981
VIRGIL SCRIPSER, Petitioner
Lot 9, Whispering Pine
Alanston, Michigan 49706
KEUSCH & FLINTHOFT
By: JOHN P. KEUSCH P-15927
Chelsea, Michigan 48118 (313) 475-8671
April 21

Easter Guests
Mr. and Mrs. Duane L. Gentner and son Christopher of Aurora, Colo., were Easter week-end guests of their parents, Mr. and Mrs. Floyd E. Gentner of 316 Jackson St.
Other guests present for the occasion were Mr. and Mrs. Ronald Gentner and daughter Tracy of Stockbridge; Mr. and Mrs. Terry D. Gentner and daughter Jennifer of Chelsea; Elenora Wright, Don Wright, Robert V. Abdon, Mrs. Russell Abdon, all of Chelsea and Duane Abdon of Aurora, Colo.
The family visited Floyd E. Gentner at St. Joseph Mercy Hospital, Ann Arbor, where he had been a patient for one week. Mr. Gentner was transferred to Chelsea Community Hospital Monday, April 20 and will remain in intensive care for a number of days.

Walter P's Ming Car
Walter P. Chrysler wasn't particularly happy with the factory color of his specially-ordered 1932 Chrysler Imperial when he saw it. He decided the deep blue should go and be replaced with a custom color matching his favorite Ming vase. His Ming-red Imperial is one of several automobiles, once owned by important individuals, which are now on exhibit at Henry Ford Museum, Dearborn.

Regular Meeting
April 6, 1981
The meeting was called to order at 8:05 p.m. by Supervisor Bauer and opened with the Pledge to the Flag.
Approved minutes of the March 16, 1981 meeting.
Treasurer's report was received.
Approved motion that no action be taken on the Clear Cable Vision proposal until further information is received.
Approved motion to advise Washtenaw County Planning Commission that our ordinance provides the necessary arrangements for mobile homes.
Approved motion to table the road contract until the May 4 meeting and a report is received from the new road committee.
Approved motion to accept the contract with Frank Stover to reassess Lima Township and insert the following, any assistance in defense over two years will require a reasonable retainer, agreeable to both parties.
Approved motion to accept the Washtenaw County Tax Systems agreement.
Approved motion to table the Sheriff's Department request for Lima Township Liquor License fees to the May meeting and acquire more information on this item.
Approved motion to accept the appointment of Vickie Connell to a two-year term to the Lima Township Planning Commission.
Approved motion to direct the clerk to write Mr. Tom Tuttle for a progress report on his private road.
Approved the 1981-82 budget as presented at the Annual Meeting.
Approved motion to pay bills.
Meeting adjourned at 10:30 p.m.

Respectfully submitted,
Arlene R. Bareis, Clerk.

In 1977, I. W. Abel retired as Steelworkers' president after reaching the mandatory retirement age of 68; he was succeeded by Lloyd McBride, according to "Important Events in American Labor History," a publication of the U. S. Department of Labor.

Please Notify Us of Any Change in Address

Card of Thanks 16
CARD OF THANKS
We would like to express our appreciation to the following people for all the wonderful things they did for Millie and our family: Chelsea Hospital and its volunteers, those at the Chelsea United Methodist Retirement Home, the Rev. Ira Wood, the Rev. Carl Schwarm, those at the Staffan Funeral Home and to Mr. and Mrs. John Quigley. Thank you.
The family of
Mildred (Millie) Burns.

14th District Court Proceedings
Week of April 9-16
Judge Kenneth Bronson, presiding
Robert Rose pled guilty to driving through a loading area when bus flashers were activated. Fines and costs, \$50.
Walter Kenny pled guilty on a bench warrant for speeding 65/70/50. Fines and costs, \$40.
Walter Kenny pled guilty on a bench warrant for no valid operator's license on person. Fines and costs, \$40.
Russell Muraviov pled guilty on a bench warrant to possession of alcohol in a closed area. Sentenced to three days jail and \$50 fines and costs.
Duane L. Lindemann was sentenced for open intoxicants to \$50 fines and costs and one day probation work program.
Karla A. Riddle pled guilty on a bench warrant for not complying to sentence. Sentenced to two days jail (week-ends) and \$50 fines and costs.

Card of Thanks 16
THANK YOU
The Booster's Club wishes to thank the following businesses and merchants for their donations to the millionaire's party: Chelsea Cleaners, Pierson Riemenschneider Realty, Ricardo's, Heydlauff's, Foxy Lady, Jack & Son Barber Shop, Winans, Dancer's, Dayspring Gifts, Karen's Apparel, Kusterer's, Chelsea Lumber, AASCO, Chelsea Pharmacy, Village Bakery, Vogel's & Fosters, Merkels, Schneider's Grocery, Strieters, Woodshed, Dave Rowe Ins., Bucky's Barber Shop, Gambles, Longworth Plating, State Farm Ins., Garnett's, Walt's Barber Shop, Gus Steger, CPA, Seltz's Tavern, Waterloo Village Mkt., Andy's Waterloo Service, Thompson's Pizza, Chelsea Lanes, Chelsea Big Boy, Polly's, McDonald's, Norm's Body Shop, Dana Corp., Chelsea State Bank, Heller Electric, Ann Arbor Trust, Honneger's, Dale Fisher, Huron Valley Optical, Parts Peddler, Palmer Ford, Frisinger Realty, D & D DeBurring, Lane Animal Hospital, Win Schulz's, Poodles & Such. Our thanks to the Community Fair for the use of the Fair Service Center. Without the help of these people the Millionaire's Party could not be possible. To the people who came and gave their support, we thank you. To all the coaches who helped and our friends who helped at the tables, a big, big thanks. See you next year.
The Athletic Booster Club.

The first strike in which women participated occurred in Pawtucket, R. I., in 1824, according to a publication of the U. S. Department-Labor, "Labor Firsts in America."

Hoffman Tire & Service
7 miles west of Chelsea
13660 E. Michigan
Grass Lake 522-8542

CERTIFIED IN TUNE UPS & ENGINE REPAIR

Schumm's
"Fine Dining at Modest Prices"
1620 M-52, Chelsea Ph. 475-2020
Announces Additions to Dinner Menu
SERVED 7 DAYS
SERVED IN DINING ROOM AND LOUNGE SIDE
Menu Guaranteed for 1 Year
SANDWICH SPECIALS
(All sandwiches served with a relish and salad of the day)
GIANT BURGER
1/2-lb. ground round on a bun
\$2.75
BLUE BURGER
Giant burger topped with blue cheese
\$2.95
SCHUMM BURGER
Giant burger with grilled onions, bacon, tomato and topped with cheese
\$3.25
THE BURGER
1/3-lb. ground round
\$2.25
BEAM BURGER
1/3-lb. ground round, with bacon, grilled onion, tomato, and topped with cheese, served on warm platter.
\$2.75
TUNA DELIGHT
Sandwich with lots of tuna, lettuce and tomato.
\$2.95
MAN HAM
Bunch of sliced ham, Swiss cheese, lettuce, tomato, mayonnaise, served on a bun.
\$2.95
FRENCH DIP
Thinly sliced roast sirloin on a French loaf with natural gravy.
\$3.50
REUBEN
Thinly sliced corned beef on rye bread, topped with sauerkraut and Swiss cheese.
\$3.50
STEAK SPECIALS
SIZZLERS
6-oz. top sirloin butt steak served on a sizzling platter \$3.50
9-oz. top sirloin butt steak served on a sizzling platter \$4.95
8-oz. chopped sirloin served on a sizzling platter \$2.95
NEW YORK STRIP STEAK
9-oz. New York dinner steak \$7.95
STEAK SANDWICH ON TOAST
Served with fries \$4.95

Save me some
NUMBERS 1980, 1981, 3100
Those are getting to be pretty familiar words around here... because now's the time to get ready for another big year with Peterson® Brand Soybean Seed. We've got a good supply of Peterson varieties and brands, some just right for your growing conditions. And this season, we've got a couple of new numbers that look very promising.
KEITH BRADBURY
1065 EASTON RD., DEXTER, MICH.
PH. 475-8316
Peterson® BRAND SOYBEAN SEED
Peterson Soybean Seed Division
Waterloo, IA • LaRoy, IL • Grand Rapids, OH
Division of Pioneer Hi-Bred International, Inc.
The Limitation of Warranty and remedy appearing on the label is part of the terms of sale. *Registered Trademark of Pioneer Hi-Bred International, Inc.

CUSTOM BUMPING and PAINTING
FREE ESTIMATES - ALL MAKES
Get the Best for Less!
FRANK GROHS CHEVROLET
Phone 426-4677 Dexter, Mich.

STRECKER & CAREY, P.C.
Certified Public Accountants
Services Provided in Following Areas:
★ AUDITING
★ INCOME TAX PREPARATION & CONSULTATION
★ ESTATES & TRUSTS
★ COMPILATIONS & REVIEWS
★ ACCOUNTING SERVICES
★ MANAGEMENT ADVISORY SERVICES
HOURS: 9 to 5 Monday thru Friday
Evening and Saturday appointments available.
8124 MAIN ST. DEXTER
PHONE 426-2522

+ AREA DEATHS +

Edward C. Cole

Chelsea Men's Father Dies At Home in Carleton

Edward C. Cole, 1709 Center St., Carleton, died at his home Friday, April 17. He was 75. He was born Nov. 10, 1905 in Addison, the son of Allen and Angeline (Clark) Cole. He had been a resident of Carleton since 1927. He married Gladys Bale in Carleton May 30, 1930. She survives.

Mr. Cole was a member of the Carleton United Methodist church, the Monroe Retired Teachers Association, NEA, MEA, and the Carleton Village Planning Commission. Mr. Cole had been very active for the last 40 years in Girl Scouts and Boy Scouts, having received Boy Scouting's highest honor, the Silver Beaver. He was also a member of Ash Senior Citizen and Farm Bureau.

Mr. Cole retired as a teacher from Airport Community Schools in 1971. He had also taught in other Monroe County schools and was employed by Monroe County Road Commission and the National Life Insurance Co.

Survivors, besides his widow, Gladys, include two daughters, Mrs. Jack (Barbara) Frankhouse of Newport and Mrs. Gerald (Mary) Klsner of Carleton; three sons, Harold of Tecumseh and Donald and Paul, both of Chelsea; two brothers, Lewis of Jasper and Lawrence of Addison; nine granddaughters; four grandsons, one great-grandson; and several nieces and nephews.

Funeral services will be held Tuesday, April 21 at 2 p.m. at the Carleton United Methodist church with the Rev. Thomas P. Macaulay officiating. Interment will follow at Michigan Memorial Park, Flat Rock.

Memorial contributions may be made to the Edward Cole Memorial Fund. Arrangements were made by the Burghardt-Cole Chelsea Funeral Chapel.

Nettie M. Wittig

Former Detroit Dies at Cedar Knoll Nursing Home

Nettie M. Wittig, a resident of the Cedar Knoll Nursing Home, formerly of Detroit, died Friday, April 17 at Cedar Knoll Nursing Home, Grass Lake. She was 85. She was born June 21, 1895 in New Boston, the daughter of Walter and Mary Ellen Dingman. She was formerly employed at the Hudson Motor Car Co. of Detroit.

Mrs. Wittig was preceded in death by one son, Harold Drouare. She is survived by one daughter-in-law, Mrs. Elizabeth Drouare of Grass Lake; five grandchildren, Ralph Drouare of Union Lake, Roger Drouare and Rochelle Drouare, both of Grass Lake, Mrs. Reann Luckhardt of Ann Arbor and Rita Drouare of Grass Lake; seven great-grandchildren; and, one sister, Mrs. Lillian Pelarsky of Detroit.

Funeral services will be held Tuesday, April 21 at 2 p.m. at the Staffan Funeral Home. Interment will follow at Denton Cemetery, Van Buren township.

Iva Lucille Light

Former Chelsea Resident Dies at Area Nursing Home

Iva Lucille Light, formerly of Chelsea and Detroit, died Sunday, April 19 at the Stockbridge Convalescent Center. She was 81.

She was born June 19, 1899 in Franklin township, Lenawee county, the daughter of Ford and Maude DaFoe Fox.

She is survived by one niece, Mrs. Merle (Ruth) Leach of Chelsea and several cousins. She was preceded in death by one brother, Leon Fox in 1974.

There will be no visitation. A memorial service will be held Saturday, April 25 at 10:30 a.m. at the First Congregational church, Chelsea, with the Rev. Carl Schwarm officiating.

Arrangements were made by the Burghardt-Cole Chelsea Funeral Chapel.

Athletic Boosters

Discuss Fund Raisers

The Athletic Boosters Club met Wednesday, April 15. Present were Kay Poljan, Tom Dault, Arline Grau, Pat Robards, Elsie Heller, Art Steinaway, Loydell Keezer and Mike Sweet.

Discussions were held on the recent candy sales and the Millionaires Party.

The next regular meeting of the Chelsea Athletic Boosters Club will be held Wednesday, May 13.

Births

A son, Jason Kenneth, Wednesday, March 18, at St. Joseph Mercy Hospital, Ann Arbor, to Ken and Kelly Haight, 7590 Lamb Rd., Manchester.

A son, Jonathon Michael, Wednesday, April 1, at St. Joseph Mercy Hospital, Ann Arbor, to Joseph and Cynthia Ann Geer of Dexter. Maternal grandparents are Mildred Guyer of Colorado and Zell Zordell, also of Colorado. Paternal grandparents are Glen and Marion Geer of Dexter.

A son, Theodore Eugene Roberts II, Saturday, April 18, St. Joseph Mercy Hospital, Ann Arbor to Mr. and Mrs. David Roberts of Manchester. Maternal grandparents are Mr. and Mrs. A. J. Hale, Sr. of Chelsea. Paternal grandparents are Mr. and Mrs. Ted Roberts of Tecumseh, formerly of Manchester. Theodore has a brother, David Robert, age two.

A son, Jason Carl, Friday, April 17, St. Joseph Mercy Hospital, Ann Arbor, to Ronald and Marilyn Mast of Chelsea. Maternal grandparents are Norman and Betty Hinderer of Chelsea. Paternal grandparents are Robert and Selma Mast of Dexter. Jason has a sister, Michelle, four and one-half years old.

SCHOOL LUNCH MENU

Week of April 21-30

Tuesday, April 21—Oven fried chicken with gravy, dressing, buttered corn, bread and butter, chocolate eclairs, milk.

Wednesday, April 22—Homemade lasagna, broccoli, warm French bread with butter, chilled pear half, milk.

Thursday, April 23—Hot turkey sandwich with gravy, mixed vegetables, chilled peaches, peanut-raisin mix, milk.

Friday, April 24—Cheesy pizza, vegetable munchies, cinnamon applesauce, raisin oatmeal cookies.

Monday, April 27—Beef goulash, luncheon meat sandwich, diced carrots, fresh fruit, milk.

Tuesday, April 28—Cheese and sausage pizza, lettuce salad with dressing, chilled peaches, chocolate pudding, milk.

Wednesday, April 29—Sloppy Joe on a bun, tater tots, vegetable stix, cinnamon applesauce, milk.

Thursday, April 30—Garden vegetable soup with crackers, chef's salad topped with lettuce, ham and cheese, fruit and nut mix, bread and butter, milk.



EASTER GREETINGS: Bidding local children a fond hello and good-bye was the Easter Bunny himself as hordes of youngsters flocked on to the Chelsea High school athletic field Saturday, April 18 for the annual Jayce-sponsored Easter

Egg Hunt. More than 120 dozen eggs were scattered across the field and children, divided into age groups, scrambled with their baskets to collect the speckled prizes.

Panel Discussion

Set on Curriculum

Persons interested in having questions regarding school curriculum answered are encouraged to attend a panel discussion in the media center of Beach Middle school, Tuesday, April 28 at 8 p.m.

Modern Mothers Child Study Club is sponsoring the discussion. Panel members include Ray Van Meer, superintendent of schools; John Williams, Chelsea High school principal; Chris Dimanin, high school guidance counselor; Dan Snyder, school board trustee; June Winans, high school instructor; Anne Comeau, parent; and, Susie Riemenschneider and Tim Whitesall, students.

PUBLIC MEETING

Discussion of the Brown-Smith Tax Proposal to be voted on May 19, 1981. 23rd District Representative Mary Keith Ballantine will be present to explain and discuss the proposal.

WEDNESDAY, APRIL 22, 1981 - 8 p.m.

at Dexter Township Hall
6880 Dexter-Pinckney Rd.

DEXTER TOWNSHIP

William Eisenbeiser, Clerk

Roberta Kemp Granted EMU Scholarship

On Sunday, April 5, Mrs. Thomas (Roberta) Kemp of 851 Pierce Rd., was honored at a reception given in Hoyt Conference Center on the Eastern Michigan University campus in honor of those students in the health, physical education, recreation and dance departments who had high academic averages.

At this reception, Mrs. Kemp was awarded the Augusta Harris Scholarship in recognition of her scholarship and professional endeavors in the field of physical education.

Telephone your club news to 475-1371



You need both. Allstate homeowners insurance and mortgage protection life insurance.

Allstate's homeowners insurance will help to rebuild your house if an insured disaster strikes.

But, what if something happens to you? Who will pay off the mortgage? That's why you also need Allstate Life's mortgage protection life insurance. It helps pay off the mortgage if you die.

So your family will have help to live in a debt-free home. You need both kinds of insurance.

Allstate

You're in good hands.
Allstate Insurance Company,
Allstate Life Insurance Company,
Northbrook, Ill.
See or phone

JANET COOLEY

14000 McKinley Rd.
Chelsea
Ph. 475-9095

RESIDENTIAL CONSTRUCTION and REMODELING

Specializing in
CUSTOM-BUILT
ENERGY EFFICIENT HOMES

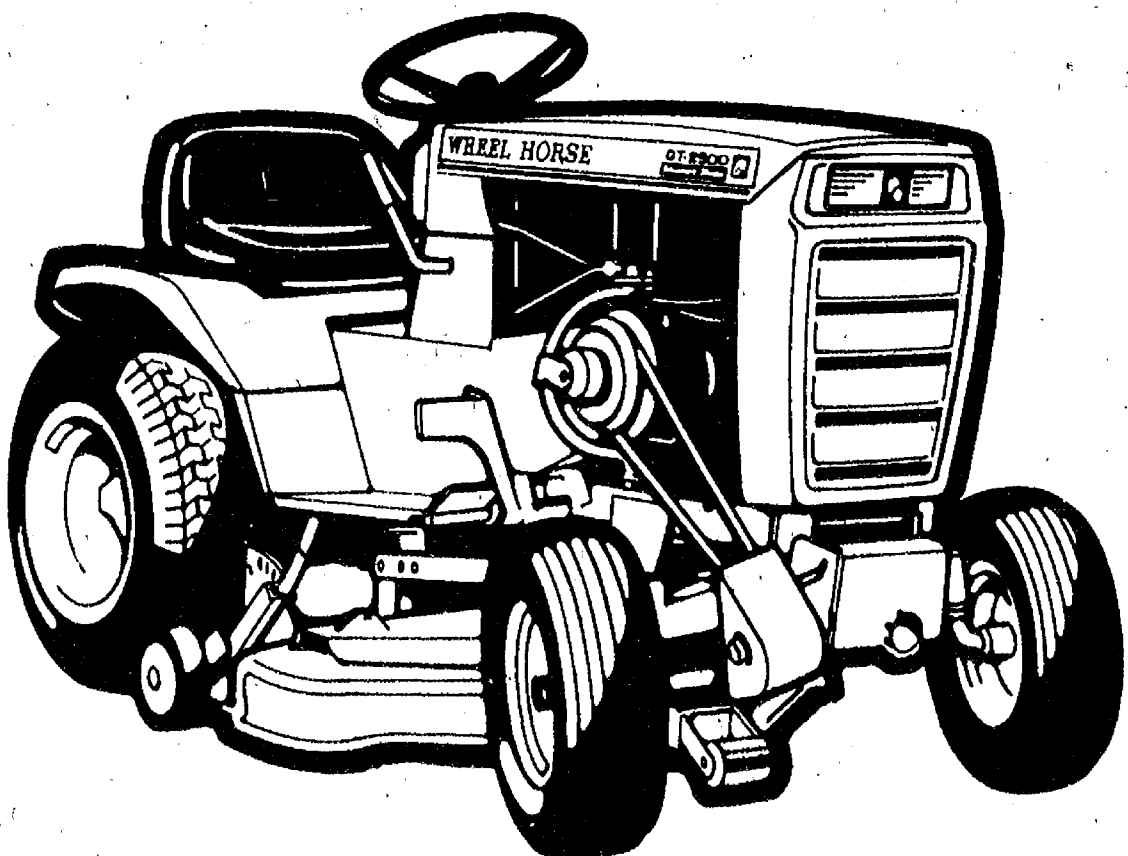
Free Estimates

ib V. Jensen & Sons

LICENSED BUILDERS
378 Spring Lake Dr., Chelsea
Ph. 475-1820

A Premium Tractor at a Popular Price.

The GT 2500 Silver Anniversary Commemorative Lawn and Garden Tractor.



Here's an opportunity you may never have again. A limited production edition of a quality lawn and garden tractor. At an amazingly low price.

It's the Wheel Horse GT 2500. And it's part of the Wheel Horse 25th Anniversary Celebration on now at participating dealers.

This specially designed tractor features all the quality engineering for which

Wheel Horse is famous. An 11 hp Briggs and Stratton Synchro-Balanced® engine. Eight-speed gear Uni-Drive® transaxle. And the patented Wheel Horse Tach-a-matic® hitch system.

See the attractive GT 2500 commemorative lawn and garden tractor now at your Wheel Horse dealer. It's an opportunity you won't want to miss.



Open Daily
8:30 to 5:30
Open Friday
TH 8:30

WHEEL HORSE SILVER ANNIVERSARY

Shake hands and get a GE factory rebate.

Get a cash rebate direct from General Electric when you buy selected appliances at retail from March 1 through April 30, 1981. (All models may not be available at all dealers.)

\$30 REBATE

The microwave that practically cooks by itself—the GE Countertop Microwave Oven.

With this GE Microwave Oven just a touch sets the correct cooking time and temperature, thanks to the new Automatic Cooking Control with humidity sensor (JE1130).

Original Price \$599.95
Rebate 30.00
Final Cost \$569.95

\$50 REBATE

The range that has many ways to cook many foods—the GE Grill/Griddle Range.

With its plug-in grill and griddle enclosure, this range can even barbecue indoors. And it has a full-size, self-cleaning oven (JSP47G).

Original Price \$799.95
Rebate 50.00
Final Cost \$749.95

\$20 REBATE

This GE Dryer that turns drying into a science.

This GE dryer has electronic sensor control so it shuts off when your clothes are ready and four drying selections so it's ready for just about any type of clothing (JDE6200V).

Original Price \$369.95
Rebate 20.00
Final Cost \$349.95

\$40 REBATE

Get two washers in one with this GE Washer.

With its exclusive Mini-Basket™ tub, this GE Washer lets you wash both small loads or large, depending on your needs. (WWA8350V).

\$30 REBATE

The dishwasher so thorough we call it the Potscrubber.

This Potscrubber™ Dishwasher gets most pots and pans with baked-on food sparkling clean. And the PermaJet™ tub and door liner are so tough they have a full ten-year written warranty against cracking, chipping, peeling, or rusting. (Ask us for details.) (GSD1900).

Original Price \$519.95
Rebate 30.00
Final Cost \$489.95

GE brings good things to life.

HEYDLAUFF'S

113 N. Main St., Chelsea

Ph. 475-1221